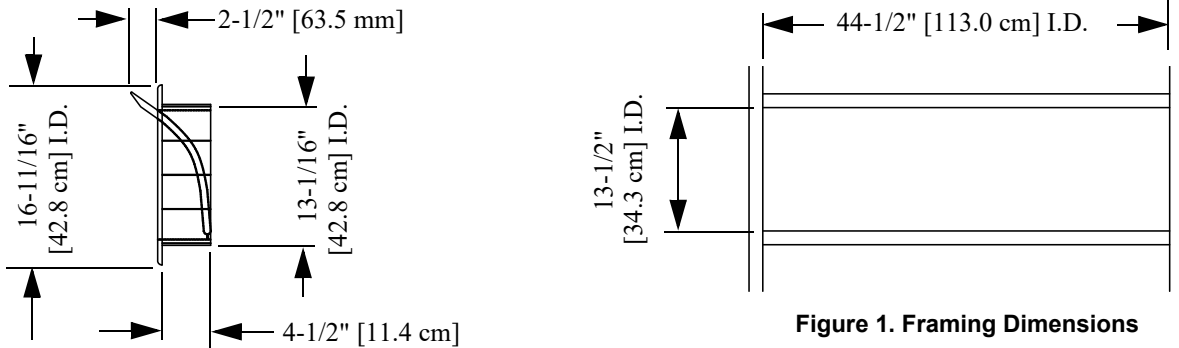




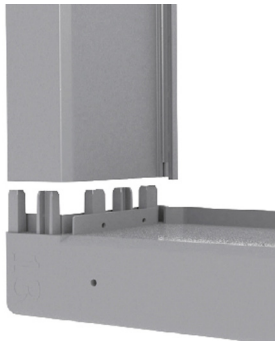
Directional Curved Sidewall Air Inlet (PN 53533-5)

Airflow Capacity: 3474 cfm @ .10 inch S.P.

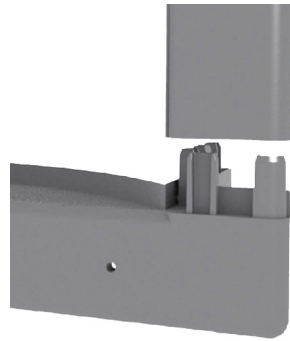
Framed Opening



Assembly



Step 1. Install frame Profile with Brush Seal on to side Endcap.



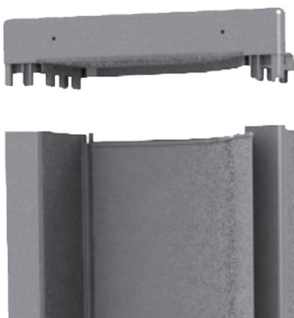
Step 2. Install long frame section with hinge profile onto Side Endcap



Step 3. Slide Plastic Hinge on to Inlet Hinge Profile.



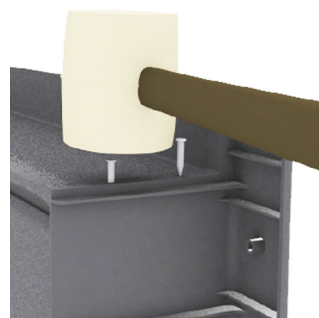
Step 4. Slide Curved Louver Blade on to Plastic Hinge Profile



Step 5. Install the other Side Endcap.

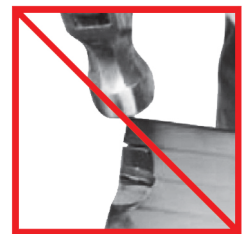


Step 6. Use a Rubber Mallet to Secure the Endcaps in place.



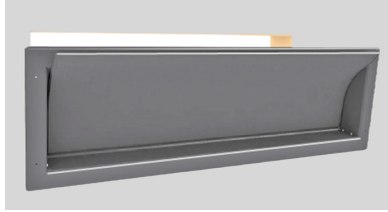
Step 7. Use a Rubber Mallet to install eight Plastic Nails.

WARNING



Use of a Metal Hammer can result in damage to Inlet Housing!

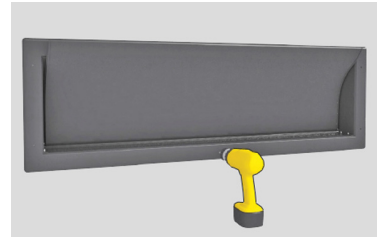
Installation



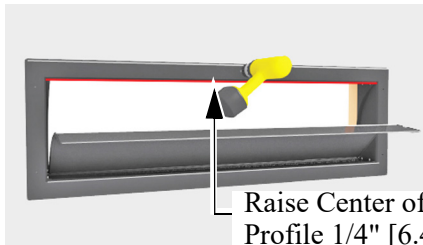
Step 1. Install the Inlet into the framed opening.



Step 2. With the Inlet in place, fasten the Endcaps securely using four 2-Inch Screws.



Step 3. Fasten the Profile with one Screw in the Center. Be sure it is straight across bottom.



Raise Center of Profile 1/4" [6.4 mm]

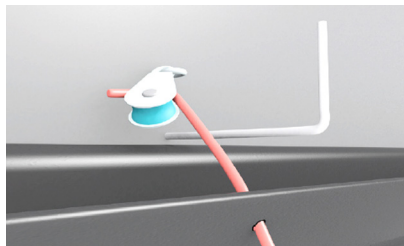
Step 4. Push slightly up on Center of Profile approximately 1/4" [6.4 mm]. Once in place, fasten to the wall. Make sure Louver opens and shuts easily without binding.



Step 5. Install Shut-Off just above the Inlet Flange at the Center. Avoid the Pulling Cable.



Step 6. Install a Winch Block or Pulley at the top of the Inlet.



Step 7. Pull String through hole in Louver, then through block or Pulley towards direction of pull.



Step 8. Caulk all four sides of Inlet after installation for improved Inlet Performance

Note: After Actuator is installed, re-adjust all Inlets to make sure they shut properly.

WARNINGS
Please read before installing



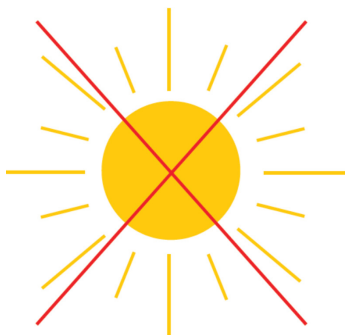
Do Not overtighten Screws! Tighten until flush. **Do Not** dent Housing.



DirectAire Shut-Off Installation (Placed at top and center of Inlet)

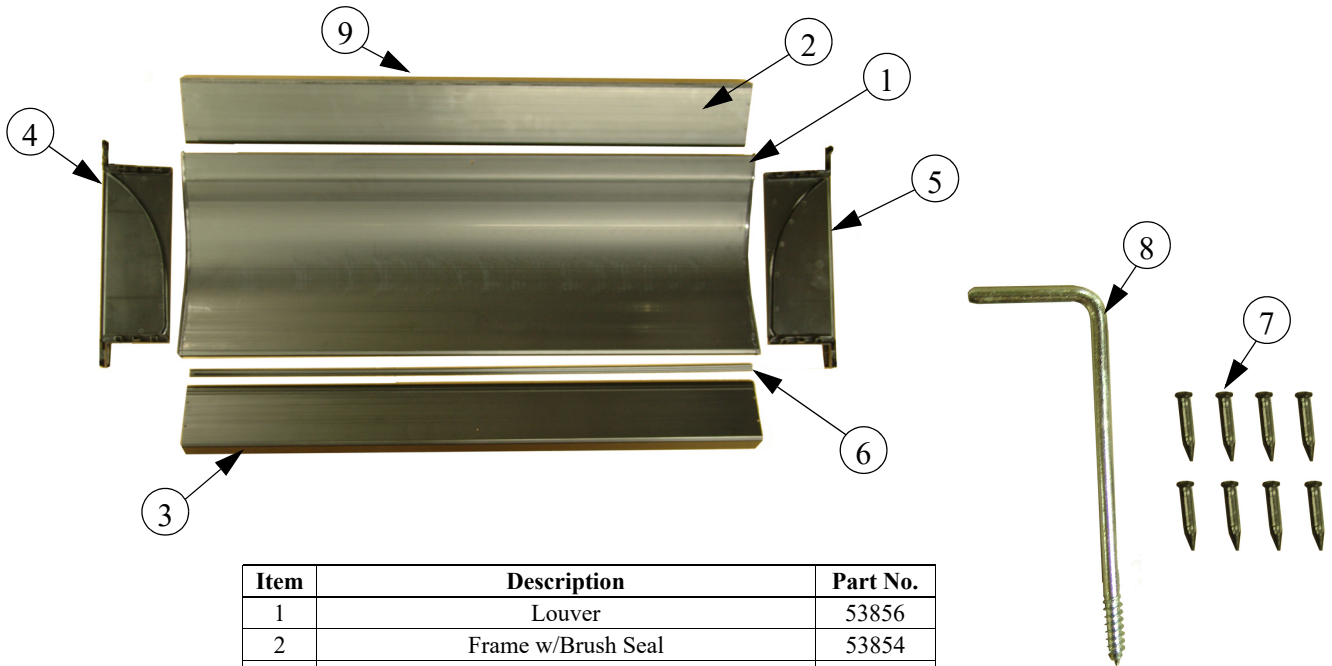


A Wind Deflector must be installed to protect from direct sunlight. The Deflector opening(s) must be equal or larger than the Inlet opening.



Important: Do Not Store in Direct Sunlight!

Part Numbers



Item	Description	Part No.
1	Louver	53856
2	Frame w/Brush Seal	53854
3	Frame w/Hinge	53857
4	Left Hand End Cap Frame	53853
5	Right Hand End Cap Frame	53852
6	Hinge	53859
7*	Plastic Nails	53855
8	L-Screw Hook	51511
9**	Brush Seal	54792
* Qty 40 Nails (8 per Inlet)		
**Qty 18' [5.49m] (3.6' [1.1m] per Inlet)		



MADE TO WORK.

BUILT TO LAST.®

Revisions to this Manual

Page No.	Description of Change	ECO
3	Changed 53855 to 53859	35198

Contact your nearby Chore-Time distributor or representative for additional parts and information.

CTB, Inc.
PO Box 2000
Milford, Indiana 46542-2000 USA
Phone (574) 658-4101 Fax (877) 730-8825
Email: choretime@choretime.com
Internet: www.choretime.com