



Chore-Tronics® Mobile Server Installation & Operator's Instruction Manual



For additional parts and information, contact your nearest Chore-Time distributor or representative.
Find your nearest distributor at: www.choretime.com/contacts

Limited Warranty

LIMITED WARRANTY

Chore-Time Group, a division of CTB, Inc. (“Chore-Time”) warrants the new CHORE-TRONICS® Mobile Server manufactured by Chore-Time to be free from defects in material or workmanship under normal usage and conditions, for One (1) year from the date of installation by the original purchaser (“Warranty”). Chore-Time provides for an extension of the aforementioned Warranty period (“Extended Warranty Period”) with respect to certain Product parts. If such a defect is determined by Chore-Time to exist within the applicable period, Chore-Time will, at its option, (a) repair the Product or Component Part free of charge, F.O.B. the factory of manufacture or (b) replace the Product or Component Part free of charge, F.O.B. the factory of manufacture. This Warranty is not transferable, and applies only to the original purchaser of the Product.

CONDITIONS AND LIMITATIONS

THIS WARRANTY CONSTITUTES CHORE-TIME’S ENTIRE AND SOLE WARRANTY AND CHORE-TIME EXPRESSLY DISCLAIMS ANY AND ALL OTHER WARRANTIES, INCLUDING, BUT NOT LIMITED TO, EXPRESS AND IMPLIED WARRANTIES, INCLUDING, WITHOUT LIMITATION, WARRANTIES AS TO MERCHANTABILITY OR FITNESS FOR PARTICULAR PURPOSES. CHORE-TIME shall not be liable for any direct, indirect, incidental, consequential or special damages which any purchaser may suffer or claim to suffer as a result of any defect in the Product. Consequential or Special Damages as used herein include, but are not limited to, lost or damaged products or goods, costs of transportation, lost sales, lost orders, lost income, increased overhead, labor and incidental costs, and operational inefficiencies. *Some jurisdictions prohibit limitations on implied warranties and/or the exclusion or limitation of such damages, so these limitations and exclusions may not apply to you. This warranty gives the original purchaser specific legal rights. You may also have other rights based upon your specific jurisdiction.*

Compliance with federal, state and local rules which apply to the location, installation and use of the Product are the responsibility of the original purchaser, and CHORE-TIME shall not be liable for any damages which may result from non-compliance with such rules.

The following circumstances shall render this Warranty void:

- Modifications made to the Product not specifically delineated in the Product manual.
- Product not installed and/or operated in accordance with the instructions published by the CHORE-TIME.
- All components of the Product are not original equipment supplied by CHORE-TIME.
- Product was not purchased from and/or installed by a CHORE-TIME authorized distributor or certified representative.
- Product experienced malfunction or failure resulting from misuse, abuse, mismanagement, negligence, alteration, accident, or lack of proper maintenance, or from lightning strikes, electrical power surges or interruption of electricity.
- Product experienced corrosion, material deterioration and/or equipment malfunction caused by or consistent with the application of chemicals, minerals, sediments or other foreign elements.
- Product was used for any purpose other than for the care of poultry and livestock.
-

The Warranty and Extended Warranty may only be modified in writing by an officer of CHORE-TIME. CHORE-TIME shall have no obligation or responsibility for any representations or warranties made by or on behalf of any distributor, dealer, agent or certified representative.

Effective: April 2014

Contents

Topic	Page
Safety and General Information	3
Follow Safety Instructions	3
Decal Descriptions	3
DANGER: Moving Parts	3
DANGER: Electrical Hazard	3
General Information	4
Specifications	4
Setup	5
Registering a new Mobile Account	5
How to setup the Mobile server, Routers and Mobile App	6
Connecting to the Mobile Server Web interface and how to add CT3 controls	8
Testing the connection to the Mobile App to the Server	9
Registering the Mobile server with a Smart phone	10
Adding the Chore-Tronics® 3 (CT3) Controls	11
Navigation from Screen to Screen	11
Wiring	12
Wireless Radios (CT3 and other Chore-Tronics Controls) Wiring	12
Ethernet Cat 5e-6 (CT3 and other Chore-Tronics Controls) Wiring	13
Parts Listing	14

Safety and General Information

Caution, Warning and Danger Decals have been placed on the equipment to warn of potentially dangerous situations. Care should be taken to keep this information intact and easy to read at all times. Replace missing or damaged safety decals immediately.

Safety–Alert Symbol



This is a safety–alert symbol. When you see this symbol on your equipment, be alert to the potential for personal injury. This equipment is designed to be installed and operated as safely as possible...however, hazards do exist.

Understanding Signal Words

Signal words are used in conjunction with the safety–alert symbol to identify the severity of the warning.



DANGER indicates an imminently hazardous situation which, if not avoided, **WILL** result in death or serious injury.



WARNING indicates a potentially hazardous situation which, if not avoided, **COULD** result in death or serious injury.



CAUTION indicates a hazardous situation which, if not avoided, **MAY** result in minor or moderate injury.

Follow Safety Instructions

Carefully read all safety messages in this manual and on your equipment safety signs. Follow recommended precautions and safe operating practices.

Keep safety signs in good condition. Replace missing or damaged safety signs.

Decal Descriptions

DANGER: Electrical Hazard

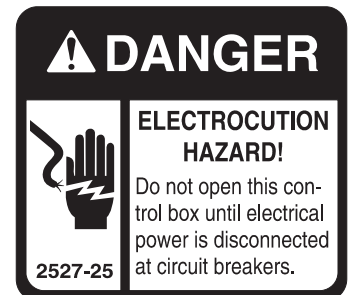
Disconnect electrical power before inspecting or servicing equipment unless maintenance instructions specifically state otherwise.

Ground all electrical equipment for safety.

All electrical wiring must be done by a qualified electrician in accordance with local and national electric codes.

Ground all non-current carrying metal parts to guard against electrical shock.

Electrical disconnects and over current protection are not supplied with the equipment.



General Information

The Chore-Time Chore-Tronics® **Mobile Server** is designed to connect a mobile device to a Chore-Tronics® Control to allow access to current conditions, and also allow changes to be made to control settings from a remote location. Using the equipment for purposes other than specified in this manual may cause personal injury and/or damage to the equipment.

Specifications

Supply Voltage: 85-264 Vac 50-60hz

1 Standard Ethernet Port

1 Standard USB Port

Mounting Instructions

If mounting to a wall, use screws (not included) in the mounting holes in the back of the Plastic Box.

Note: Make sure to mount close to a power source and leave room for the USB and Ethernet cables to be plugged in.

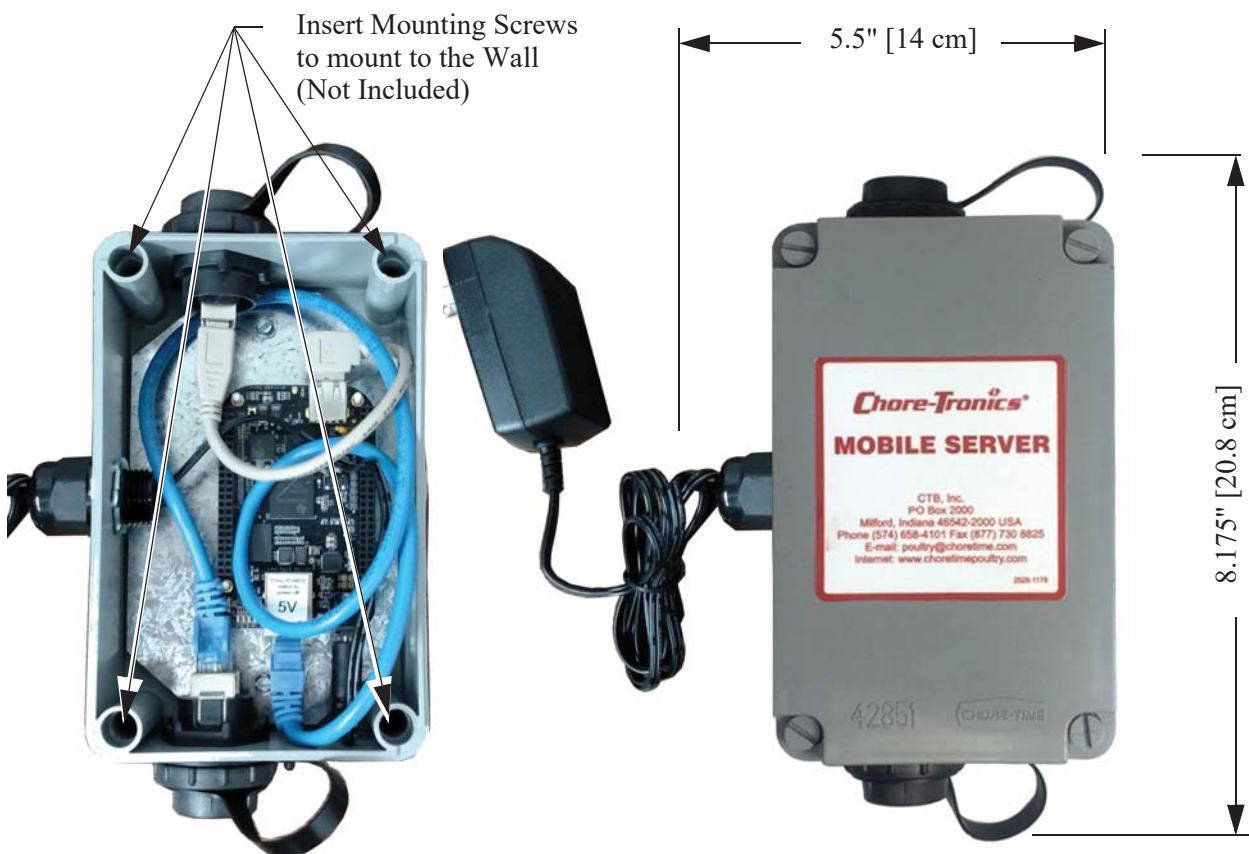


Figure 1. Mounting

Setup

Registering a new Mobile Account

Before starting, users should have an active email address, username, password, and desired name. Additionally, the user should have on hand the GUID associated with the mobile server. Refer to **Figure 13. on page 10.**

Note: Username must have 8 characters. The password must have 8 and at least 1 must be capital letter.

1. Enter this link in your web browser. <https://authenticationserverapp.azurewebsites.net/Account/Login>
2. Click on **Register as a new user?**

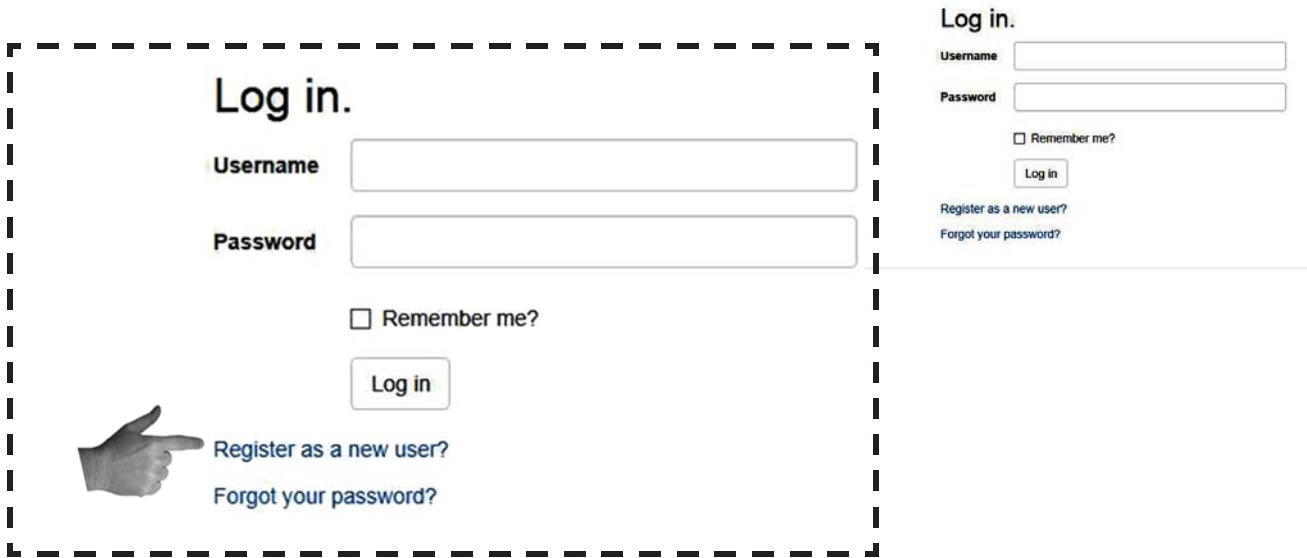
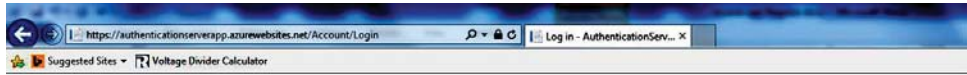


Figure 2. User Name

3. Enter your account information.

The Mobile server serial number or GUID is located inside the Mobile Server enclosure.

4. Click on Verify GUID. A green check will appear if correct.

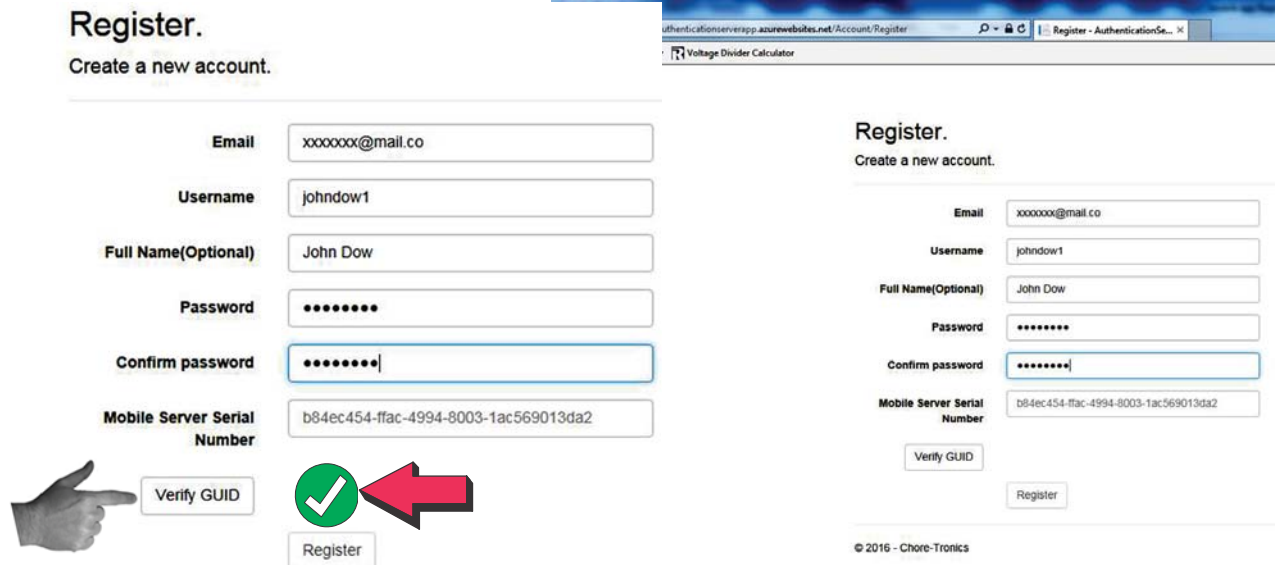


Figure 3. Mobile Server Serial Number

5. You will be redirected to the Manage your Account screen.

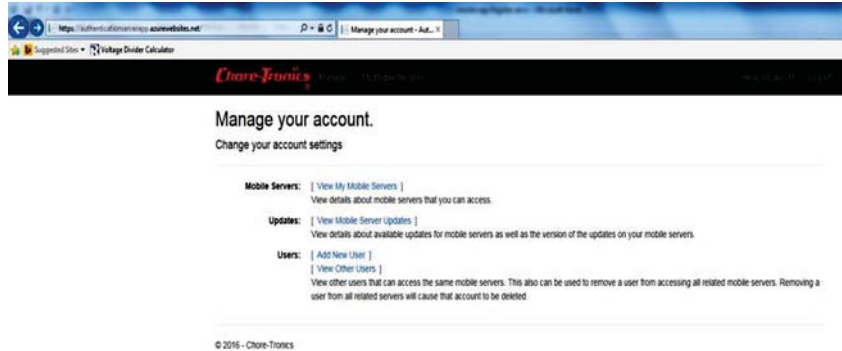


Figure 4. Manage your Account Screen

How to setup the Mobile server, Routers and Mobile App.

All equipment in the network must be connected before scanning for the IP.

1. Download the App from the link and run.

<https://ctbftp.ctbinc.com/?u=3YYhxtLVoh&p=8jYo4r8QPl&path=/ipscan-3.5.1-setup%20%281%29.exe>

2. Open the App and follow the Setup as shown.

3. Select the Icon to the right of the Start Button to select the items you wish to display.

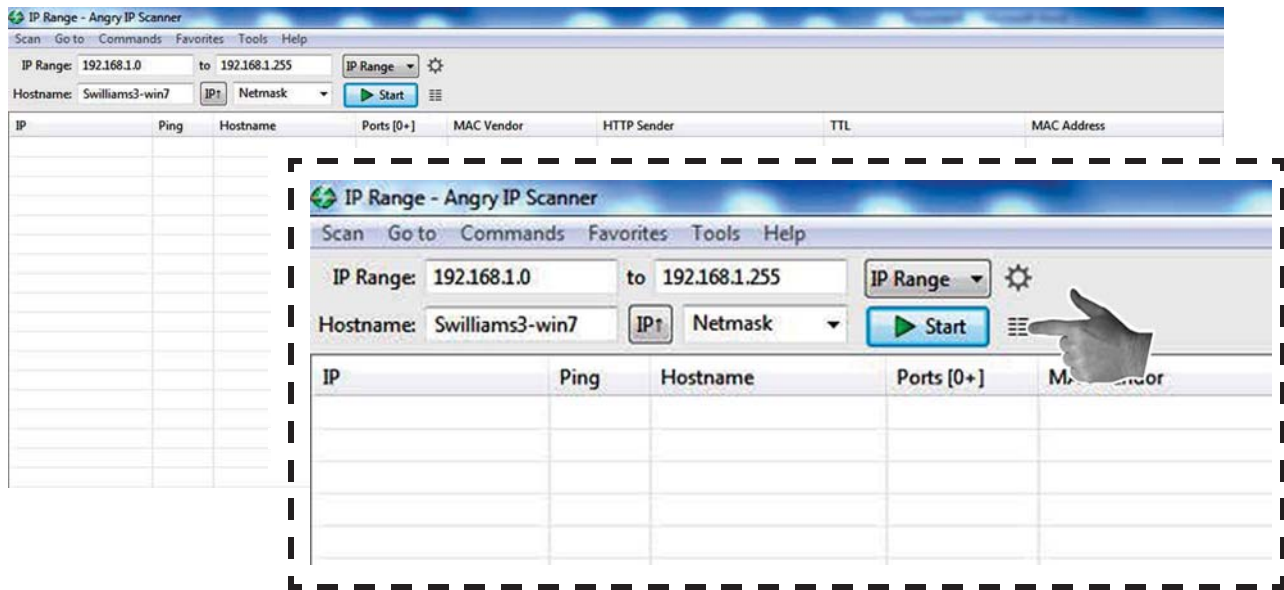


Figure 5. Setting up Display

4. Select the items on the right and use the arrow button to move them to the left selection box. Then click OK.

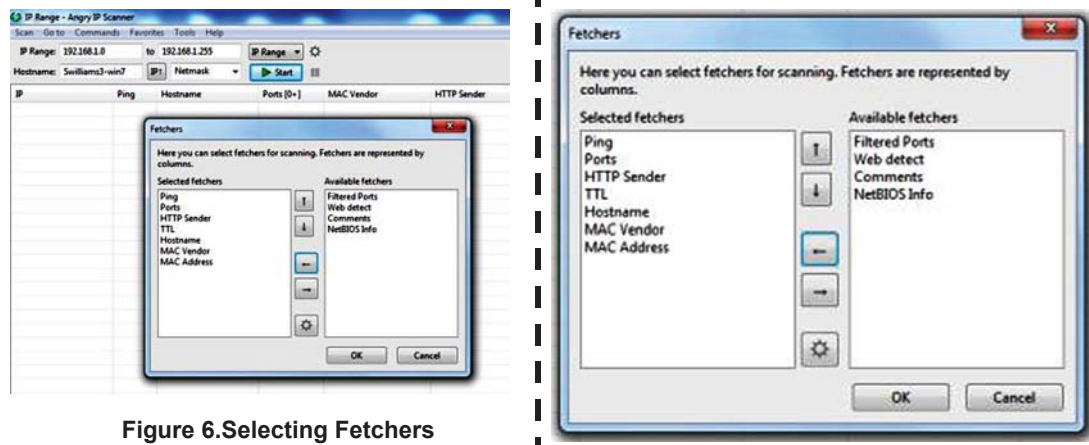


Figure 6. Selecting Fetchers

5. Connect your PC to the local Router by Ethernet or WIFI.
6. The IP range should auto fill. Select **Start** to start IP scan.

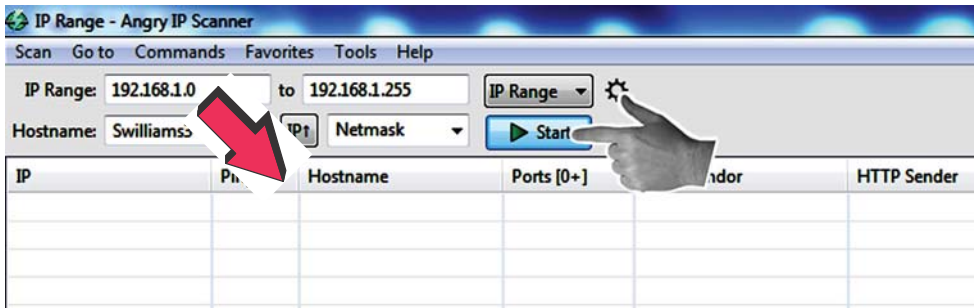


Figure 7. IP Auto fill

7. Select **Close**. Then select **Hostname** to re-order the IP list.

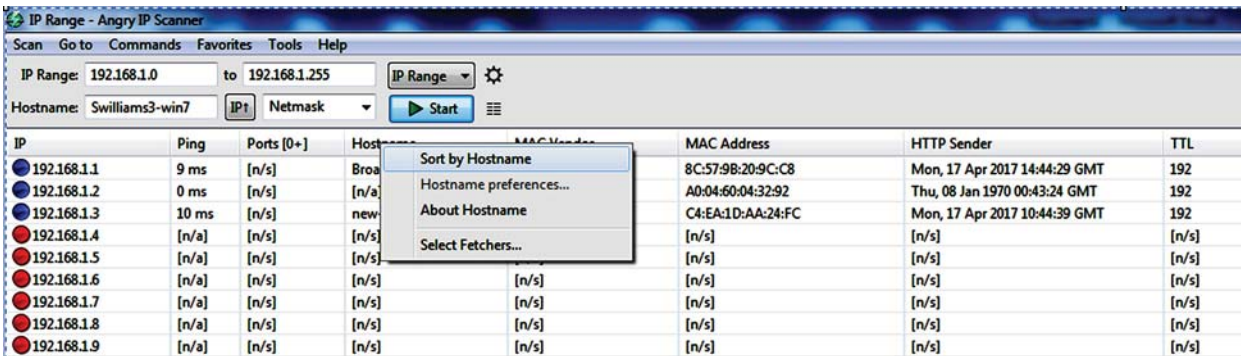
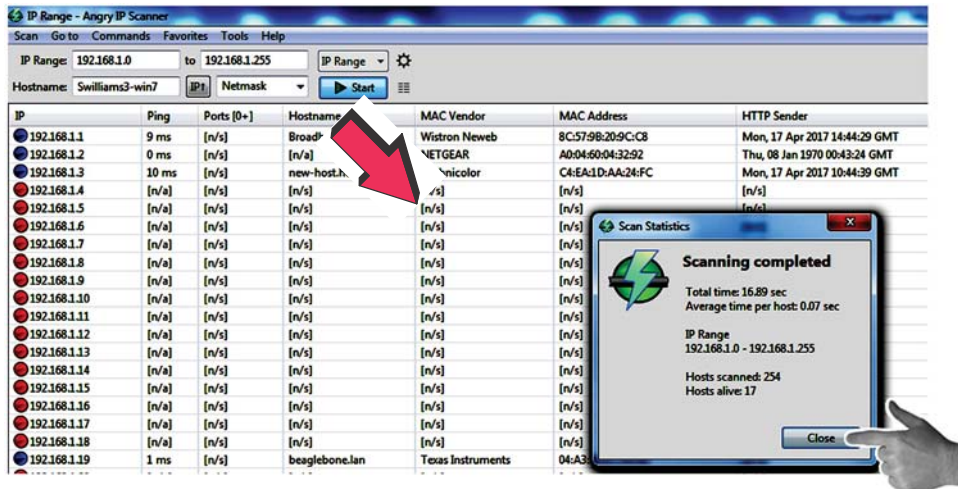


Figure 8. Re-order the IP list

8. The Mobile Server IP will be displayed in the list. Beaglebone Texas Instruments.

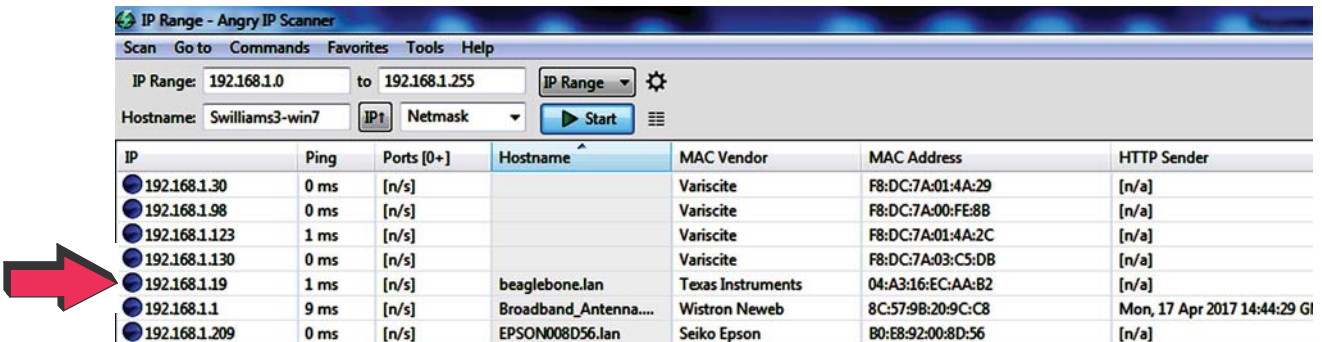


Figure 9. IP Address

Connecting to the Mobile Server Web interface and how to add CT3 controls

1. Connect your PC or smart phone to the local router via Ethernet or WIFI.
2. Enter the IP of the Mobile Server Web interface into your internet browser. xxx.xxx.xxx.xxx:8080

Example IP Address: 192.168.002.019:8080



Search Google or type URL

Figure 10. Connecting to the Mobile Server Web Interface

The Web interface should open.

3. Scroll down to the Houses area. In this example two Houses have already been added. To add the next house go to the Add House and enter the IP address of the CT3 and House number. Then Select Submit.

Chore-Tronics Mobile Server Support

Disabled 5 Sec. 10 Sec. 30 Sec. 1 Min. 5 Min.

System Information

Mobile Server Version	2.0.0.1061
Internet Connection Status	Connected
Internal IP Address	192.168.1.19
External IP Address	72.106.106.118
Automatic Port Forwarding	Automatic
Port	10034
Mobile Server Status	Running
Used Disk Space	2087 MB / 3523 MB (59.2%)
Total CPU Utilization	17.3%
Process CPU Utilization	16%
Process Memory Usage	181.45 MB
Last Internal IP Change Time	4/13/2017 9:08:08 AM
Last External IP Change Time	4/13/2017 9:08:05 AM
External IP Server Update Time	4/13/2017 9:08:44 AM
Last Webpage Update Time	4/17/2017 12:45:38 PM

Local IP Address(es)

Interface	Speed	IP Address	MAC Address	Edit
lo	1 Mbps	127.0.0.1		
eth0	1 Mbps	192.168.1.19	04A316ECAAB2	
usb0	1 Mbps	192.168.7.2	04A316ECAAB4	
can0	1 Mbps			
can1	1 Mbps			

Houses

House Name	IP Address	State	Delete
House 1	192.168.1.30	Connected	
House 2	192.168.1.130	Connected	

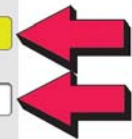
Add House

IP Address
192.168.1.123

House Number
3

House Type
CT3

Submit



House 3 has now been added

Houses

House Name	IP Address	State	Delete
House 1	192.168.1.30	Connected	
House 2	192.168.1.130	Connected	
House 3	192.168.1.123	Connected	

Add House

IP Address

House Number

House Type
CT3

Submit

Figure 11. Adding a House

4. Check to see if the Mobile Server is connected to the Internet.



Figure 12. Check Connection

Testing the connection to the Mobile App to the Server.

1. Open the Mobile App on a mobile device and enter your user name and password. Select Login.

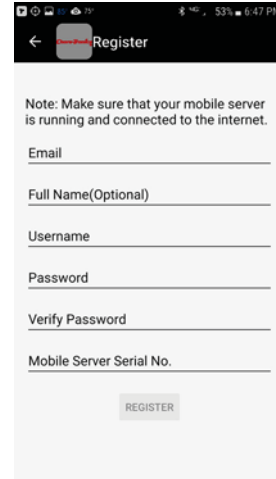
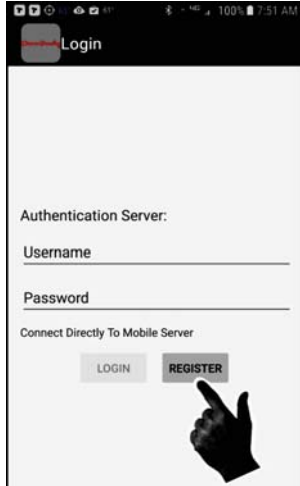
Note: The mobile server/account must be registered with the authentication server by selecting the Register button or by going to the following address:
<https://authenticationserverapp.azurewebsites.net/Account/Login>



Figure 13. User Name/Password Mobile Server

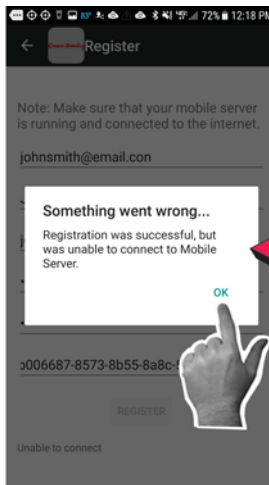
Registering the Mobile server with a Smart phone

1. All equipment in the network must be connected and the Chore-Tronic's® Mobile app must be installed on your mobile device. Navigate to the Apple app store or Google play store to download the Chore-Tronic's Mobile app.
2. The mobile server must be connected to the Internet.
3. Open the Mobile app on your phone.
4. Select the "Register" button.



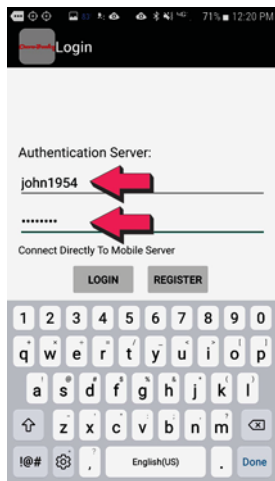
5. Enter the information needed. Select "Register".

Note: Username must have at least 8 characters, Password must have at least 8 characters with one capital, The Mobile Server Serial number is the GUID.



If you get this popup, select OK. Close the Mobile App and re-open.

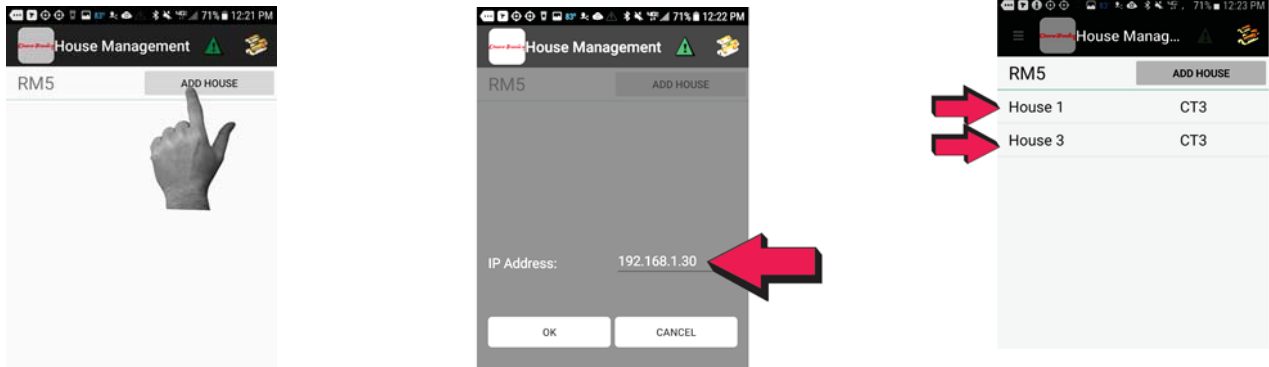
6. Open the Mobile app and enter your Username and Password. Select "Login".



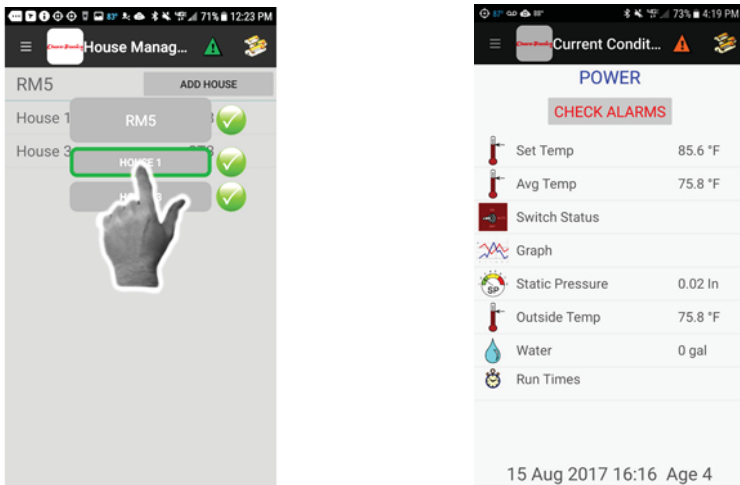
Adding the Chore-Tronics® 3 (CT3) Controls

1. After the site opens select "Add House". Enter the IP of the first House you want listed. Continue to add your houses until all are added. This example shows 2 added houses. House 1 and House 2.

Note: The house name comes from the CT3 control.



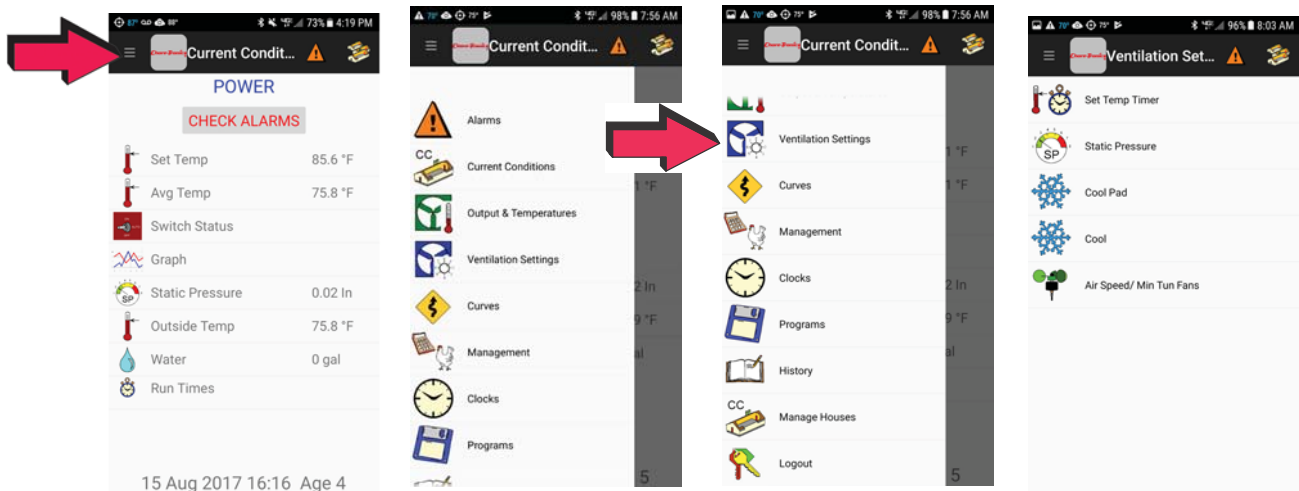
1. Select the House icon in the upper right corner to view a list of all houses. Select the house you want to view.



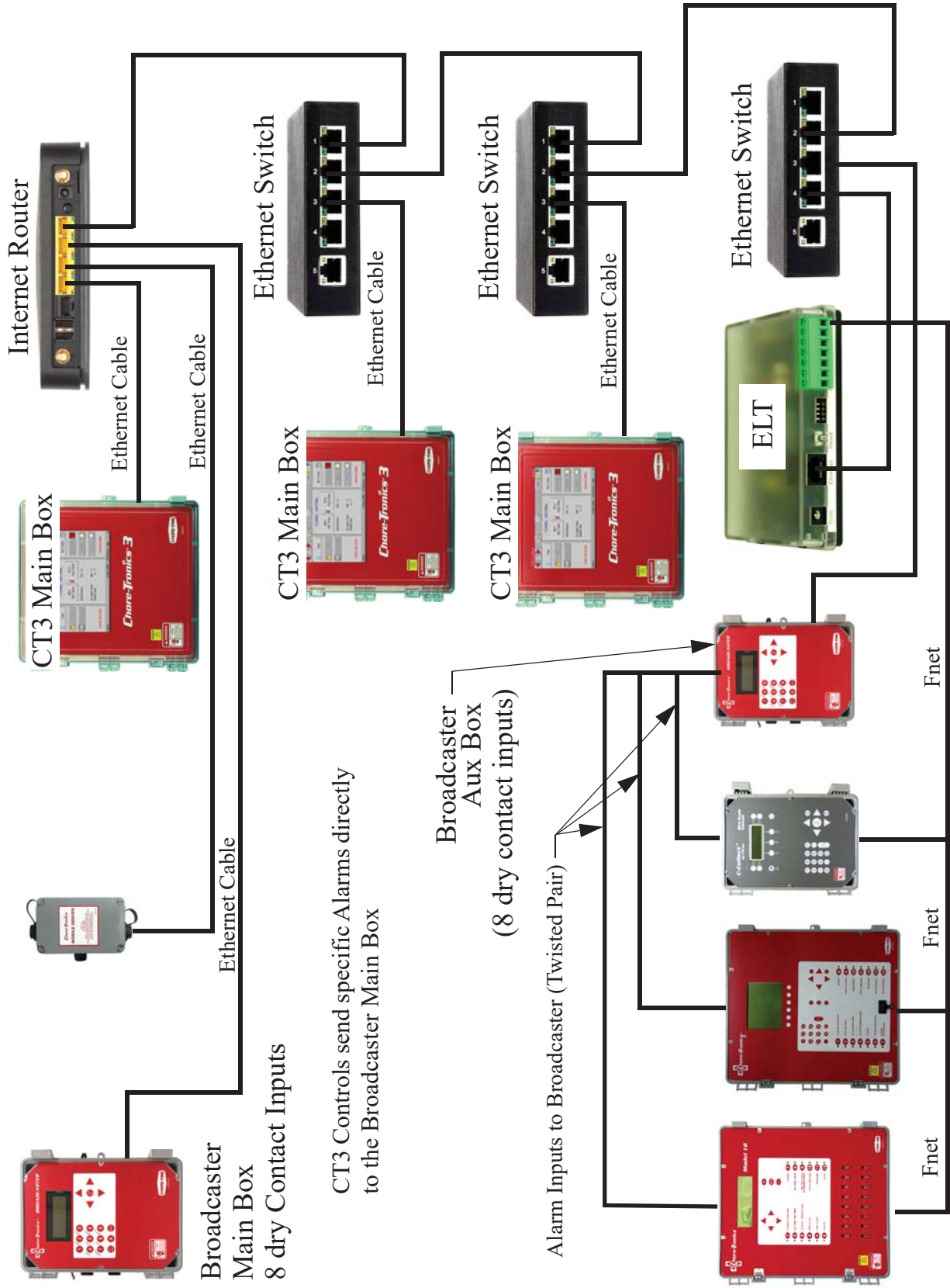
Navigation from Screen to Screen

1. Select the Menu Icon  in the upper left to view the Screen navigation menu.

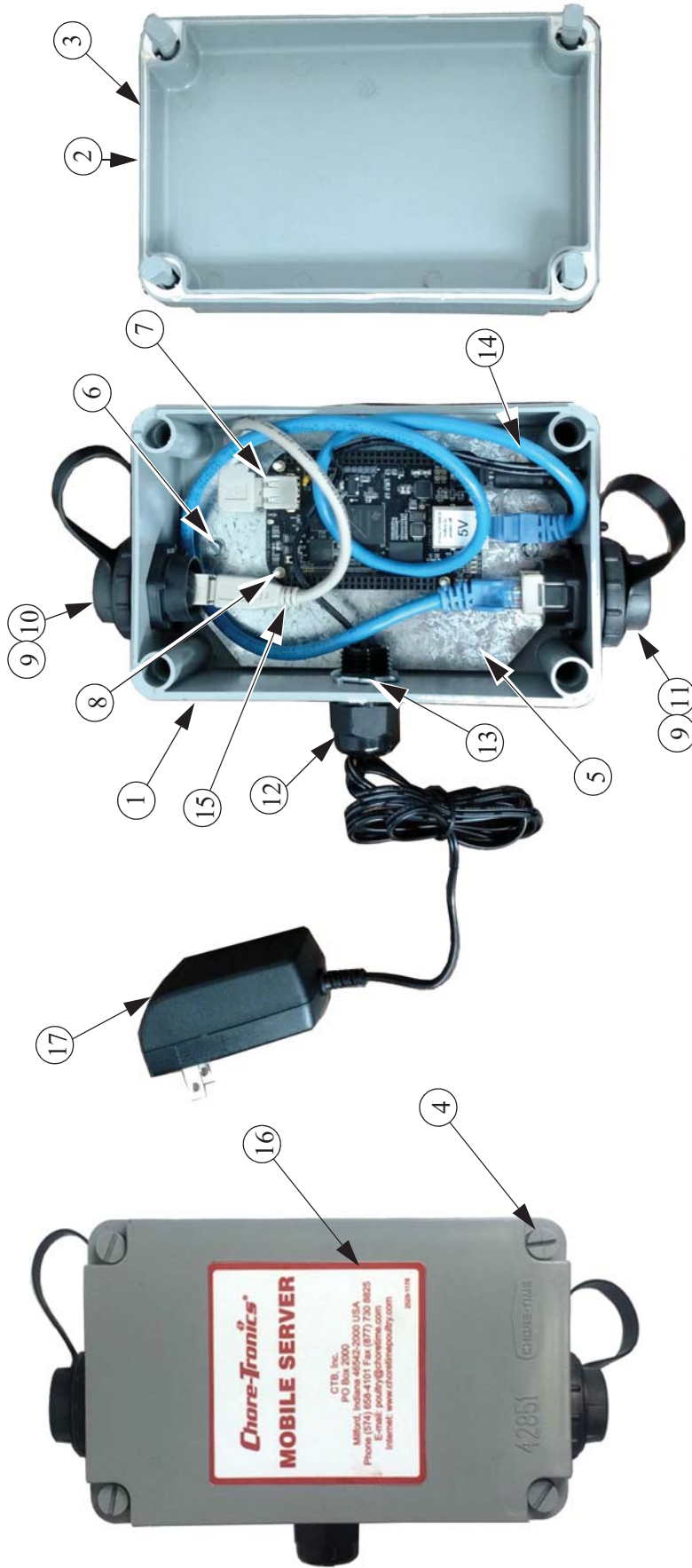
Note: Logout after done and close the app.



Ethernet Cat 5e-6 (CT3 and other Chore-Tronics Controls) Wiring



Parts Listing



Item	Part No	Description
10	51852	USB CT3 External Port Cap
11	55397	Ethernet External Port
12	23779	Liquid Tight 1/2" Connector
13	3357	1/2" Conduit Lock Nut
14	54364	24" Ethernet Cable
15	56216	Chore-Tronics Mobile Server USB Cable
16	2529-1178	Mobile Server Decal
17	51297	5V Power Supply

Item	Part No	Description
1	42853-5	Mobile Server Box
2	42851	Short 4 x 6 Box Lid
3	42854	Gasket
4	42849	Short Screw
5	56074	Mobil Server Plate
6	13019	#8 x .375 Screw
7	56073PR	Mobile Server Board
8	56243	.5" Lock in Place Standoff
9	51873	USB CT3 External Port



MADE TO WORK.

BUILT TO LAST.®

Revisions to this Manual

Page No.	Description of Change	ECO
15	Changed 56073 to 56073PR	33235

**For additional parts and information, contact your nearest Chore-Time distributor or representative.
Find your nearest distributor at: www.choretime.com/contacts**

Chore-Time Group, A division of CTB, Inc.
PO Box 2000
Milford, Indiana 46542-2000 USA
Phone (574) 658-4101 Fax (877) 730-8825
Email: choretime@choretime.com
Internet: www.choretime.com