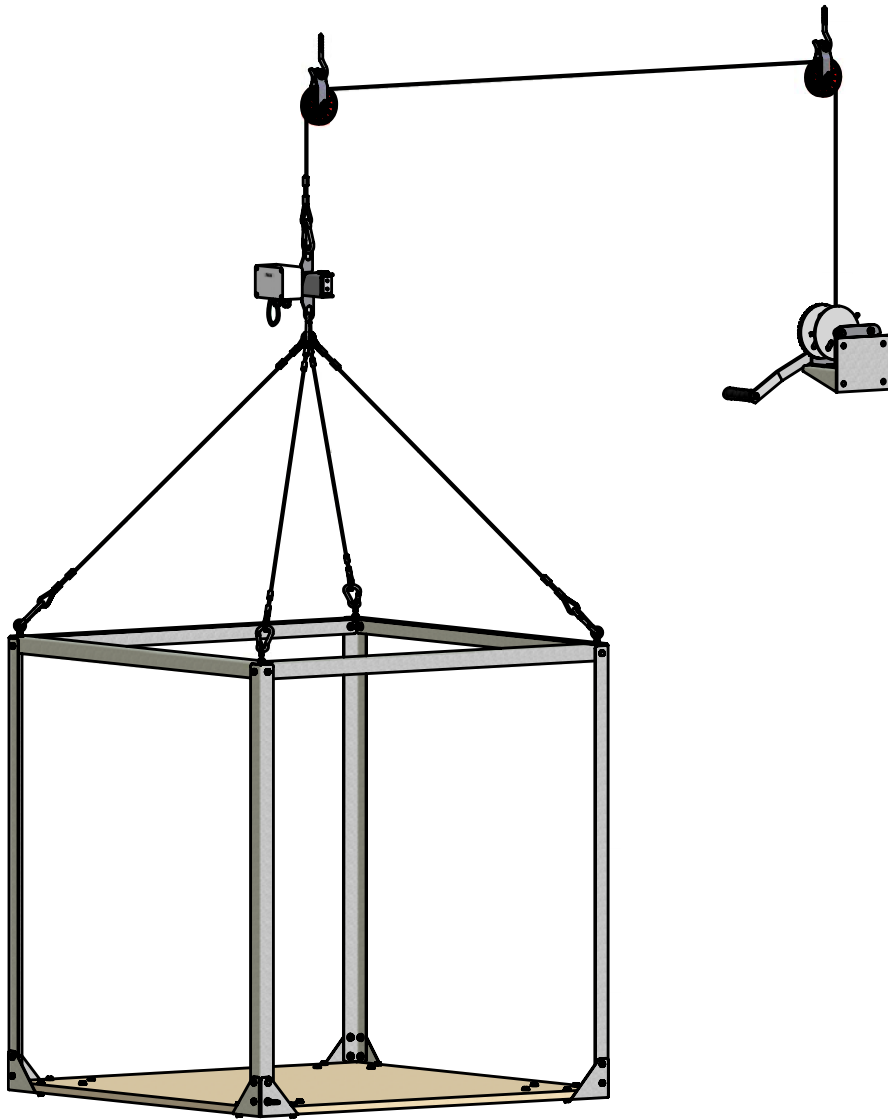


C-Collect[®]
by CTB Inc.

Turkey Scale
Assembly Instruction Manual



CTB Inc. Warranty

CTB Inc. warrants each new C-Collect[®] product manufactured by it to be free from defects in material or workmanship for one year from and after the date of initial installation by or for the original purchaser. If such a defect is found by the Manufacturer to exist within the one-year period, the Manufacturer will, at its option, (a) repair or replace such product free of charge, F.O.B. the factory of manufacture, or (b) refund to the original purchaser the original purchase price, in lieu of such repair or replacement. Labor costs associated with the replacement or repair of the product are not covered by the Manufacturer.

Conditions and Limitations

1. The product must be installed by and operated in accordance with the instructions published by the **Manufacturer or Warranty will be void.**
2. Warranty is void if **all components** of the system are not original equipment supplied by the **Manufacturer.**
3. This product must be purchased from and installed by an authorized distributor or certified representative thereof or the Warranty will be void.
4. Malfunctions or failure resulting from misuse, abuse, negligence, alteration, accident, or lack of proper maintenance shall not be considered defects under the Warranty.
5. This Warranty applies only to systems for the care of poultry and livestock. Other applications in industry or commerce are not covered by this Warranty.

The **Manufacturer** shall not be liable for any **Consequential or Special Damage** which any purchaser may suffer or claim to suffer as a result of any defect in the product. **“Consequential”** or **“Special Damages”** as used herein include, but are not limited to, lost or damaged products or goods, costs of transportation, lost sales, lost orders, lost income, increased overhead, labor and incidental costs and operational inefficiencies.

THIS WARRANTY CONSTITUTES THE MANUFACTURER'S ENTIRE AND SOLE WARRANTY AND THIS MANUFACTURER EXPRESSLY DISCLAIMS ANY AND ALL OTHER WARRANTIES, INCLUDING, BUT NOT LIMITED TO, EXPRESS AND IMPLIED WARRANTIES AS TO MERCHANTABILITY, FITNESS FOR PARTICULAR PURPOSES SOLD AND DESCRIPTION OR QUALITY OF THE PRODUCT FURNISHED HEREUNDER.

C-Collect[®] Distributors are not authorized to modify or extend the terms and conditions of this Warranty in any manner or to offer or grant any other warranties for C-Collect[®] products in addition to those terms expressly stated above. An officer of CTB, Inc. must authorize any exceptions to this Warranty in writing. The Manufacturer reserves the right to change models and specifications at any time without notice or obligation to improve previous models.

Effective: **July 2005**

CTB Inc.
P.O. Box 2000 • Milford, Indiana 46542-2000 • U.S.A.
Phone (574) 658-4101 • Fax (877) 730-8825
Email: ctb@ctbinc.com • Internet: <http://www.ctbinc.com>

Thank You

The employees of CTB Inc. would like to thank your for your recent C-Collect[®] purchase. If a problem should arise, your C-Collect[®] distributor can supply the necessary information to help you.

General

Support Information

The C-Collect® Turkey Scale is to be used along with a C-Collect® Bird Scale Control to provide the user with Turkey weight in a house at any time during Flock Growth. Using this equipment for any other purpose or in a way not within the operating recommendations specified in this manual will void the warranty and may cause personal injury. This manual is designed to provide comprehensive planning, installation, safety, operation, and parts listing information. The Table of Contents provides a convenient overview of the information in this manual. The Table of Contents also specifies which pages contain information for the sales personnel, installer, and consumer (end user).

Safety Information

Caution, Warning and Danger Decals have been placed on the equipment to warn of potentially dangerous situations. Care should be taken to keep this information intact and easy to read at all times. Replace missing or damaged safety decals immediately.

Using the equipment for purposes other than specified in this manual may cause personal injury and/or damage to the equipment.

Follow Safety Instructions

Carefully read all safety messages in this manual and on your equipment safety signs. Follow recommended precautions and safe operating practices.

Keep safety signs in good condition. Replace missing or damaged safety signs.

Decal Descriptions

DANGER: Electrical Hazard



Disconnect electrical power before inspecting or servicing equipment unless maintenance instructions specifically state otherwise.

Ground all electrical equipment for safety.

All electrical wiring must be done by a qualified electrician in accordance with local and national electric codes.

Ground all non-current carrying metal parts to guard against electrical shock.

With the exception of motor overload protection, electrical disconnects and over current protection are not supplied with the equipment.

Turkey Scale Location

The scales can only be mounted a maximum of 120 feet from the Bird Scale Control. If you have to exceed this distance then an SJB (signal amplifier) must be used. See the wiring diagrams in **MT1767** for wiring installations. In a house with a central workroom and half house brooding, position the scales equal distance from the center of the house; One in the brood end, and one in the non-brood end. Position the scales between the inner most feeder and drinker lines if the space permits. If there is not enough room between the lines for easy operation, then place the scales inside the inner most line (See **Figure 1**).

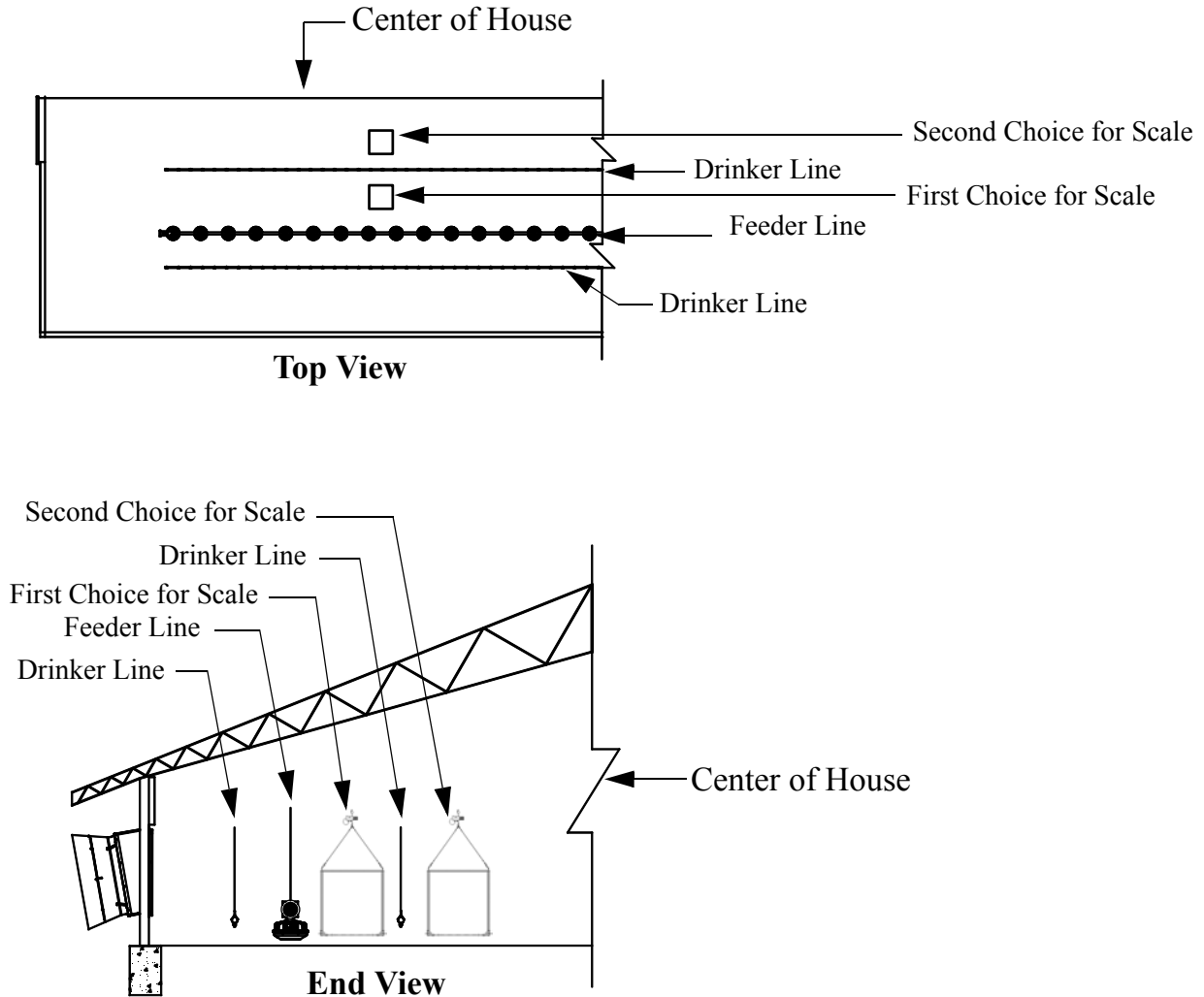
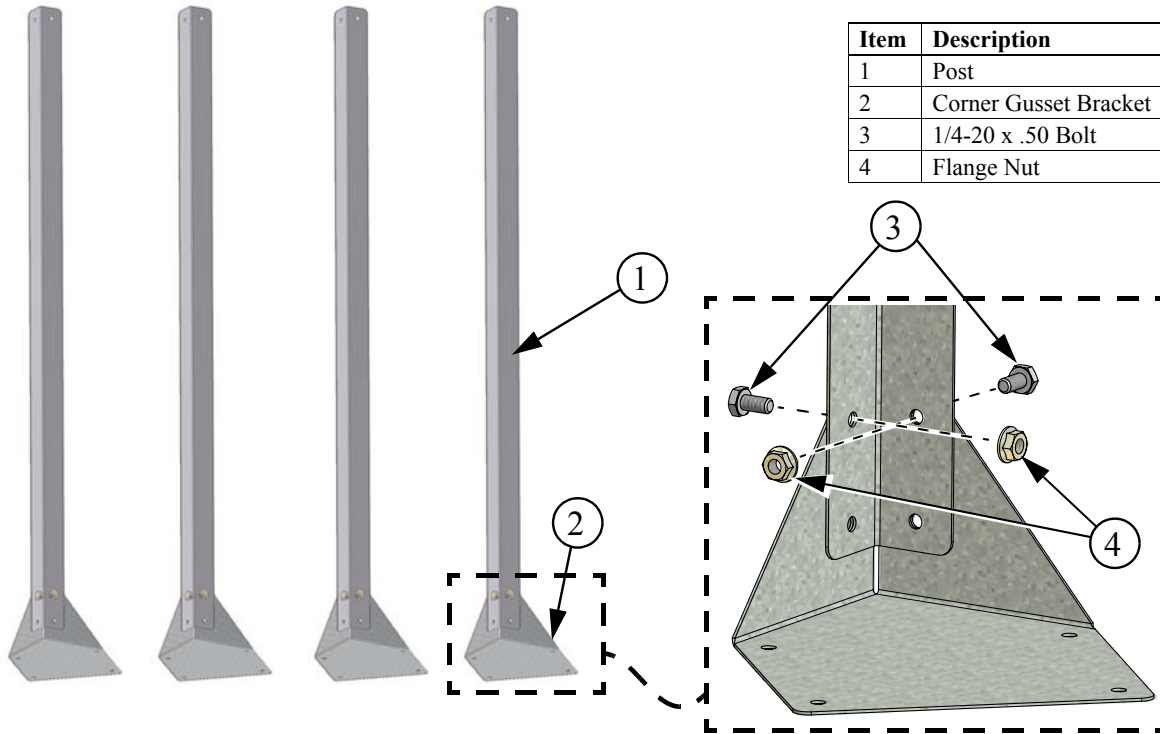


Figure 1. Scale Location

Assembly

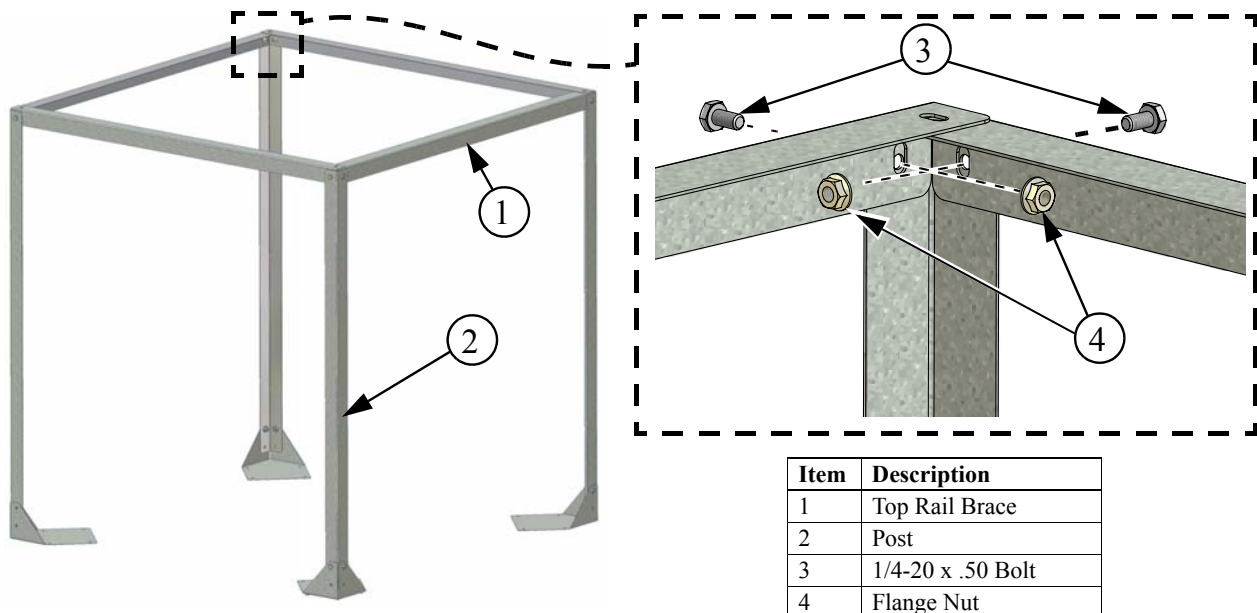
Attach the Posts (**Item 1, Figure 2**) to the Corner Gusset Brackets (**Item 2**) with two 1/4-20 x .50 Bolts (**Item 3**) and Flange Nuts (**Item 4**) *only in the upper most holes as shown.*



| Item | Description |
|------|-----------------------|
| 1 | Post |
| 2 | Corner Gusset Bracket |
| 3 | 1/4-20 x .50 Bolt |
| 4 | Flange Nut |

Figure 2. Attaching Gusset Brackets

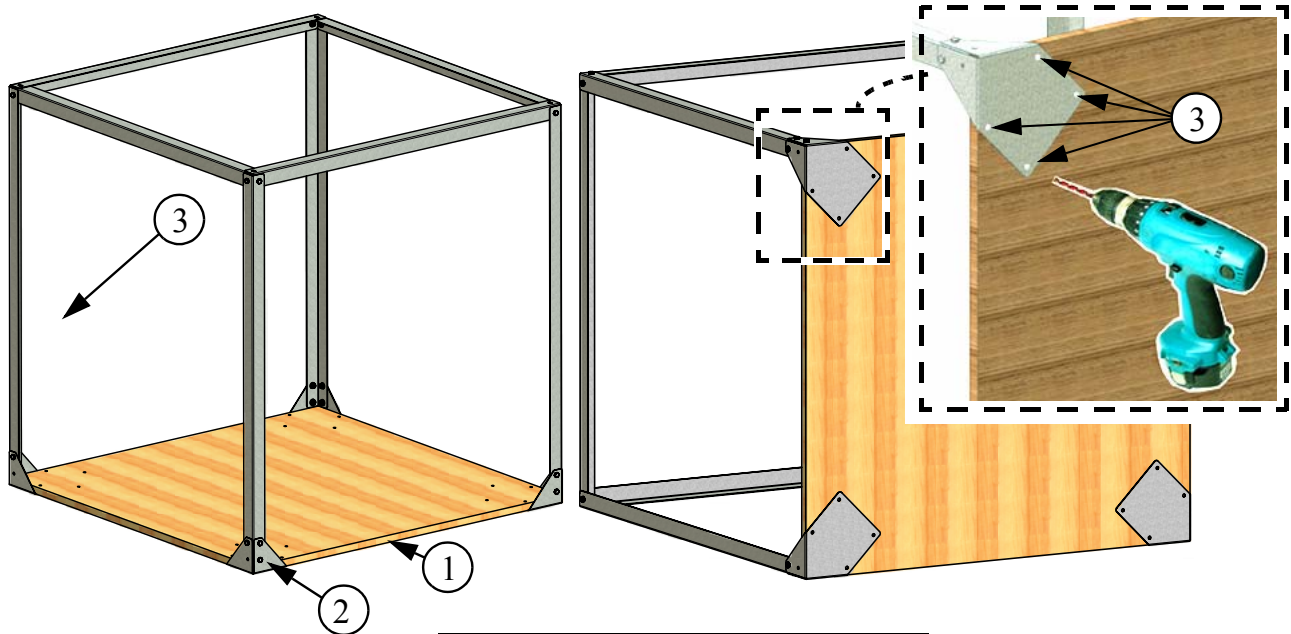
Keeping the Top Rail Braces (**Item 1, Figure 3**) inside the Posts (**Item 2**), attach them to the Posts (**Item 3**) with 1/4-20 x .50 Bolts (**Item 3**) and Flange Nuts (**Item 4**).



| Item | Description |
|------|-------------------|
| 1 | Top Rail Brace |
| 2 | Post |
| 3 | 1/4-20 x .50 Bolt |
| 4 | Flange Nut |

Figure 3. Attaching Top Rail Braces

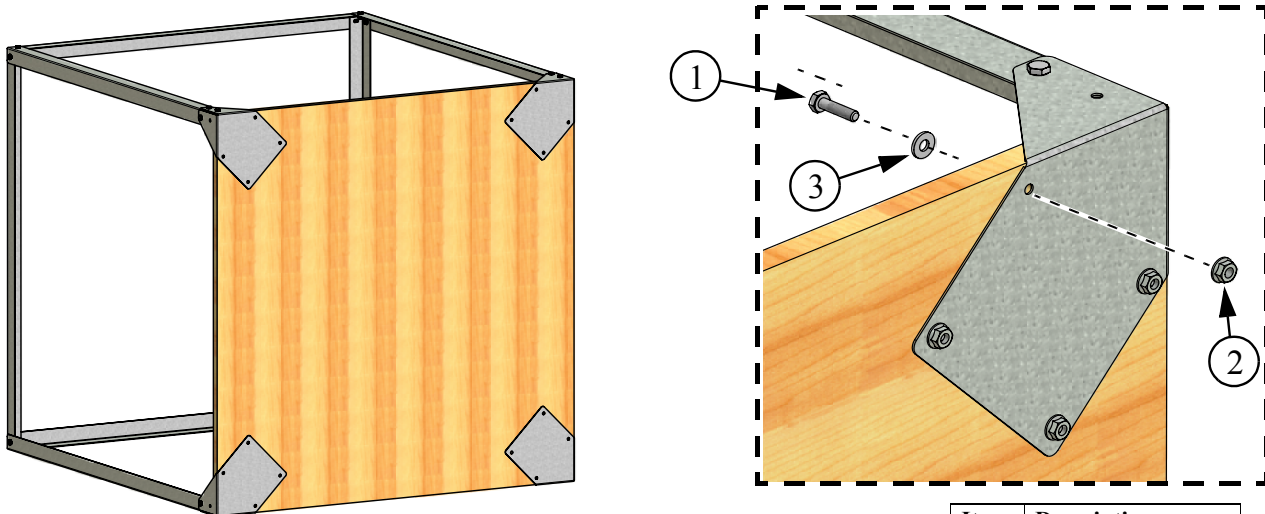
Cut a piece of Plywood or similar material to 39" x 39" (100cm x 100cm) to use as the Turkey Platform (**Item 1, Figure 4**). Set the Platform you created down onto the Corner Gusset Brackets (**Item 2**). Turn the entire assembly over on its side while keeping the Plywood in place. Using the holes in the Corner Gusset Brackets for a pattern, drill 4 holes in each corner of the Platform. These holes will be used to attach the Platform to the Corner Gusset Brackets.



| Item | Description |
|------|--------------------------------------|
| 1 | Plywood (39" x 39") [100cm x 100 cm] |
| 2 | Corner Gusset Bracket |
| 3 | Holes in Corner Gusset Bracket |

Figure 4. Drilling Holes for attaching Platform

Attach the Platform to the Corner Gusset Brackets with (4) 1/4-20 x .1.75 Bolts (**Item 1, Figure 5**), Flange Nuts (**Item 2**), and washers (**Item 3**) as shown. *Note the direction of the Bolts.*

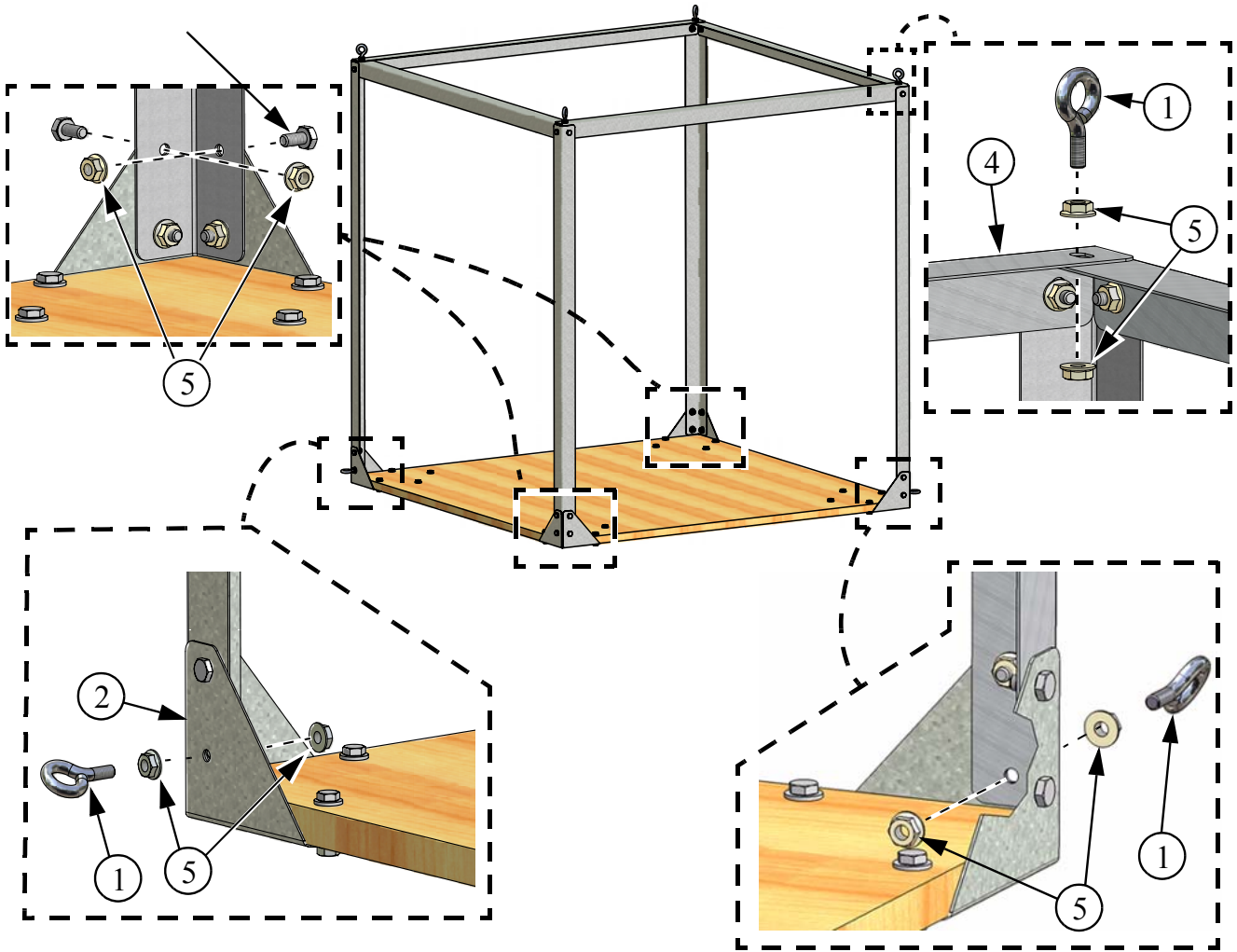


| Item | Description |
|------|---------------------|
| 1 | 1/4-20 x 1.75" Bolt |
| 2 | Flange Nut |
| 3 | Washer |

Figure 5. Attaching Platform to Corner Gusset Brackets

Now that the Platform is attached flip the Turkey Scale right side up and assemble in this order...

1. Pick any two *opposite bottom corners* of the Scale and attach an Eyebolt (**Item 1, Figure 6**) to the lower hole in the Corner Gusset Bracket (**Item 5**) using two 1/4-20 Flange Nuts (**Item 5**); one on the Post side and one on the Corner Gusset Bracket side (**See Figure 6**). These Eyebolts will later be used along with anti sway rods to keep the Scale from swaying side to side.
2. Use 1/4-20 x .50 Bolts (**Item 3**) and Flange Nuts in the remaining 6 *lower Post Holes* as shown in **Figure 6**.
3. Fasten the Top Rail Braces (**Item 4**) together with 4 Eyebolts (**Item 1**) and 8 Flange Nuts (*2 per Eyebolt*) in the four corners **as shown**.



| Item | Description |
|------|-----------------------|
| 1 | Eyebolt |
| 2 | Corner Gusset Bracket |
| 3 | 1/4-20 x .50 Bolt |
| 4 | Top Rail Brace |
| 5 | Flange Nut |

Figure 6. Eyebolts and Remaining Hardware

Attach (4) Snap Spring Hooks (**Item 1, Figure 7**) and (4) Cable Assemblies (**Item 2**) to the Eyebolts (**Item 3**) in the four corners of the Scale. Attach all four loose ends of the Cable Assemblies to another Snap Spring Hook. Using Screw Hooks (**Item 8**) included in the Hardware Kit, attach a Pulley Assembly (**Item 4**) above where you want your Scale, and a Pulley Assembly above where you are going to mount the Winch (**Item 5**). Mount the Winch and run Cable through the Pulleys and at the end of the Cable attach a Snap Spring Hook. Use the Snap Spring Hook at the end of the Cable to hook onto the hole in the Top of the Load Cell (**Item 7**). Hook the Snap Spring Hook that was earlier attached to the four Cable assemblies to the Hole at the bottom of the Load Cell. Once Scale is hung, run a rod (**Item 9**) through the Bottom Eyebolts to keep the scale from swaying. See the Bird Scale Control Manual (**MT1767**) for Load Cell wiring and operation instructions.

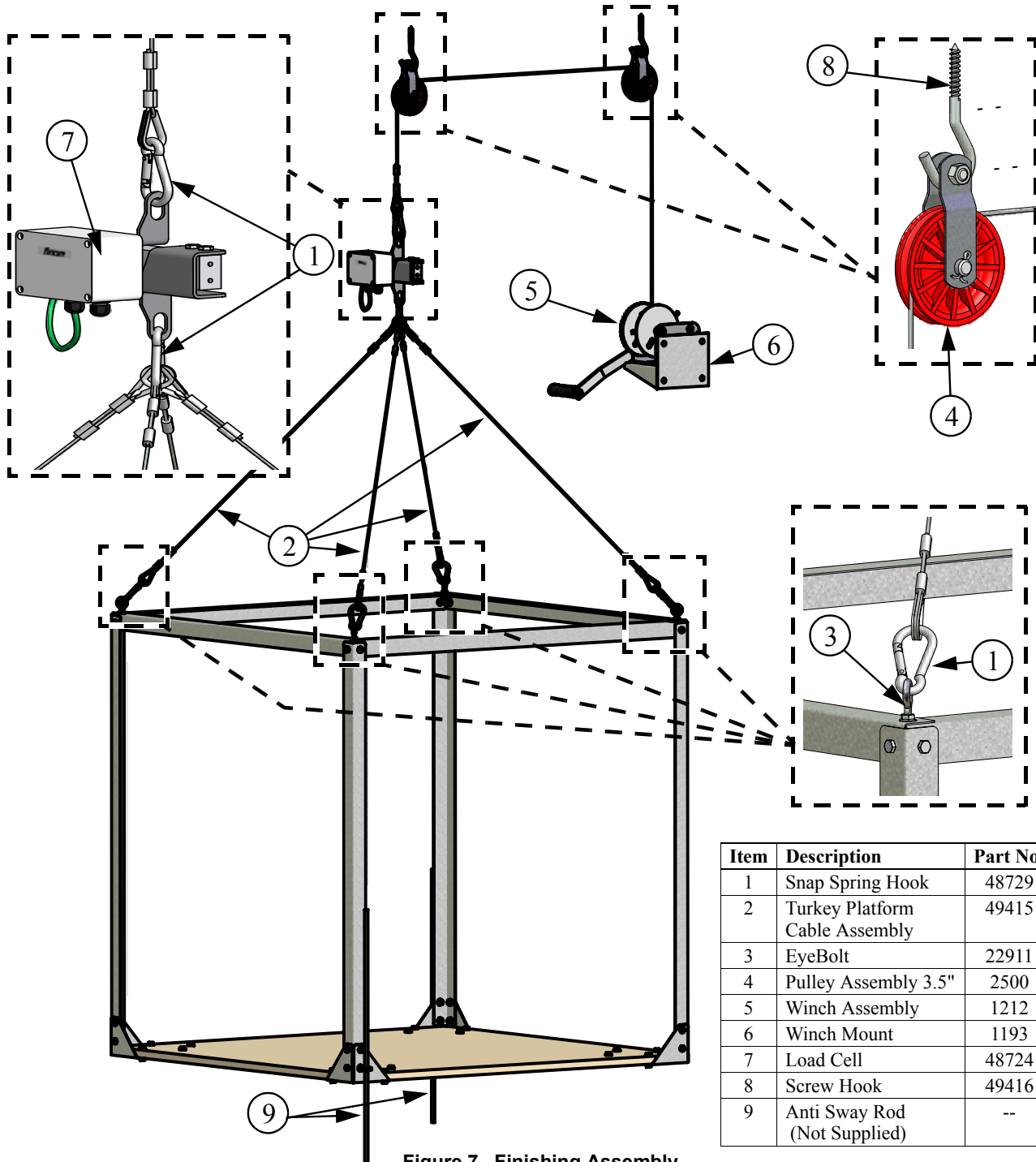
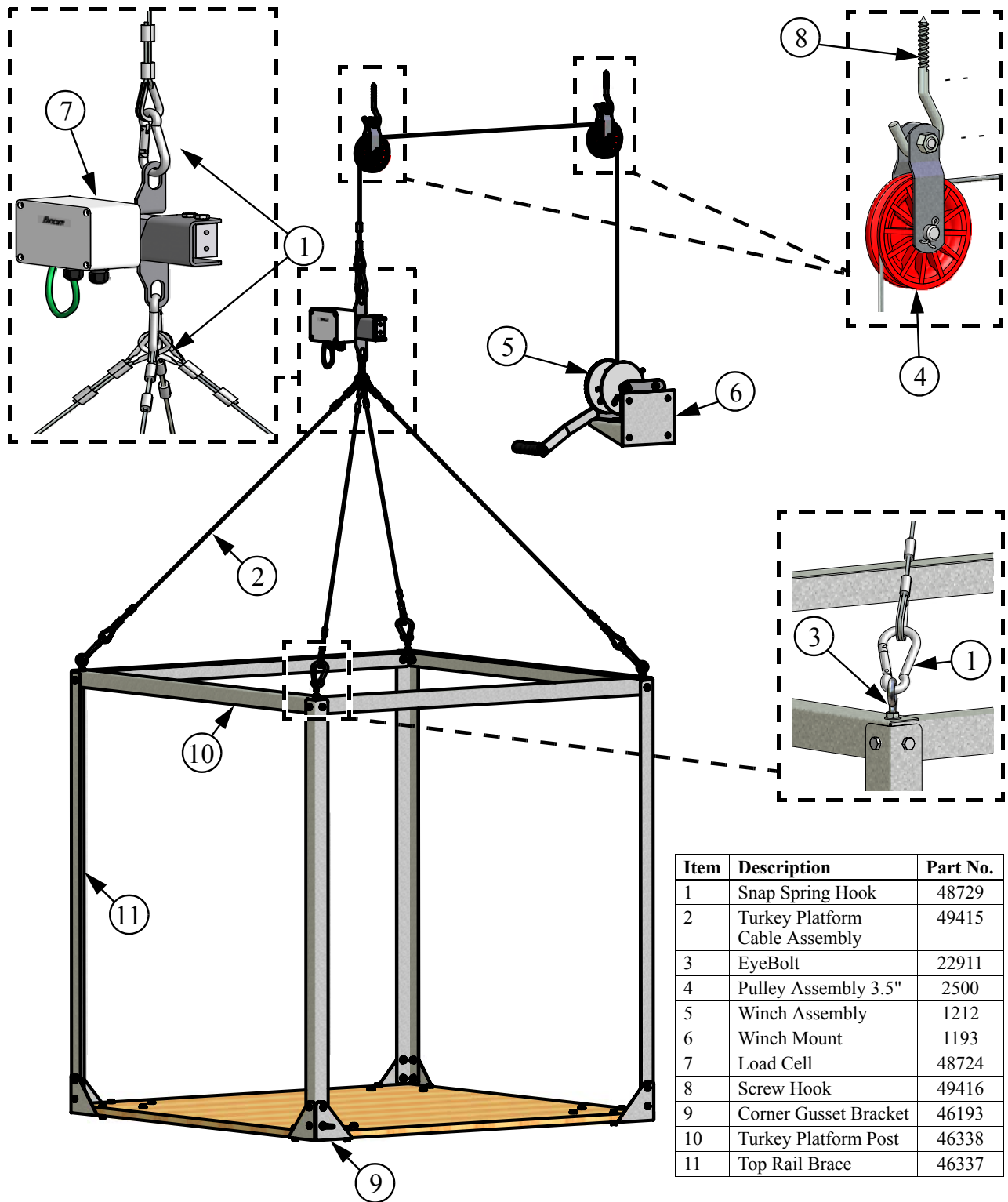


Figure 7. Finishing Assembly

Part Numbers



| Item | Description | Part No. |
|------|--------------------------------|----------|
| 1 | Snap Spring Hook | 48729 |
| 2 | Turkey Platform Cable Assembly | 49415 |
| 3 | Eye Bolt | 22911 |
| 4 | Pulley Assembly 3.5" | 2500 |
| 5 | Winch Assembly | 1212 |
| 6 | Winch Mount | 1193 |
| 7 | Load Cell | 48724 |
| 8 | Screw Hook | 49416 |
| 9 | Corner Gusset Bracket | 46193 |
| 10 | Turkey Platform Post | 46338 |
| 11 | Top Rail Brace | 46337 |

C-Collect[®] ***by CTB Inc.***

Revisions to this Manual

| Page No. | Description of Change |
|-----------------|------------------------------|
|-----------------|------------------------------|

Contact your nearby C-Collect[®] distributor or representative for additional parts and information.

CTB Inc.
P.O. Box 2000 • Milford, Indiana 46542-2000 • U.S.A.
Phone (574) 658-4101 • Fax (877) 730-8825
E-Mail: ctb@ctbinc.com • Internet: <http://www.ctbinc.com>

Printed in the U.S.A.