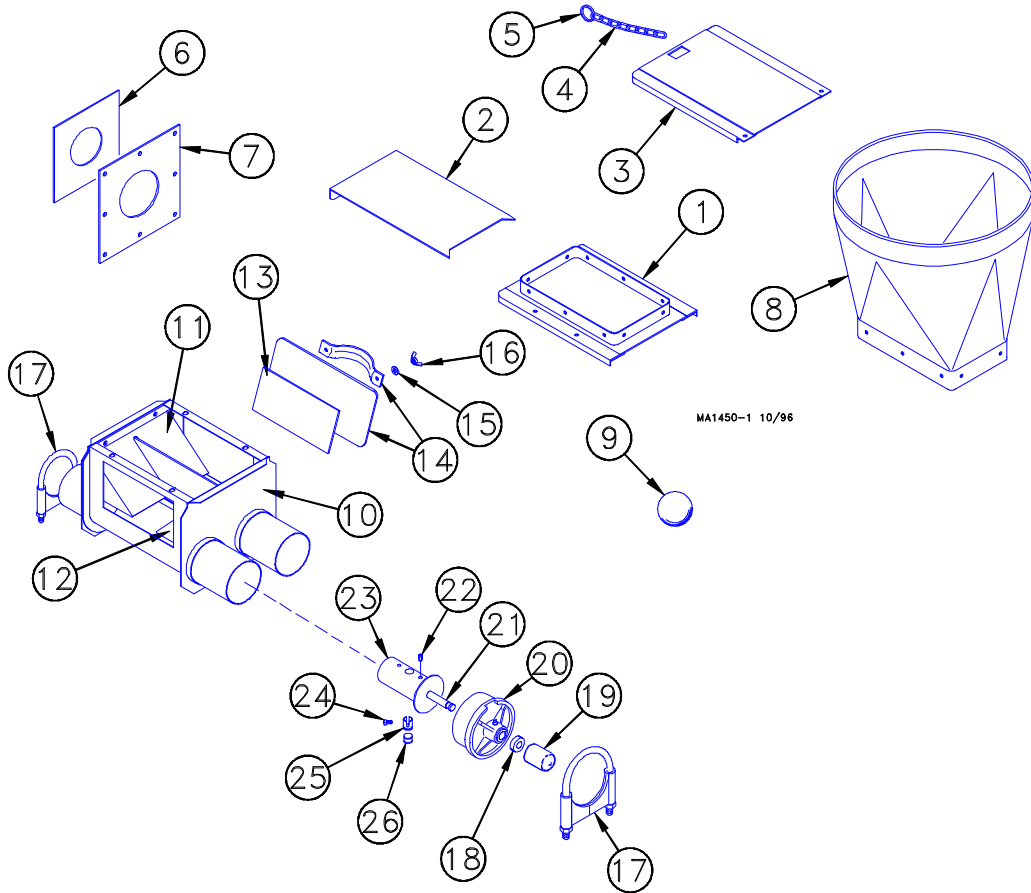




Model 90 Twin Straight-Through Tandem Boot System

Part No. 38916

for ULTRAFLO® Cage Feeding System



Item	Description	Part No.	Item	Description	Part No.
1 ¹	Transfer Plate Weldment	4359	14	Clean-Out Cover	6301
2 ¹	Slide	4357	15	Sealing Washer	8491
3 ¹	Slide Shield	4876	16	5/16-18 Wing Nut	2146
4 ¹	Chain	2128-1	17	Tube Clamp Kit	6721
5 ¹	Ring	1706	18 ²	5/8" Set Collar	1386
6	Neoprene Seal	5035	19 ²	Safety Cap	29702
7	Seal Ring	2612	20 ²	Bearing Cap Assembly	34830
8	Straight Out Upper Boot	6093	21 ²	Anchor Shaft	6832
9	Cannonball	3531	22 ²	5/16-18 x 3/8" Set Screw	1174
10	Twin Boot Body Weldment	36354	23 ²	Anchor Tube Weldment	26048
11	Twin Outlet Baffle	36798	24 ²	5/16-18 x 1/2" Set Screw	5095
12	Twin Inlet Boot Baffle	36797	25 ²	Clamp Pin	4702
13	Back Plate Weldment	6298	26 ²	Clamp Spacer	5009

¹Items 1 through 5 may be ordered under Chore-Time Part No. 6284.

²These components may be ordered as a Model 90 Anchor Bearing Assembly under Chore-Time Part No. 35345. Items 1 through 26 (except item #8) may be ordered as a Model 90 Straight Through Tandem Lower Boot under Chore-Time Part No. 38917.

Contact your nearby Chore-Time distributor or representative for additional parts and information.

Chore-Time Equipment, A Division of CTB, Inc.
P.O. Box 2000, Milford, Indiana 46542-2000 U.S.A.
Phone: 219-658-4101 • E-Mail: ctb@ctbinc.com

MC1450A
October 1996