

# Circulating Feed Delivery System

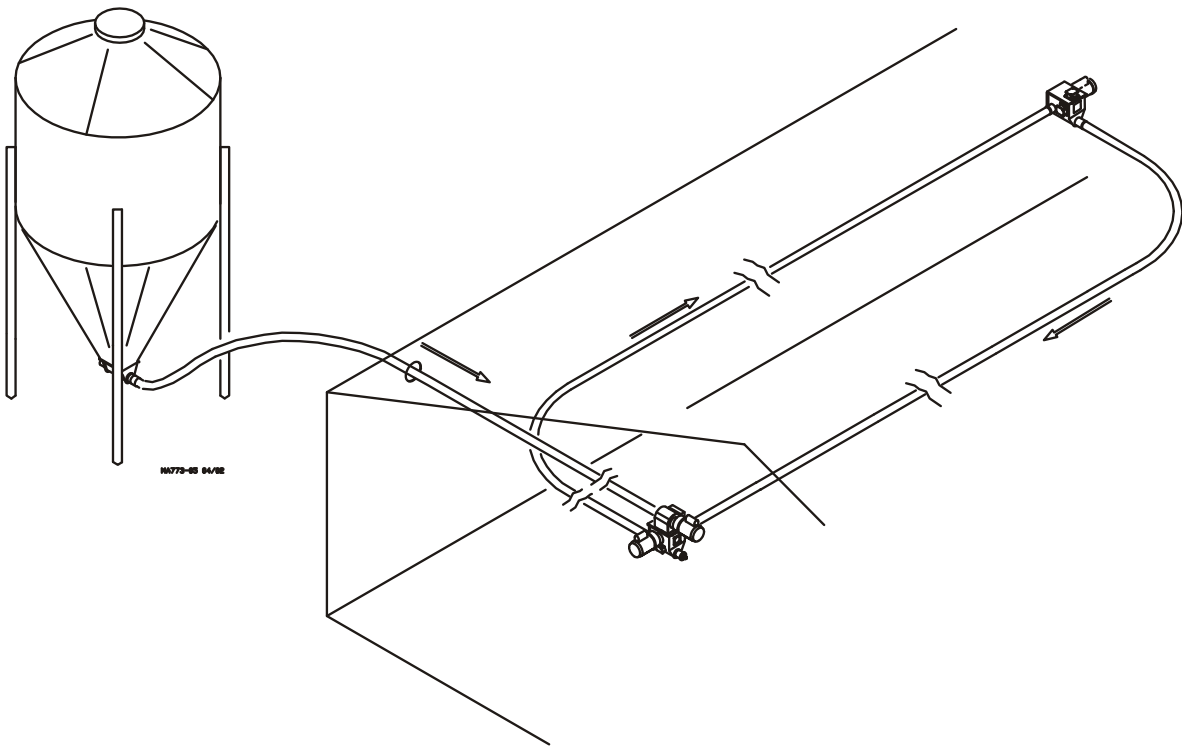
## Installation Instructions

for

**Model 55, 75, 75 Stainless, 75 PLUS, 75 Plus Stainless,  
90, & HMC FLEX-AUGER® Feed Delivery Systems**

Installation and Operators Manual

Installation and Operators Manual



## Chore-Time Limited Warranty

Chore-Time Group, a division of CTB, Inc. ("Chore-Time") warrants each new CHORE-TIME FLEX-AUGER® part manufactured by Chore-Time to be free from defects in material or workmanship under normal usage and conditions, for One (1) year from the date of installation by the original purchaser ("Warranty"). If such a defect is determined by Chore-Time to exist within the applicable period, Chore-Time will, at its option, (a) repair the Product or Component Part free of charge, F.O.B. the factory of manufacture or (b) replace the Product or Component Part free of charge, F.O.B. the factory of manufacture. This Warranty is not transferable, and applies only to the original purchaser of the Product.

### CONDITIONS AND LIMITATIONS

THIS WARRANTY CONSTITUTES CHORE-TIME'S ENTIRE AND SOLE WARRANTY AND CHORE-TIME EXPRESSLY DISCLAIMS ANY AND ALL OTHER WARRANTIES, INCLUDING, BUT NOT LIMITED TO, EXPRESS AND IMPLIED WARRANTIES, INCLUDING, WITHOUT LIMITATION, WARRANTIES AS TO MERCHANTABILITY OR FITNESS FOR PARTICULAR PURPOSES. CHORE-TIME shall not be liable for any direct, indirect, incidental, consequential or special damages which any purchaser may suffer or claim to suffer as a result of any defect in the Product. Consequential or Special Damages as used herein include, but are not limited to, lost or damaged products or goods, costs of transportation, lost sales, lost orders, lost income, increased overhead, labor and incidental costs, and operational inefficiencies. *Some jurisdictions prohibit limitations on implied warranties and/or the exclusion or limitation of such damages, so these limitations and exclusions may not apply to you. This warranty gives the original purchaser specific legal rights. You may also have other rights based upon your specific jurisdiction.*

Compliance with federal, state and local rules which apply to the location, installation and use of the Product are the responsibility of the original purchaser, and CHORE-TIME shall not be liable for any damages which may result from non-compliance with such rules.

The following circumstances shall render this Warranty void:

- Modifications made to the Product not specifically delineated in the Product manual.
- Product not installed and/or operated in accordance with the instructions published by CHORE-TIME.
- All components of the Product are not original equipment supplied by CHORE-TIME.
- Product was not purchased from and/or installed by a CHORE-TIME authorized distributor or certified representative.
- Product experienced malfunction or failure resulting from misuse, abuse, mismanagement, negligence, alteration, accident, or lack of proper maintenance, or from lightning strikes, electrical power surges or interruption of electricity.
- Product experienced corrosion, material deterioration and/or equipment malfunction caused by or consistent with the application of chemicals, minerals, sediments or other foreign elements.
- Product was used for any purpose other than for the care of poultry and livestock.

The Warranty and Extended Warranty may only be modified in writing by an officer of CHORE-TIME. CHORE-TIME shall have no obligation or responsibility for any representations or warranties made by or on behalf of any distributor, dealer, agent or certified representative.

Effective: **April 2014**

Chore-Time Group, A division of CTB, Inc.  
PO Box 2000  
Milford, Indiana 46542-2000 USA  
Phone (574) 658-4101 Fax (877) 730-8825  
Email: [choretime@choretime.com](mailto:choretime@choretime.com)  
Internet: [www.choretime.com](http://www.choretime.com)

# Table of Contents

| Topic   | Page     |
|---|----------|
| <b>General</b> .....  | <b>4</b> |
| <b>Safety Information</b> .....   | <b>5</b> |
| Safety–Alert Symbol.....  | 5        |
| Signal Words.....   | 5        |
| DANGER: Moving Auger.....   | 5        |
| DANGER: Electrical Hazard.....  | 5        |
| Auger Caution!.....   | 6        |
| Introduction.....   | 6        |
| Installation.....   | 6        |
| Standard Circulating Feed Delivery System.....                                      | 6        |
| Over and Under Feed Delivery System.....  | 7        |
| <b>Wiring</b> .....   | <b>8</b> |
| Models 55, 75/SS, 90, and HMC Single Phase, 230V, 50/60 Hz, w/o Motor Starters..... | 8        |
| Model 75 Plus/SS Single Phase, 230V, 50/60 Hz, w/o Motor Starters.....              | 9        |
| Single Phase, 230V, 50/60 Hz, w/ Motor Starters.....                                | 10       |
| Three Phase, 230/380/415/460V, 50/60 Hz.....  | 11       |
| .....   | 11       |
| Part Numbers.....   | 12       |
| Extension Hopper Part Numbers.....  | 12       |
| Parts List.....   | 13       |

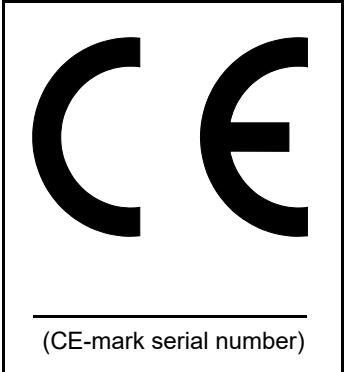
# General

The Chore-Time Circulating Feed Delivery System is designed to Deliver Feed to deliver Feed in a Livestock application. Using this equipment for any other purpose or in a way not within the operating recommendations specified in this manual will void the warranty and may cause personal injury.

This manual is designed to provide comprehensive planning, installation, operation, and parts listing information. The Table of Contents provides a convenient overview of the information in this manual. The Table of Contents also specifies which pages contain information for the sales personnel, installer, and consumer (end user).

Refer to Chore-Time Model 55/75/75 Stainless/75 PLUS/75 Plus Stainless/90/HMC Installation Manual for additional installation, operation, and parts listing information.

**IMPORTANT: CE stands for certified Europe.** It is a standard which equipment must meet or exceed in order to be sold in Europe. CE provides a benchmark for safety and manufacturing issues. **CE is required only on equipment sold in Europe.**



Chore-Time Equipment recognizes CE Mark and pursues compliance in all applicable products. *Fill in the CE-Mark serial number in the blank space provided for future reference.*

Please fill in the following information about your Product.  
Keep this manual in a clean, dry place for future reference.

**Distributor's Name** \_\_\_\_\_

**Distributor's Address** \_\_\_\_\_

**Distributor's Phone** \_\_\_\_\_ **Date of Purchase** \_\_\_\_\_

**Installer's Name** \_\_\_\_\_

**Installer's Address** \_\_\_\_\_

**Installer's Phone** \_\_\_\_\_ **Date of Installation** \_\_\_\_\_

**System Specifications** \_\_\_\_\_

\_\_\_\_\_

\_\_\_\_\_

## Safety Information

**Caution, Warning and Danger Decals** have been placed on the equipment to warn of potentially dangerous situations. Care should be taken to keep this information intact and easy to read at all times. Replace missing or damaged safety signs.

Using the equipment for purposes other than specified in this manual may cause personal injury and or damage to the equipment.

### Safety–Alert Symbol

**This is a safety–alert symbol.** When you see this symbol on your equipment, be alert to the potential for personal injury. This equipment is designed to be installed and operated as safely as possible...however, hazards do exist.



### Signal Words

**Signal words** are used in conjunction with the safety–alert symbol to identify the severity of the warning.

**DANGER** indicates an imminently hazardous situation which, if not avoided, **WILL** result in death or serious injury.



**WARNING** indicates a potentially hazardous situation which, if not avoided, **COULD** result in death or serious injury.



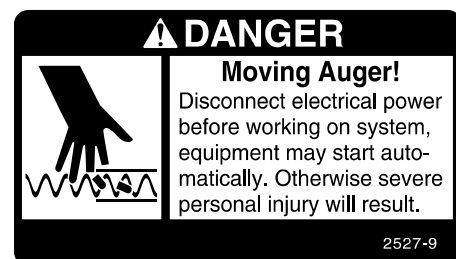
**CAUTION** indicates a hazardous situation which, if not avoided, **MAY** result in minor or moderate injury.



### DANGER: Moving Auger

This decal is placed on the Panel Weldment.

Severe personal injury will result, if the electrical power is not disconnected, prior to servicing the equipment.



### DANGER: Electrical Hazard

Disconnect electrical power before inspecting or servicing equipment unless maintenance instructions specifically state otherwise.

Ground all electrical equipment for safety.

All electrical wiring must be done by a qualified electrician in accordance with local and national electric codes.

Ground all non-current carrying metal parts to guard against electrical shock.

With the exception of motor overload protection, electrical disconnects and over current protection are not supplied with the equipment.





## Auger Caution!

Use caution when working with the Auger—Springing auger may cause personal injury.

## Introduction

A Circulating Feed Delivery System makes it possible to regulate the amount of feed delivered to a particular drop tube, hopper, or drop feeder. The Circulating Feed Delivery System allows multiple feedings at random locations around the system without overloading or jamming the system with feed.

Many variations are possible using the Model 55, 75, 75 Stainless, 90, 75 PLUS, 75 Plus Stainless, or HMC FLEX-AUGER.

Plan the system carefully before beginning installation.

## Installation

1. Install the Control Unit to deliver feed from bin to circulating system.
2. Remove the top cover of the Extension Hopper and replace with an Adapter Plate (part no. 45970). Fasten Control Unit to Transition Plate. See Detail "A".
3. Install auger tubes and elbows to reach opposite corner of circulating system
4. Install the Extension Hopper. See Detail "B".
5. Install auger tubes and elbows to connect the system to the first Extension Hopper.
6. Wire the system according to the appropriate wiring diagram in this instruction.

## Standard Circulating Feed Delivery System

A proposed, typical plan for a Circulating Feed Delivery System is shown below in **Figure 1.**

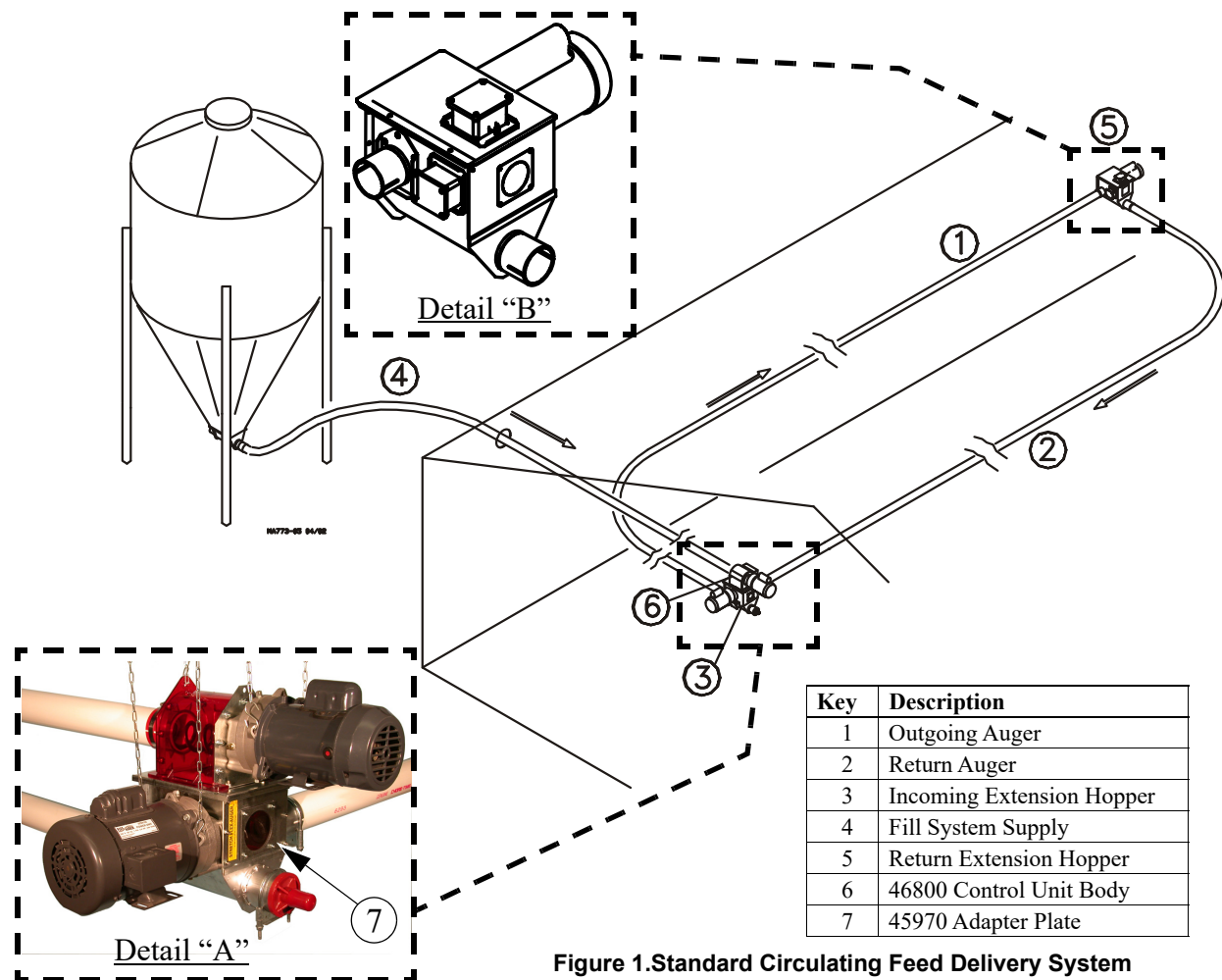


Figure 1. Standard Circulating Feed Delivery System

## Over and Under Feed Delivery System

**Over and Under-** Another proposed plan is shown in **Figure 2**. No Elbows are required for this circulating system. This plan is typically used to supply feed to multiple lines or loops running independent of one another. This over-and-under system should dispense the feed from the return circulating line.

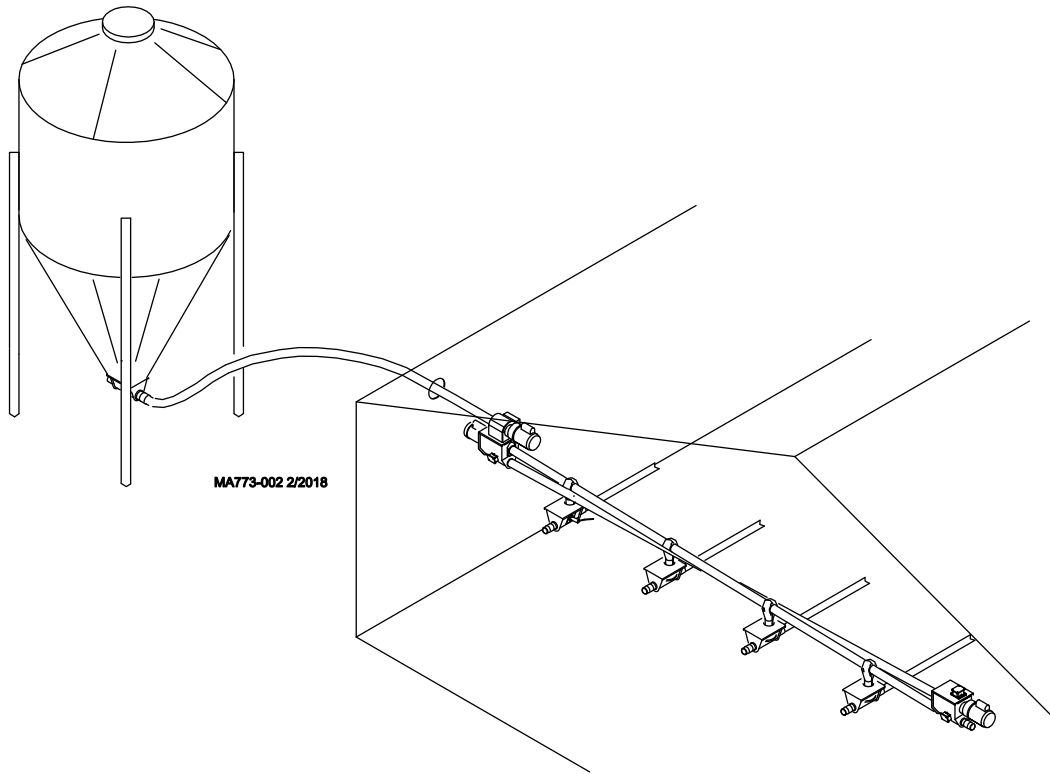
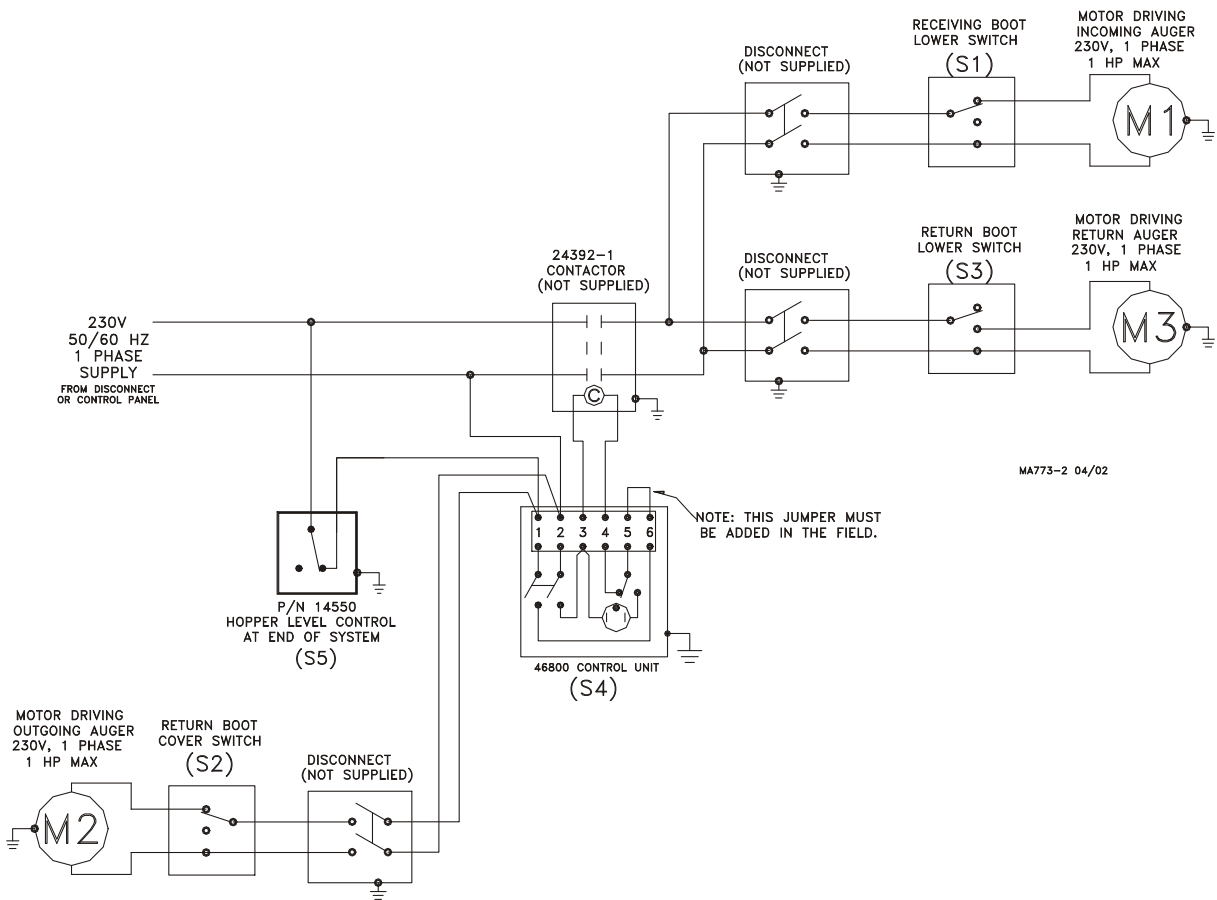
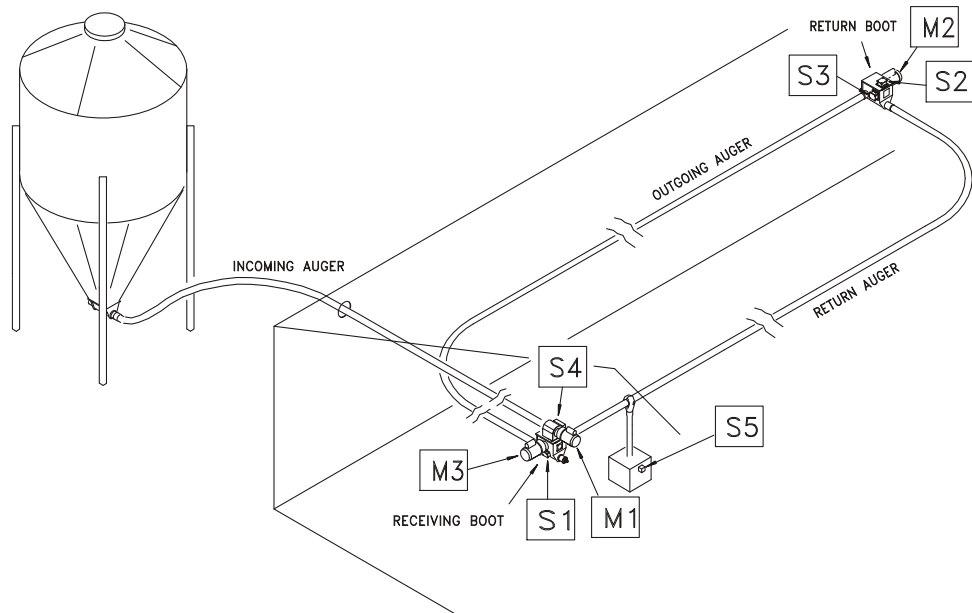


Figure 2.Over and Under Feed Delivery System

# Wiring

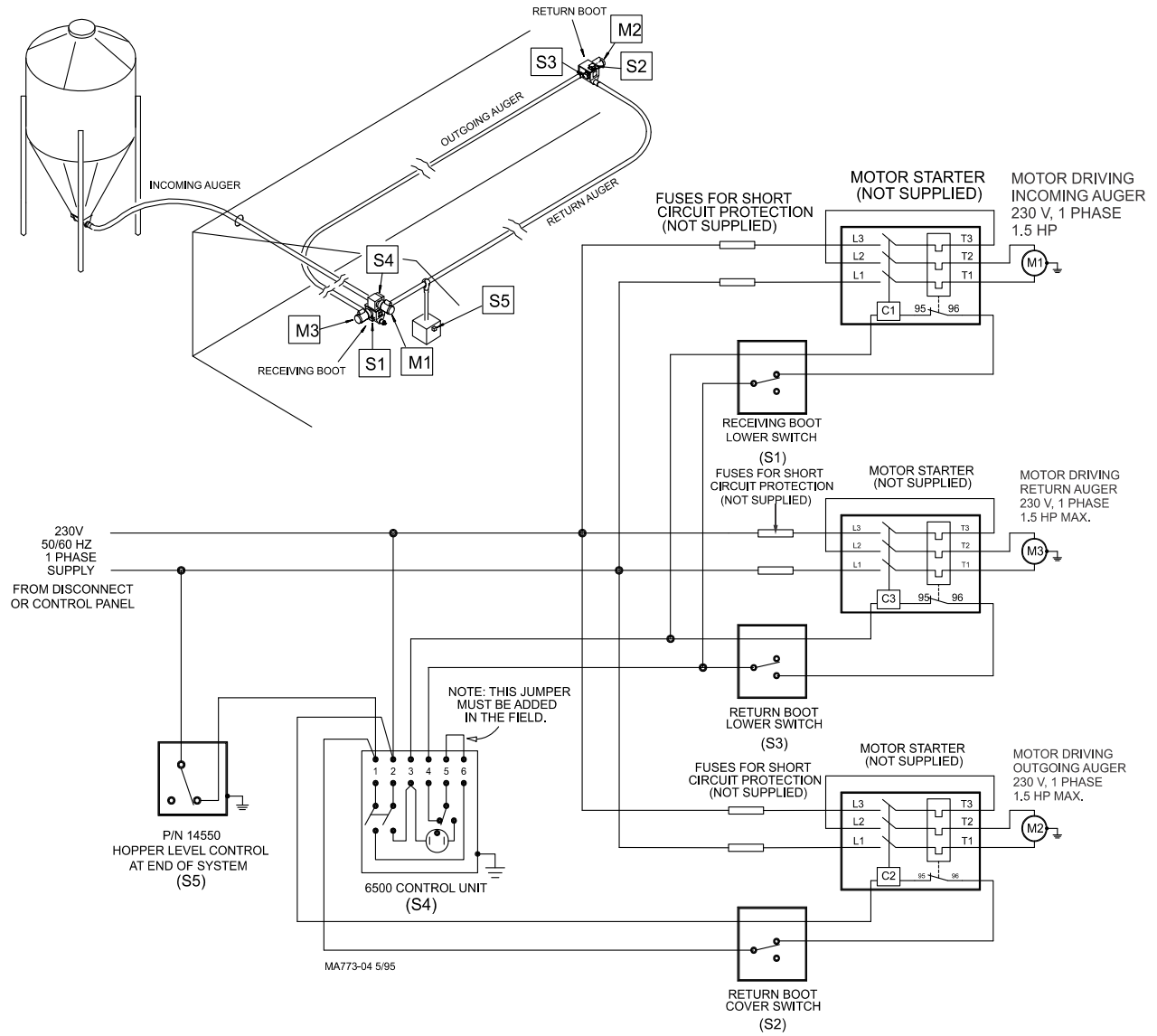
Models 55, 75/SS, 90, and HMC Single Phase, 230V, 50/60 Hz, w/o Motor Starters



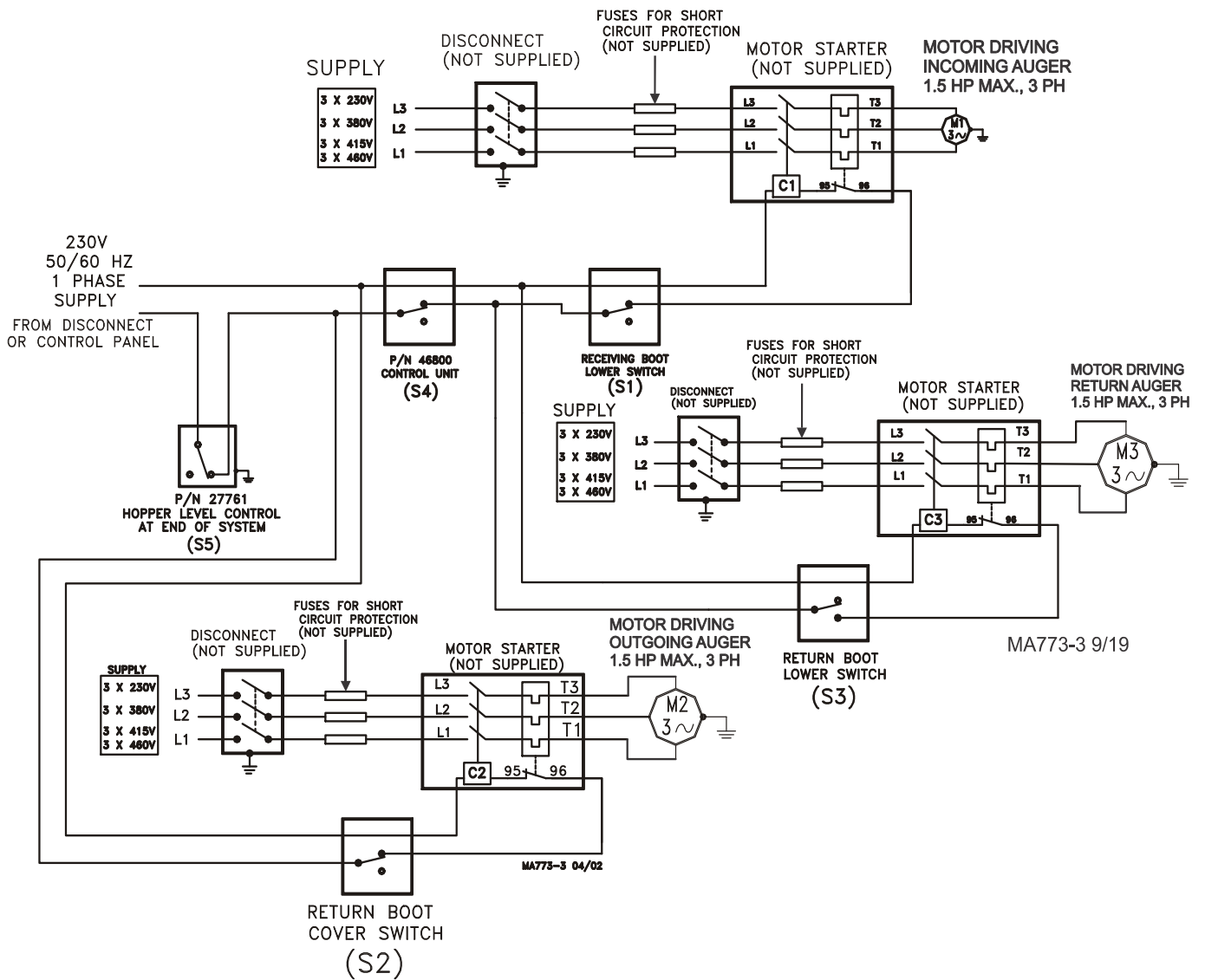
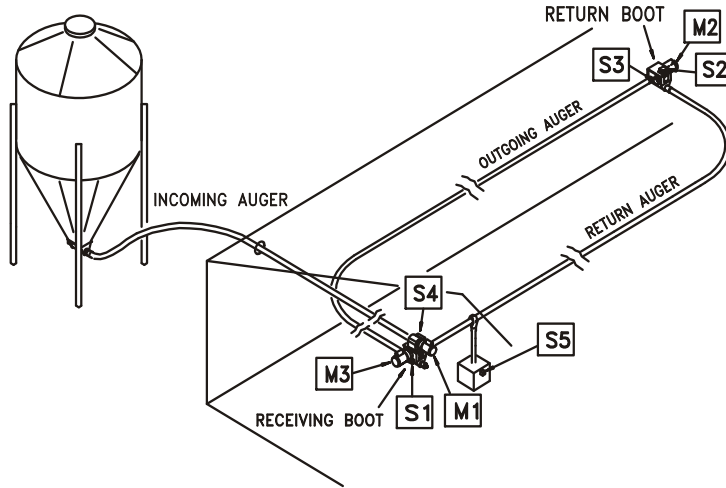




### Single Phase, 230V, 50/60 Hz, w/ Motor Starters



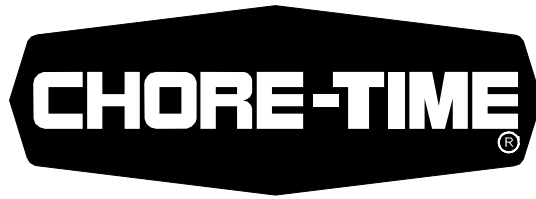
### Three Phase, 230/380/415/460V, 50/60 Hz





## Parts List

|  |                                 | Model 55<br>Kit<br>40170 | Model<br>75 Kit<br>7944 | Model 75<br>Stainless Kit<br>7944SS | Model 75<br>Plus Kit<br>56471 | Model 75 Plus<br>Stainless<br>56471SS | Model 90<br>Kit<br>7869 | Model<br>HMC Kit<br>7849 |
|--|---------------------------------|--------------------------|-------------------------|-------------------------------------|-------------------------------|---------------------------------------|-------------------------|--------------------------|
| Key  | Description                     | Part No.                 |                         |                                     |                               |                                       |                         |                          |
| 1*   | Safety Cap                      | --                       | 29702                   | 29702                               | 29702                         | 29702                                 | 29702                   | 29702                    |
| 2  | Tube Clamp Kit                  | 29520                    | 4141                    | 4141                                | 4141                          | 4141                                  | 6721                    | 6721                     |
| 3*   | 5/8" Set Collar                 | 1386                     | 1386                    | 1386                                | 1386                          | 1386                                  | 1386                    | 1386                     |
| 4  | Tube Clamp Kit                  | 35726                    | 6515                    | 6515                                | 6515                          | 6515                                  | 6721                    | 6721                     |
| 5*   | Bearing Cap Assembly            | --                       | 35440                   | 35440                               | 35440                         | 35440                                 | 34830                   | 34830                    |
| 6***   | Cover Assembly                  | 7838                     | 7838                    | 7838SS                              | 7838                          | 7838SS                                | 7838                    | 7838                     |
| 7*   | Universal Anchor Shaft          | --                       | 43281                   | 43281                               | 43281                         | 43281                                 | 43281                   | 43281                    |
| 8*   | Clamp Spacer                    | --                       | --                      | --                                  | --                            | --                                    | 5009                    | --                       |
| 9*   | Clamp Pin                       | --                       | 4702                    | 4702                                | 56409                         | 56409                                 | 4702                    | 4702                     |
| 10*  | 5/16-18 x 1/2" Set Screw        | --                       | 5095                    | 5095                                | 5095                          | 5095                                  | 5095                    | 5095                     |
| 11*  | 5/16-18 x 3/8" Set Screw        | --                       | 1174                    | 1174                                | 1174                          | 1174                                  | 1174                    | 1174                     |
| 12*  | Anchor Weldment                 | 39410                    | 36393                   | 36393                               | 56387                         | 56387                                 | 26048                   | 36393                    |
| 13   | Cover Plate                     | 4878                     | 4878                    | 4878SS                              | 4878                          | 4878SS                                | 4878                    | 4878                     |
| 14**<br>***  | Seal                            | 4873                     | 4873                    | 4873                                | 4873                          | 4873                                  | 4873                    | 4873                     |
| 15***  | Switch and Plate Assembly       | 7840                     | 7840                    | 7840SS                              | 7840                          | 7840SS                                | 7840                    | 7840                     |
| 16***  | Diaphragm Assembly              | 7900                     | 7900                    | 7900                                | 7900                          | 7900                                  | 7900                    | 7900                     |
| 17   | Boot Body Weld.                 | 40168                    | 7878                    | 7878SS                              | 7878                          | 7878SS                                | 28881                   | 28881                    |
| 18   | Window Plate                    | 7842                     | 7842                    | 7842SS                              | 7842                          | 7842SS                                | 7842                    | 7842                     |
| 19   | Window                          | 7852                     | 7852                    | 7852                                | 7852                          | 7852                                  | 7852                    | 7852                     |
| 20   | Tube Anchor Weldment            | 35531                    | 6518                    | 6518SS                              | 6518                          | 6518SS                                | 5069                    | 5069                     |
| 21   | Access Panel Assembly           | 7928                     | 7928                    | 7928SS                              | 7928                          | 7928SS                                | 7928                    | 7928                     |
| 22   | Cannonball                      | 3621                     | 3531                    | 3531                                | 3531                          | 3531                                  | 3531                    | 3531                     |
| 23**   | Switch Box Cover                | 6776                     | 6776                    | 6776                                | 6776                          | 6776                                  | 6776                    | 6776                     |
| 24**   | Gasket                          | 6777                     | 6777                    | 6777                                | 6777                          | 6777                                  | 6777                    | 6777                     |
| 25**   | Switch Box                      | 7841                     | 7841                    | 7841                                | 7841                          | 7841                                  | 7841                    | 7841                     |
| 26**   | Switch Mounting Plate           | 7908                     | 7908                    | 7908SS                              | 7908                          | 7908SS                                | 7908                    | 7908                     |
| 27**   | Paddle                          | 7896                     | 7896                    | 7896                                | 7896                          | 7896                                  | 7896                    | 7896                     |
| 28**   | 6-32 x 7/8" Pan Hd. Screw       | 1921                     | 1921                    | 1921                                | 1921                          | 1921                                  | 1921                    | 1921                     |
| 29**   | Compression Spring              | 6972                     | 6972                    | 6972                                | 6972                          | 6972                                  | 6972                    | 6972                     |
| 30**   | SPDT Actuator Switch            | 7114                     | 7114                    | 7114                                | 7114                          | 7114                                  | 7114                    | 7114                     |
| 31**   | Switch Insulation               | 1907-5                   | 1907-5                  | 1907-5                              | 1907-5                        | 1907-5                                | 1907-5                  | 1907-5                   |
| 32**   | Switch Bracket                  | 7068                     | 7068                    | 7068                                | 7068                          | 7068                                  | 7068                    | 7068                     |
| 33**   | 1/8 x 1" Rd Hd Rivet            | 8757                     | 8757                    | 8757                                | 8757                          | 8757                                  | 8757                    | 8757                     |
| 34   | 5/16-18 X 1/2 Socket Hd Screw   | --                       | 6850-3                  | 6850-3                              | 6850-3                        | 6850-3                                | 6850-3                  | 6850-3                   |
| 35   | 5/16-18 x 2-1/4 Socket Hd Screw | --                       | 6850-4                  | 6850-4                              | 6850-4                        | 6850-4                                | 6850-4                  | 6850-4                   |
| 36   | Anchor Block                    | --                       | 7703                    | 7703                                | 7703                          | 7703                                  | 7703                    | 7703                     |
| 37   | Driver Weldment                 | --                       | 7704                    | 56390                               | 56390                         | 56390                                 | 7706                    | 7704                     |
| *38  | Auger Clamp (Model 55)          | 39205                    | --                      | --                                  | --                            | --                                    | --                      | --                       |
| *39  | Anchor Bearing (Model 55)       | 39407                    | --                      | --                                  | --                            | --                                    | --                      | --                       |
| 40   | Cap (Model 55)                  | 29523                    | --                      | --                                  | --                            | --                                    | --                      | --                       |
| 41   | Stub Tube (Model 55)            | 4163                     | --                      | --                                  | --                            | --                                    | --                      | --                       |
| *42  | Socket Head Screw (Model 55)    | 6850-7                   | --                      | --                                  | --                            | --                                    | --                      | --                       |
| 43   | Tube Clamp Kit                  | 29515                    | 6515                    | 6515                                | 6515                          | 6515                                  | 6721                    | 6721                     |
| 44   | Auger Clamp Pin                 | --                       | --                      | --                                  | 56405                         | 56405                                 | --                      | --                       |
| 45   | 5/16-18 x 1" Socket Hd Screw    | --                       | --                      | --                                  | 6850-5                        | 6850-5                                | --                      | --                       |
| 46   | 5/16-18 Hex Lock Nut            | --                       | --                      | --                                  | 2148                          | 2148                                  | --                      | --                       |
| 47*  | .688 x 1.750 x .134 Washer      | 1484                     | --                      | --                                  | --                            | --                                    | --                      | --                       |
| 48*  | 1/4-20 x 1.50 Sk. Hd Cap Screw  | 5083-8                   | --                      | --                                  | --                            | --                                    | --                      | --                       |
| 49*  | Driver Tube                     | 2920                     | --                      | --                                  | --                            | --                                    | --                      | --                       |
| 50*  | Driver Block                    | 4642                     | --                      | --                                  | --                            | --                                    | --                      | --                       |
| <p>*These Anchor and Bearing Components may be ordered as complete Assemblies under the following Part Numbers:<br/> Model 55 (39405), Model 75/SS (37347), Model 75 Plus/SS (56417), Model 90 (35345), Model HMC (37241)</p> <p>**These Switch and Plate components may be ordered as an assembly under Chore-Time part number #7840/SS</p> <p>***The #7839/SS Cover Assembly includes items 6, 14, 15, and 16 and the required hardware.</p> |                                 |                          |                         |                                     |                               |                                       |                         |                          |



**MADE TO WORK.  
BUILT TO LAST.®**

### **Revisions to this Manual**

| <b>Page No.</b> | <b>Description of Change</b>                       | <b>ECO</b> |
|-----------------|--|------------|
| Various         | Added 75 Stainless, 75 Plus, and 75 Plus Stainless | 34341      |

**For additional parts and information, contact your nearest Chore-Time distributor or representative.  
Find your nearest distributor at: [www.choretime.com/contacts](http://www.choretime.com/contacts)**

Chore-Time Group, A division of CTB, Inc.  
PO Box 2000  
Milford, Indiana 46542-2000 USA  
Phone (574) 658-4101 Fax (877) 730-8825  
Email: [choretime@choretime.com](mailto:choretime@choretime.com)  
Internet: [www.choretime.com](http://www.choretime.com)