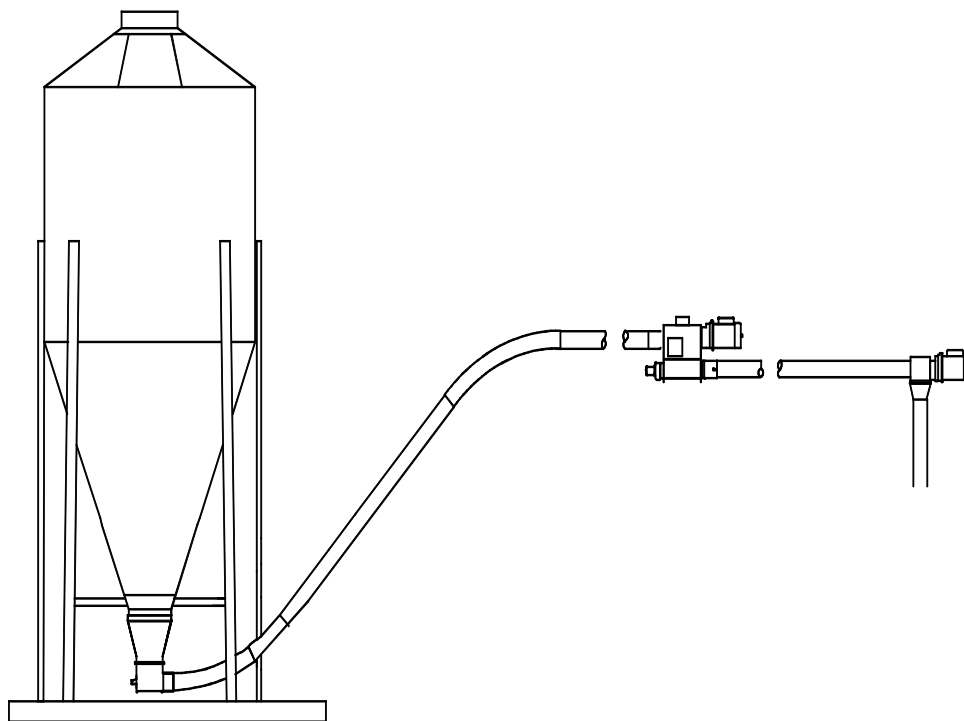


# CHORE-TIME<sup>®</sup>

## Extension Hopper

for

Model 55, 75, 75 Stainless, 75 Plus,  
75 Plus Stainless, 90, & HMC  
FLEX-AUGER Feed Delivery Systems



MA709-6 5/95

For additional parts and information, contact your nearest Chore-Time distributor or representative.  
Find your nearest distributor at: [www.choretime.com/contacts](http://www.choretime.com/contacts)

# Contents

<b>Topic</b>	<b>Page</b>
<b>Limited Warranty</b> .....	<b>3</b>
<b>Safety and General Information</b> .....	<b>4</b>
Follow Safety Instructions .....	4
Decal Descriptions .....	4
DANGER: Moving Auger .....	4
DANGER: Electrical Hazard .....	4
<b>Support Information</b> .....	<b>5</b>
<b>Introduction</b> .....	<b>6</b>
<b>Planning the Installation</b> .....	<b>7</b>
Straight Line Application .....	7
Right Hand Turn Application .....	8
Left Hand Turn Application .....	9
<b>Installation Instructions</b> .....	<b>10</b>
<b>Wiring</b> .....	<b>11</b>
(Single Phase, 230 V, 50/60Hz, w/o Motor Starters) .....	11
(Single Phase, 230 V, 50/60Hz, w/ Motor Starters) .....	12
(Three Phase, 220/380/415/460 V, 50/60 Hz, w/ Motor Starters) .....	13
.....	13
<b>Part Numbers</b> .....	<b>14</b>

## Limited Warranty

### LIMITED WARRANTY

Chore-Time Group, a division of CTB, Inc. (“Chore-Time”) warrants new CHORE-TIME CHORE-TIME FLEX-AUGER System Parts and Components manufactured by Chore-Time to be free from defects in material or workmanship under normal usage and conditions, for One (1) year from the date of installation by the original purchaser (“Warranty”). Chore-Time provides for an extension of the aforementioned Warranty period (“Extended Warranty Period”) with respect to certain Product parts. If such a defect is determined by Chore-Time to exist within the applicable period, Chore-Time will, at its option, (a) repair the Product or Component Part free of charge, F.O.B. the factory of manufacture or (b) replace the Product or Component Part free of charge, F.O.B. the factory of manufacture. This Warranty is not transferable, and applies only to the original purchaser of the Product.

### CONDITIONS AND LIMITATIONS

THIS WARRANTY CONSTITUTES CHORE-TIME’S ENTIRE AND SOLE WARRANTY AND CHORE-TIME EXPRESSLY DISCLAIMS ANY AND ALL OTHER WARRANTIES, INCLUDING, BUT NOT LIMITED TO, EXPRESS AND IMPLIED WARRANTIES, INCLUDING, WITHOUT LIMITATION, WARRANTIES AS TO MERCHANTABILITY OR FITNESS FOR PARTICULAR PURPOSES. CHORE-TIME shall not be liable for any direct, indirect, incidental, consequential or special damages which any purchaser may suffer or claim to suffer as a result of any defect in the Product. Consequential or Special Damages as used herein include, but are not limited to, lost or damaged products or goods, costs of transportation, lost sales, lost orders, lost income, increased overhead, labor and incidental costs, and operational inefficiencies. *Some jurisdictions prohibit limitations on implied warranties and/or the exclusion or limitation of such damages, so these limitations and exclusions may not apply to you. This warranty gives the original purchaser specific legal rights. You may also have other rights based upon your specific jurisdiction.*

Compliance with federal, state and local rules which apply to the location, installation and use of the Product are the responsibility of the original purchaser, and CHORE-TIME shall not be liable for any damages which may result from non-compliance with such rules.

The following circumstances shall render this Warranty void:

- Modifications made to the Product not specifically delineated in the Product manual.
- Product not installed and/or operated in accordance with the instructions published by the CHORE-TIME.
- All components of the Product are not original equipment supplied by CHORE-TIME.
- Product was not purchased from and/or installed by a CHORE-TIME authorized distributor or certified representative.
- Product experienced malfunction or failure resulting from misuse, abuse, mismanagement, negligence, alteration, accident, or lack of proper maintenance, or from lightning strikes, electrical power surges or interruption of electricity.
- Product experienced corrosion, material deterioration and/or equipment malfunction caused by or consistent with the application of chemicals, minerals, sediments or other foreign elements.
- Product was used for any purpose other than for the care of poultry and livestock.
- 

The Warranty and Extended Warranty may only be modified in writing by an officer of CHORE-TIME. CHORE-TIME shall have no obligation or responsibility for any representations or warranties made by or on behalf of any distributor, dealer, agent or certified representative.

Effective: **April 2014**

## Safety and General Information

**Caution, Warning and Danger Decals** have been placed on the equipment to warn of potentially dangerous situations. Care should be taken to keep this information intact and easy to read at all times. Replace missing or damaged safety decals immediately.

### Safety–Alert Symbol



**This is a safety–alert symbol.** When you see this symbol on your equipment, be alert to the potential for personal injury. This equipment is designed to be installed and operated as safely as possible...however, hazards do exist.

### Understanding Signal Words

**Signal words** are used in conjunction with the safety–alert symbol to identify the severity of the warning.



**DANGER** indicates an imminently hazardous situation which, if not avoided, **WILL** result in death or serious injury.



**WARNING** indicates a potentially hazardous situation which, if not avoided, **COULD** result in death or serious injury.



**CAUTION** indicates a hazardous situation which, if not avoided, **MAY** result in minor or moderate injury.

### Follow Safety Instructions

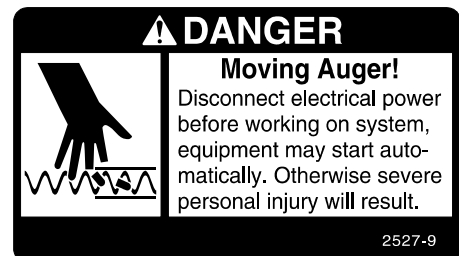
Carefully read all safety messages in this manual and on your equipment safety signs. Follow recommended precautions and safe operating practices.

Keep safety signs in good condition. Replace missing or damaged safety signs.

### Decal Descriptions

#### **DANGER: Moving Auger**

This decal is placed on the End Cap Weldment and Clean-out cover. Severe personal injury will result, if the electrical power is not disconnected, prior to servicing the equipment.



#### **DANGER: Electrical Hazard**

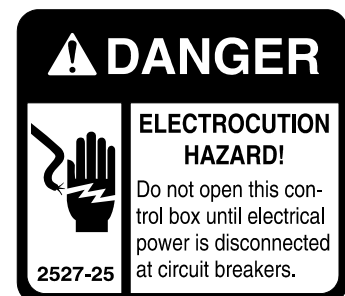
Disconnect electrical power before inspecting or servicing equipment unless maintenance instructions specifically state otherwise.

Ground all electrical equipment for safety.

All electrical wiring must be done by a qualified electrician in accordance with local and national electric codes.

Ground all non-current carrying metal parts to guard against electrical shock.

Electrical disconnects and over current protection are not supplied with the equipment.

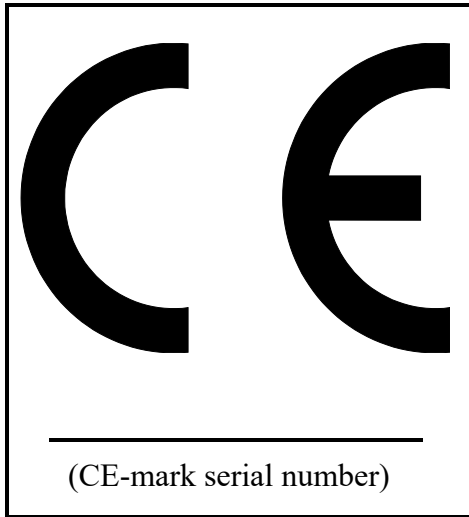


# Support Information

The Chore-Time Extension Hopper is designed to lengthen a Feeding system in a Livestock feeding application. Using this equipment for any other purpose or in a way not within the operating recommendations specified in this manual will void the warranty and may cause personal injury.

This manual is designed to provide comprehensive planning, installation, operation, and parts listing information. The Table of Contents provides a convenient overview of the information in this manual. The Table of Contents also specifies which pages contain information for the sales personnel, installer, and consumer (end user).

Refer to Chore-Time Model 55/75/75 Stainless/75 Plus/75 Plus Stainless/90/HMC Installation Manual for additional installation, operation, and parts listing information.



**IMPORTANT: CE stands for certified Europe.** It is a standard which equipment must meet or exceed in order to be sold in Europe. CE provides a benchmark for safety and manufacturing issues. **CE is required only on equipment sold in Europe.**

Chore-Time Equipment recognizes CE Mark and pursues compliance in all applicable products. *Fill in the CE-Mark serial number in the blank space provided for future reference.*

Please fill in the following information about your Product.  
Keep this manual in a clean, dry place for future reference.

**Distributor's Name** \_\_\_\_\_

**Distributor's Address** \_\_\_\_\_

**Distributor's Phone** \_\_\_\_\_ **Date of Purchase** \_\_\_\_\_

**Installer's Name** \_\_\_\_\_

**Installer's Address** \_\_\_\_\_

**Installer's Phone** \_\_\_\_\_ **Date of Installation** \_\_\_\_\_

**System Specifications** \_\_\_\_\_

## Introduction

The extended length Model 55, 75, 75 Stainless, 75 Plus, 75 Plus Stainless, 90, & HMC FLEX-AUGER Feed Delivery Systems are used to increase the total length of the system in applications where this is required.

The Model 75 Plus/SS System offers Extension Hopper Kits in both Galvanized Steel and Stainless Steel Construction.

The Extension Boot Kits may be used with

**Model 55:** 1/3, and 1/2 H.P. Power Units.

**Model 75/Stainless, 90, and HMC:** 1/2, 3/4, and 1 H.P. Power Units.

**Model 75 Plus/Stainless:** 3/4, 1, and 1-1/2 H.P. Power Units

Maximum lengths for the standard system and Extended Length Systems with various power unit are shown in the chart below.

Motor Size	Model 55		Model 75/SS		Model 75/SS Plus		Model 90		Model HMC	
	Max. Standard	Max. Extension	Max. Standard	Max. Extension	Max. Standard	Max. Extension	Max. Standard	Max. Extension	Max. Standard	Max. Extension
1/3 H.P.	150 Feet (46 M)	185 Feet (56 M)	n/a	n/a	n/a	n/a	n/a	n/a	n/a	n/a
1/2 H.P.	250 Feet (76 M)	285 Feet (87 M)	80 Feet (24 M)	125 Feet (38 M)	n/a	n/a	30 Feet (9 M)	65 Feet (20 M)	30 Feet (9 M)	55 Feet (17 M)
3/4 H.P.	n/a	n/a	150 Feet (46 M)	185 Feet (56 M)	80 Feet (24 M)	125 Feet (38 M)	90 Feet (27 M)	125 Feet (38 M)	90 Feet (27 M)	105 Feet (32 M)
1 H.P.	n/a	n/a	200 Feet (61 M)	245 Feet (75 M)	150 Feet (46 M)	185 Feet (56 M)	150 Feet (46 M)	185 Feet (56 M)	150 Feet (46 M)	185 Feet (56 M)
1-1/2 H.P.	n/a	n/a	n/a	n/a	300 Feet (91 M)	345 Feet (105 M)	n/a	n/a	n/a	n/a

Maximum length recommendations for standard systems include use of two 45 degree elbows. No elbows are included in the recommendations for maximum length of extension systems. If additional elbows are required, decrease the length recommendations by 30 feet (9 m) for each additional 90 degree turn.

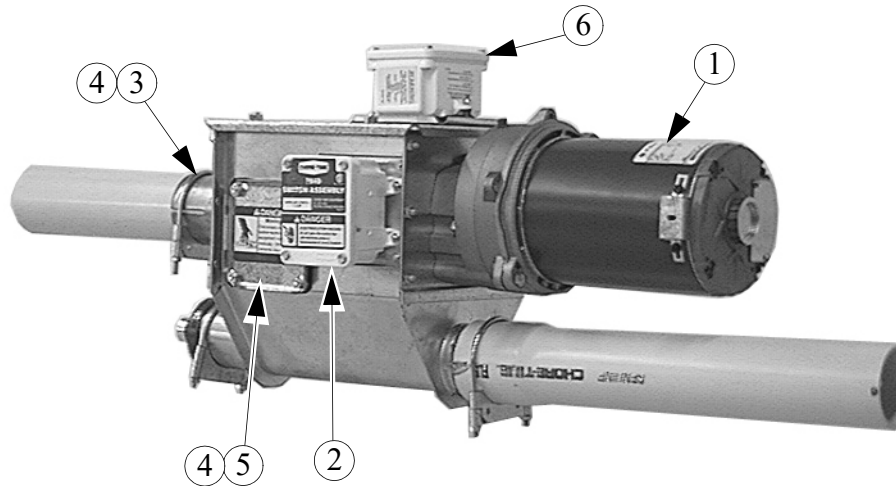
# Planning the Installation

By moving the **Window Plate, Cover Plate, Tube Anchor, Level Switch Assembly, and Power Unit**, it is possible to extend the system in a straight line or use the Extension Boot to replace elbows making a 90 degree turn where that is convenient.

The Safety Switch should be located toward the outlet end of the boot on all applications.

**Figure 1 through Figure 4** show that by moving several components to different locations the Extension Boot may be used to turn right hand, left hand, or extend a straight line system.

## Straight Line Application



		Model 55	Model 90 & HMC	Model 75	Model 75 Stainless	Model 75 Plus	Model 75 Plus Stainless
Key	Description	Part No.					
1	Power Unit	--	--	--	--	--	--
2	Level Switch Assembly	7840	7840	7840	7840SS	7840	7840SS
3	Incoming Tube Anchor	35531	5069	6518	6518SS	6518	6518SS
4	Seal	4873	4873	4873	4873	4873	4873
5	Cover Plate	4878	4878	4878	4878SS	4878	4878SS
6	Safety Switch Assembly	7840	7840	7840	7840SS	7840	7840SS

Figure 1.Side View of Straight Line Application

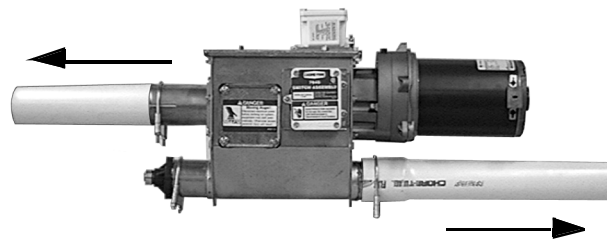
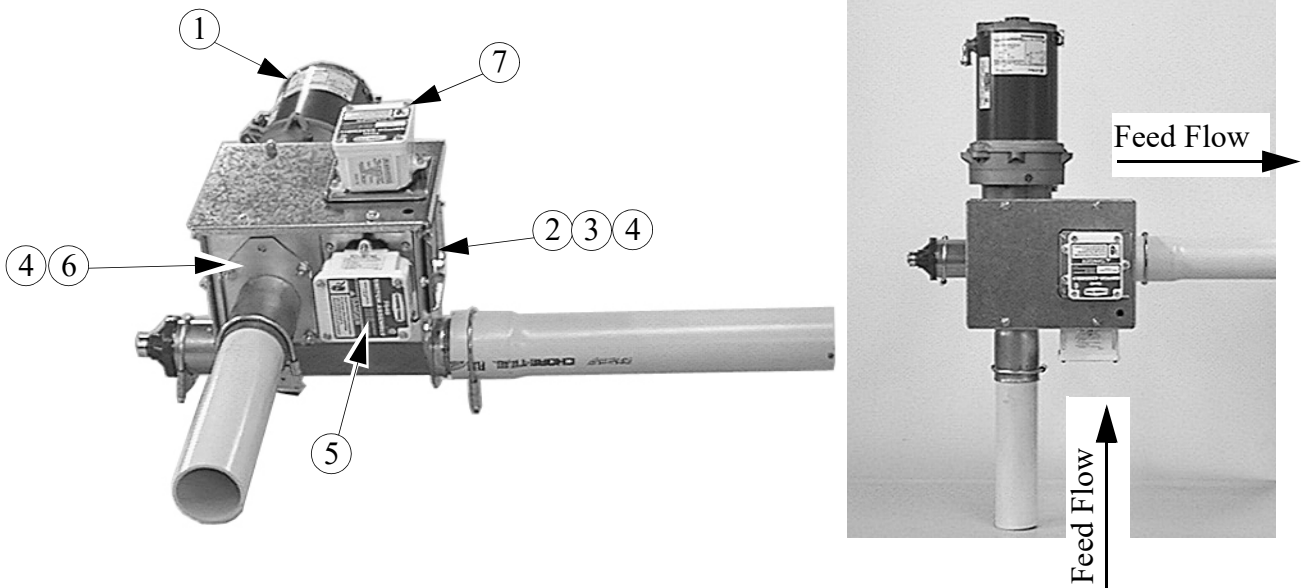


Figure 2.Side View of Straight Line Application (Arrows Indicating Feed Line)

# Right Hand Turn Application



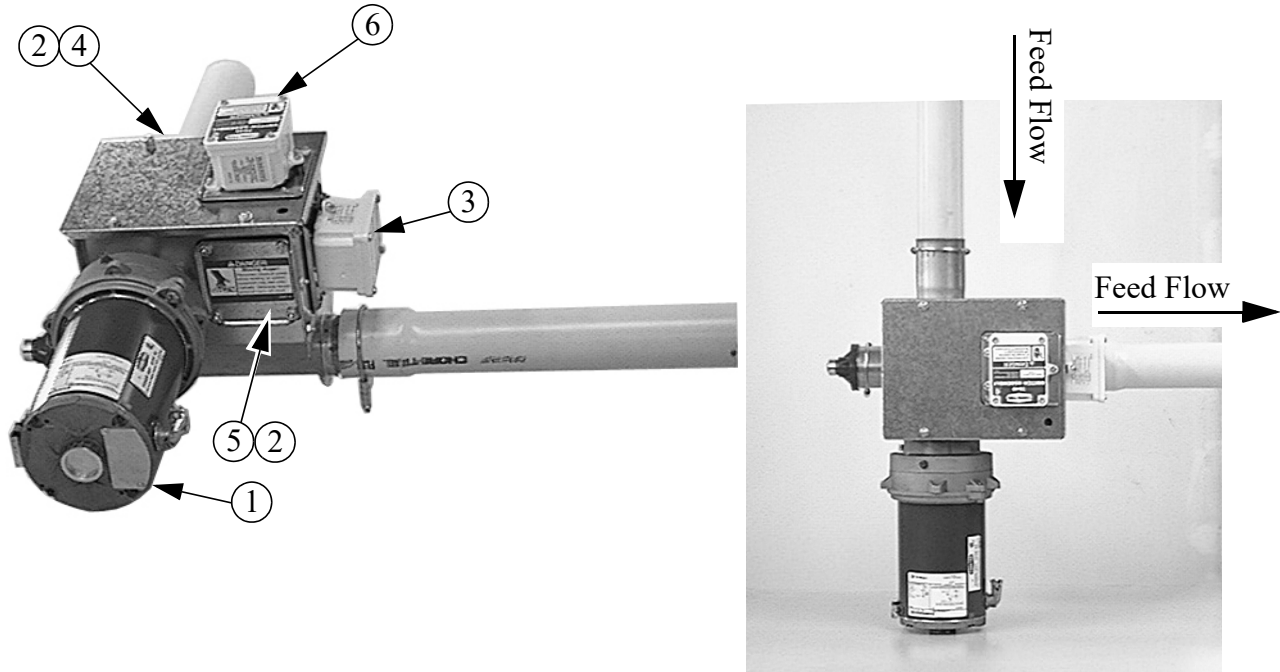
		Model 55	Model 75	Model 90 & HMC	Model 75 Stainless	Model 75 Plus	Model 75 Plus Stainless
Key	Description	Part No.					
1	Power Unit	--		--	--	--	--
2	Window Plate	7842	7842	7842	7842SS	7842	7842SS
3	Window	7852	7852	7852	7852	7852	7852
4	Seal	4873	4873	4873	4873	4873	4873
5	Level Switch Ass'y	7840	7840	7840	7840SS	7840	7840SS
6	Incoming Tube Anchor	35531	6518	5069	6518SS	6518	6518SS
7	Safety Switch Ass'y	7840	7840	7840	7840SS	7840	7840SS

Figure 3.Right Hand Turn Application



### Left Hand Turn Application

The Power Unit will not mount beside the switch (as boot is shipped) for left hand turn applications. Left hand turn applications will require moving the Level Switch to the Access Plate location over the outlet end of the boot as shown in **Figure 4**.



		Model 55	Model 75	Model 90 &HMC	Model 75 Stainless	Model 75 Plus	Model 75 Plus Stainless
Key	Description	Part No.					
1	Power Unit	--	--	--	--	--	--
2	Seal	4873	4873	4873	4873	4873	4873
3	Level Switch Ass'y	7840	7840	7840	7840SS	7840	7840SS
4	Incoming Tube Anchor	35531	6518	5069	6518SS	6518	6518SS
5	Cover Plate	4878	4878	4878	4878SS	4878	4878SS
6	Safety Switch Ass'y	7840	7840	7840	7840SS	7840	7840SS

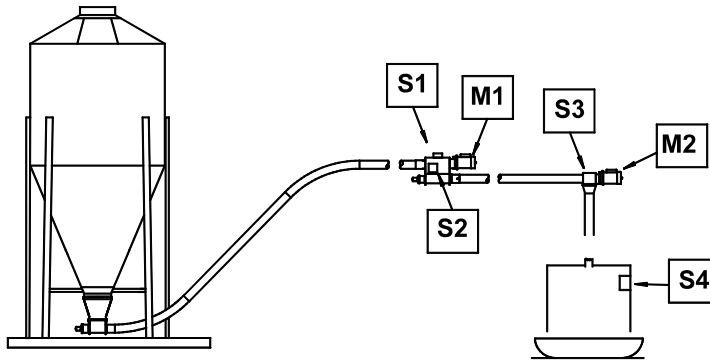
Figure 4.Side View of a Left Hand Application

## Installation Instructions

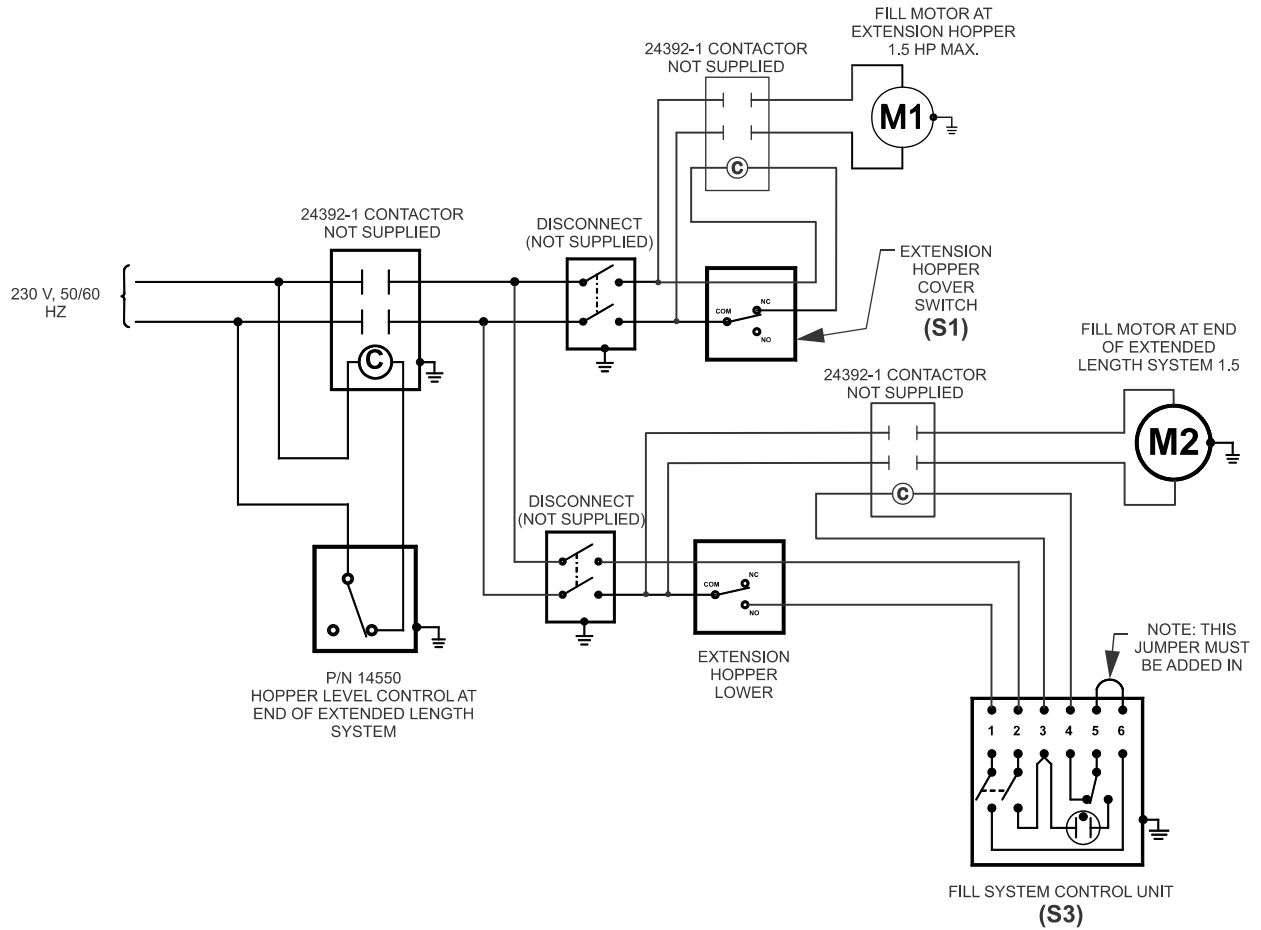
1. Attach the (incoming) Tube Anchor to the Extended Length Boot, using hardware supplied.  
Place a Tube Clamp on the Tube Anchor.
2. Mount the Power Unit on the Boot, using 5/16-18 hardware supplied.
3. The Extension Hopper should be located near the center of the auger line to balance the load on the systems.  
Suspend the Extension Hopper/Power Unit from the ceiling. The Extension Hopper, Power Unit, and feed will weigh approximately 90 pounds (40.1 kg). Adequate support must be provided to prevent sagging at the Extension Hopper location.  
Support the Boot securely, using the “ears” on the Power Unit, chain and screw hooks to suspend the Extension Hopper.
4. Install the incoming and outgoing auger tubes to the Tube Anchor and Boot Anchor on the Extension Hopper.
5. Install the remaining fill system components as specified in the FLEX-AUGER Fill System Manual.
6. A full length Restrictor Tube is provided with the Extension Hopper. The Restrictor Tube may need to be shortened to match the outgoing feed with the incoming feed. Refer to the instructions on shortening the Restrictor in the FLEX-AUGER Fill System Manual.
7. Refer to the wiring diagrams for proper wiring information for the Extension Hopper.

# Wiring

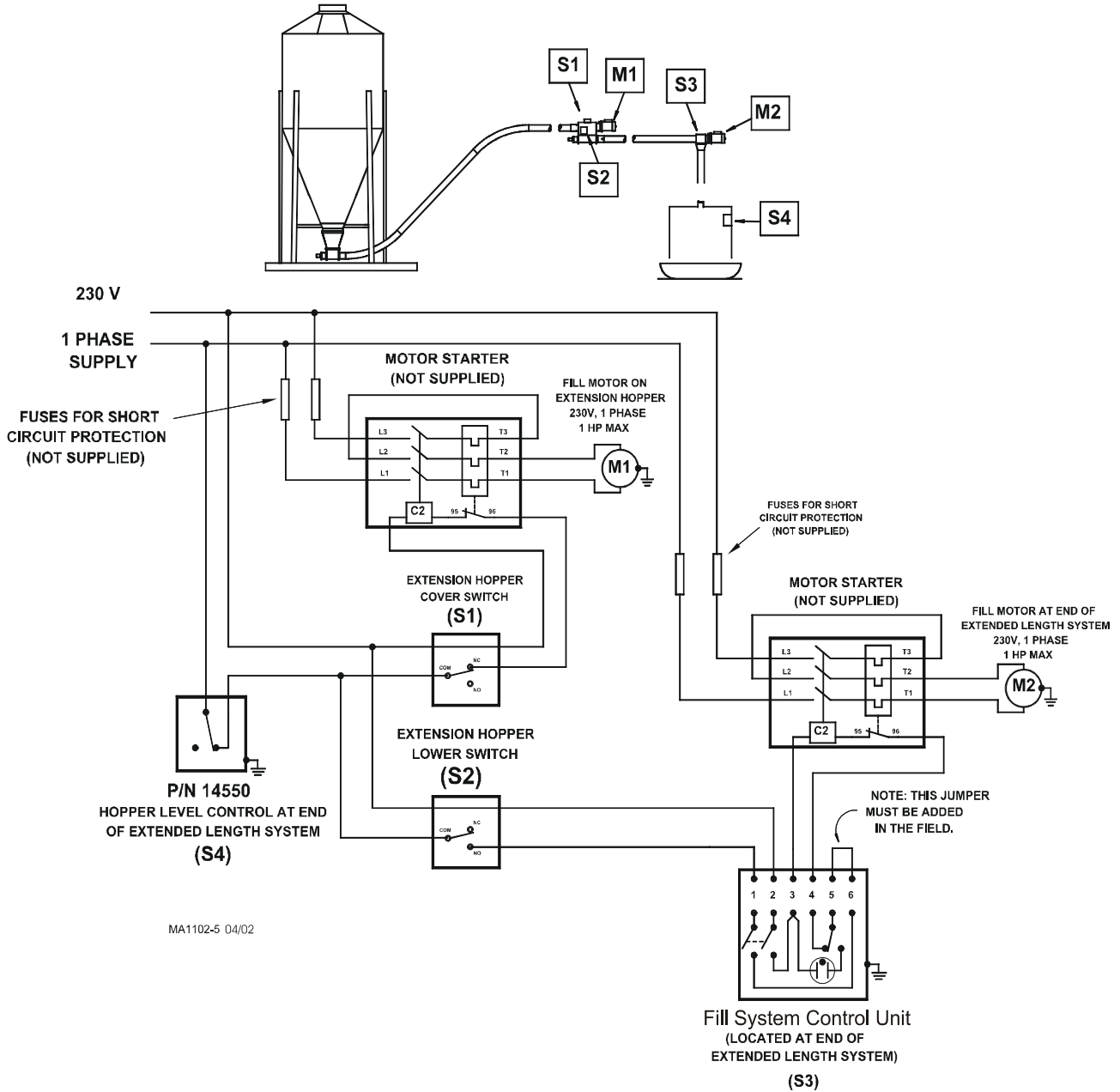
(Single Phase, 230 V, 50/60Hz, w/o Motor Starters)



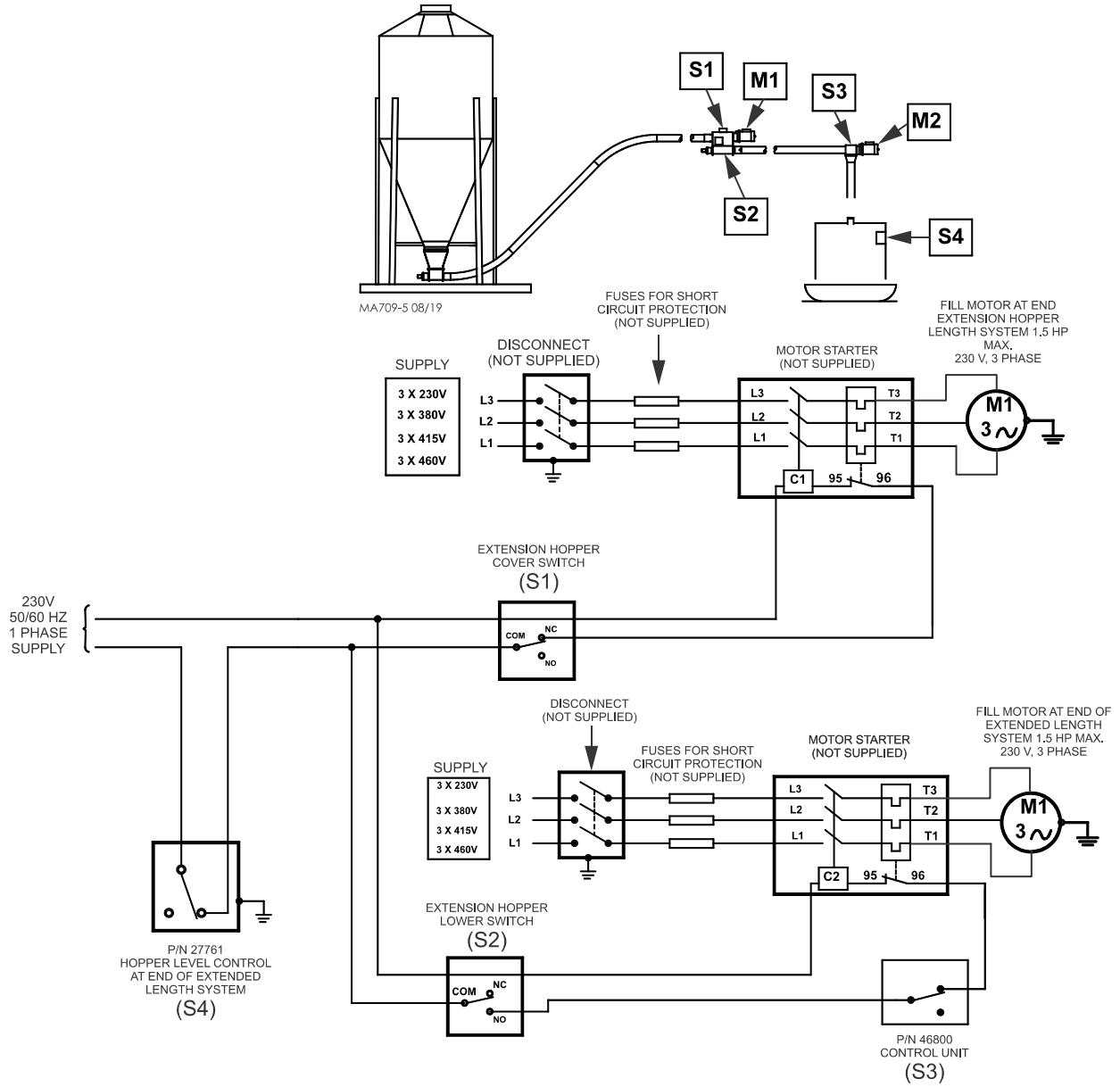
MA709-4 04/02



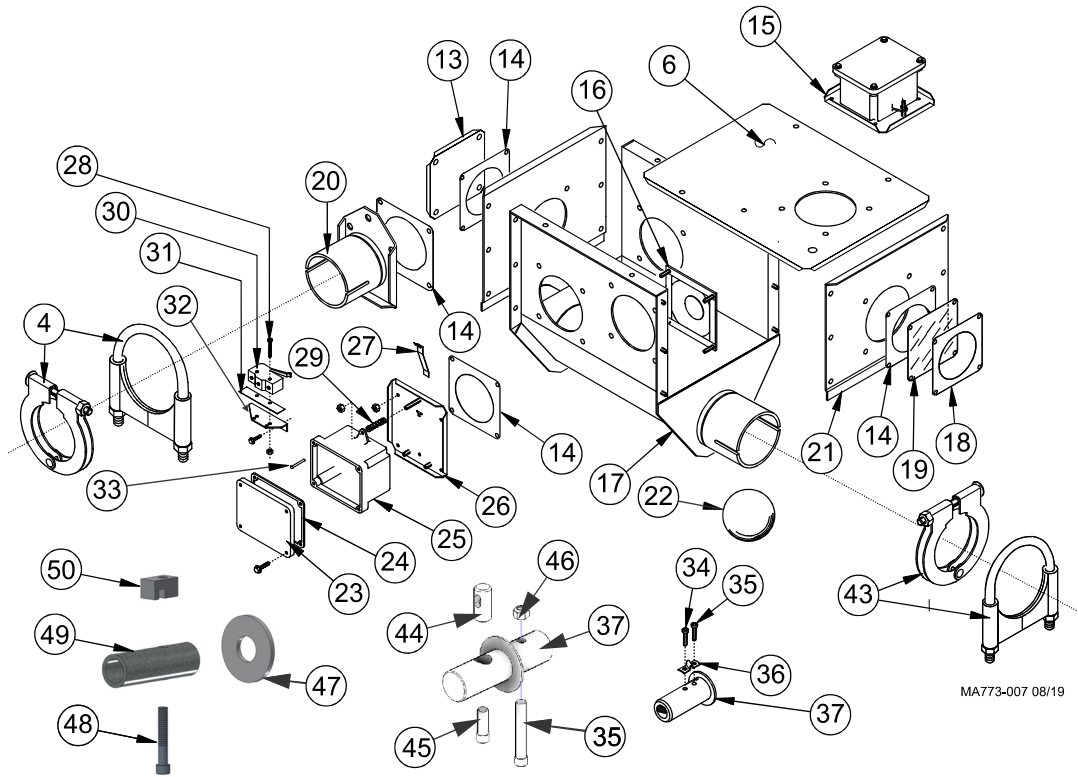
(Single Phase, 230 V, 50/60Hz, w/ Motor Starters)



(Three Phase, 220/380/415/460 V, 50/60 Hz, w/ Motor Starters)



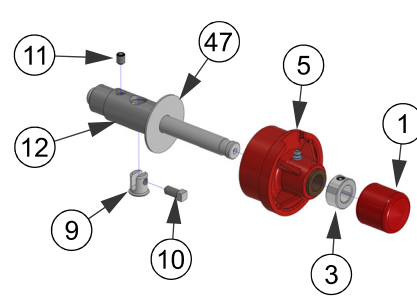
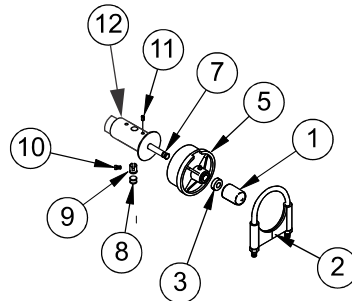
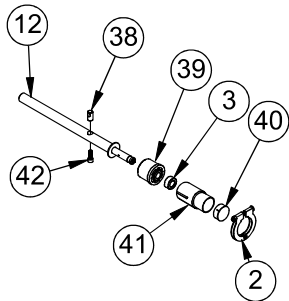
# Part Numbers



Model 55

Model 75, 75 Stainless, 90, & HMC

Model 75 Plus, 75 Plus Stainless



		Model 55 Kit 40170	Model 75 Kit 7944	Model 75 Stainless Kit 7944SS	Model 75 Plus Kit 56471	Model 75 Plus Stainless 56471SS	Model 90 Kit 7869	Model HMC Kit 7849
Key	Description	Part No.						
1*	Safety Cap	--	29702	29702	29702	29702	29702	29702
2	Tube Clamp Kit	29520	4141	4141	4141	4141	6721	6721
3*	5/8" Set Collar	1386	1386	1386	1386	1386	1386	1386
4	Tube Clamp Kit	35726	6515	6515	6515	6515	6721	6721
5*	Bearing Cap Assembly	--	35440	35440	35440	35440	34830	34830
6***	Cover Assembly	7838	7838	7838SS	7838	7838SS	7838	7838
7*	Universal Anchor Shaft	--	43281	43281	43281	43281	43281	43281
8*	Clamp Spacer	--	--	--	--	--	5009	--
9*	Clamp Pin	--	4702	4702	56409	56409	4702	4702
10*	5/16-18 x 1/2" Set Screw	--	5095	5095	5095	5095	5095	5095
11*	5/16-18 x 3/8" Set Screw	--	1174	1174	1174	1174	1174	1174
12*	Anchor Weldment	39410	36393	36393	56387	56387	26048	36393
13	Cover Plate	4878	4878	4878SS	4878	4878SS	4878	4878
14** ***	Seal	4873	4873	4873	4873	4873	4873	4873
15***	Switch and Plate Assembly	7840	7840	7840SS	7840	7840SS	7840	7840
16***	Diaphragm Assembly	7900	7900	7900	7900	7900	7900	7900
17	Boot Body Weld.	40168	7878	7878SS	7878	7878SS	28881	28881
18	Window Plate	7842	7842	7842SS	7842	7842SS	7842	7842
19	Window	7852	7852	7852	7852	7852	7852	7852
20	Tube Anchor Weldment	35531	6518	6518SS	6518	6518SS	5069	5069
21	Access Panel Assembly	7928	7928	7928SS	7928	7928SS	7928	7928
22	Cannonball	3621	3531	3531	3531	3531	3531	3531
23**	Switch Box Cover	6776	6776	6776	6776	6776	6776	6776
24**	Gasket	6777	6777	6777	6777	6777	6777	6777
25**	Switch Box	7841	7841	7841	7841	7841	7841	7841
26**	Switch Mounting Plate	7908	7908	7908SS	7908	7908SS	7908	7908
27**	Paddle	7896	7896	7896	7896	7896	7896	7896
28**	6-32 x 7/8" Pan Hd. Screw	1921	1921	1921	1921	1921	1921	1921
29**	Compression Spring	6972	6972	6972	6972	6972	6972	6972
30**	SPDT Actuator Switch	7114	7114	7114	7114	7114	7114	7114
31**	Switch Insulation	1907-5	1907-5	1907-5	1907-5	1907-5	1907-5	1907-5
32**	Switch Bracket	7068	7068	7068	7068	7068	7068	7068
33**	1/8 x 1" Rd Hd Rivet	8757	8757	8757	8757	8757	8757	8757
34	5/16-18 X 1/2 Socket Hd Screw	--	6850-3	6850-3	6850-3	6850-3	6850-3	6850-3
35	5/16-18 x 2-1/4 Socket Hd Screw	--	6850-4	6850-4	6850-4	6850-4	6850-4	6850-4
36	Anchor Block	--	7703	7703	7703	7703	7703	7703
37	Driver Weldment	--	7704	56390	56390	56390	7706	7704
*38	Auger Clamp (Model 55)	39205	--	--	--	--	--	--
*39	Anchor Bearing (Model 55)	39407	--	--	--	--	--	--
40	Cap (Model 55)	29523	--	--	--	--	--	--
41	Stub Tube (Model 55)	4163	--	--	--	--	--	--
*42	Socket Head Screw (Model 55)	6850-7	--	--	--	--	--	--
43	Tube Clamp Kit	29515	6515	6515	6515	6515	6721	6721
44	Auger Clamp Pin	--	--	--	56405	56405	--	--
45	5/16-18 x 1" Socket Hd Screw	--	--	--	6850-5	6850-5	--	--
46	5/16-18 Hex Lock Nut	--	--	--	2148	2148	--	--
47*	.688 x 1.750 x .134 Washer	1484	--	--	--	--	--	--
48*	1/4-20 x 1.50 Sk. Hd Cap Screw	5083-8	--	--	--	--	--	--
49*	Driver Tube	2920	--	--	--	--	--	--
50*	Driver Block	4642	--	--	--	--	--	--

\*These Anchor and Bearing Components may be ordered as complete Assemblies under the following Part Numbers:  
 Model 55 (39405), Model 75/SS (37347), Model 75 Plus/SS (56417), Model 90 (35345), Model HMC (37241)

\*\*These Switch and Plate components may be ordered as an assembly under Chore-Time part number #7840/SS

\*\*\*The #7839/SS Cover Assembly includes items 6, 14, 15, and 16 and the required hardware.



**MADE TO WORK.  
BUILT TO LAST.®**

**Revisions to this Manual**

<b>Page No.</b>	<b>Description of Change</b>	<b>ECO</b>
Various	Added 75 Stainless, 75 Plus, and 75 Plus Stainless	34341

**For additional parts and information, contact your nearest Chore-Time distributor or representative.  
Find your nearest distributor at: [www.choretime.com/contacts](http://www.choretime.com/contacts)**

Chore-Time Group, A division of CTB, Inc.  
PO Box 2000  
Milford, Indiana 46542-2000 USA  
Phone (574) 658-4101 Fax (877) 730-8825  
Email: [choretime@choretime.com](mailto:choretime@choretime.com)  
Internet: [www.choretime.com](http://www.choretime.com)