

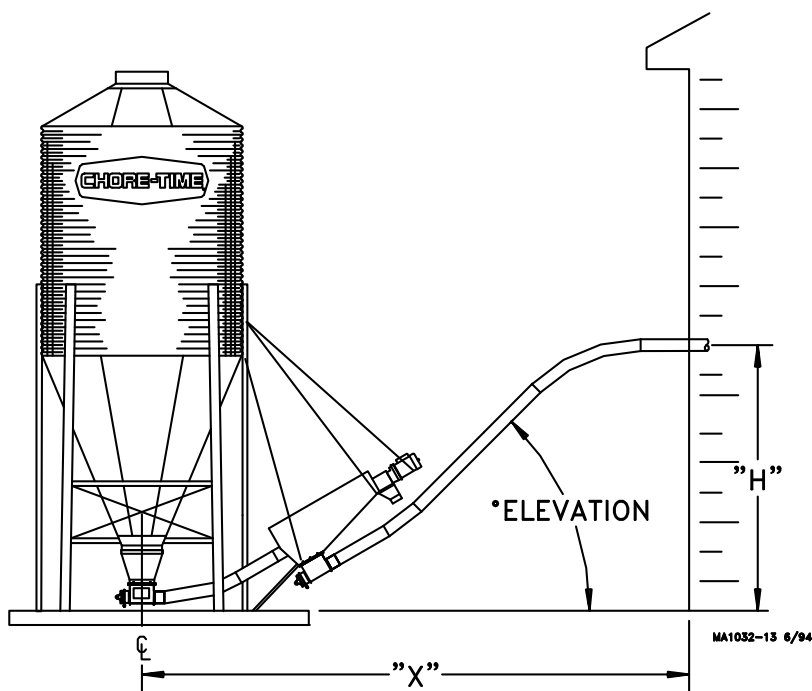
# Feed Screener

Model 90 & Model 108

Single and Dual

Installation & Operator's Manual

warranty • installation • operation •  
parts list • maintenance



## **WARRANTY INFORMATION**

Chore-Time Group, a division of CTB, Inc. ("Chore-Time") warrants new Feed Screeners manufactured by Chore-Time to be free from defects in material or workmanship under normal usage and conditions, for One (1) year from the date of installation by the original purchaser ("Warranty"). If such a defect is determined by Chore-Time to exist within the applicable period, Chore-Time will, at its option, (a) repair the Product or Component Part free of charge, F.O.B. the factory of manufacture or (b) replace the Product or Component Part free of charge, F.O.B. the factory of manufacture. This Warranty is not transferable, and applies only to the original purchaser of the Product.

### **CONDITIONS AND LIMITATIONS**

THIS WARRANTY CONSTITUTES CHORE-TIME'S ENTIRE AND SOLE WARRANTY AND CHORE-TIME EXPRESSLY DISCLAIMS ANY AND ALL OTHER WARRANTIES, INCLUDING, BUT NOT LIMITED TO, EXPRESS AND IMPLIED WARRANTIES, INCLUDING, WITHOUT LIMITATION, WARRANTIES AS TO MERCHANTABILITY OR FITNESS FOR PARTICULAR PURPOSES. CHORE-TIME shall not be liable for any direct, indirect, incidental, consequential or special damages which any purchaser may suffer or claim to suffer as a result of any defect in the Product. Consequential or Special Damages as used herein include, but are not limited to, lost or damaged products or goods, costs of transportation, lost sales, lost orders, lost income, increased overhead, labor and incidental costs, and operational inefficiencies. *Some jurisdictions prohibit limitations on implied warranties and/or the exclusion or limitation of such damages, so these limitations and exclusions may not apply to you. This warranty gives the original purchaser specific legal rights. You may also have other rights based upon your specific jurisdiction.*

Compliance with federal, state and local rules which apply to the location, installation and use of the Product are the responsibility of the original purchaser, and CHORE-TIME shall not be liable for any damages which may result from non-compliance with such rules.

The following circumstances shall render this Warranty void:

- Modifications made to the Product not specifically delineated in the Product manual.
- Product not installed and/or operated in accordance with the instructions published by the CHORE-TIME.
- All components of the Product are not original equipment supplied by CHORE-TIME.
- Product was not purchased from and/or installed by a CHORE-TIME authorized distributor or certified representative.
- Product experienced malfunction or failure resulting from misuse, abuse, mismanagement, negligence, alteration, accident, or lack of proper maintenance, or from lightning strikes, electrical power surges or interruption of electricity.
- Product experienced corrosion, material deterioration and/or equipment malfunction caused by or consistent with the application of chemicals, minerals, sediments or other foreign elements.
- Product was used for any purpose other than for the care of poultry and livestock.

The Warranty and Extended Warranty may only be modified in writing by an officer of CHORE-TIME. CHORE-TIME shall have no obligation or responsibility for any representations or warranties made by or on behalf of any distributor, dealer, agent or certified representative.

Effective: **April, 2014**

Chore-Time Group  
A division of CTB, Inc.  
PO Box 2000  
Milford, Indiana 46542-2000 USA  
Phone (574) 658-4101 Fax (877) 730-8825  
E-mail: [www.choretimepoultry.com](http://www.choretimepoultry.com)  
Internet: [poultry@choretime.com](mailto:poultry@choretime.com)

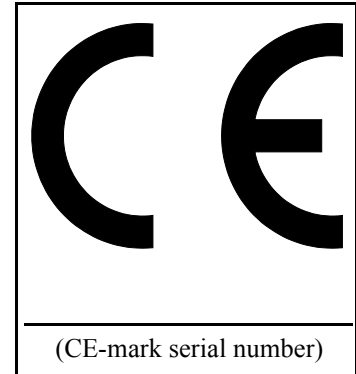
## *Support Information*

The Feed Screener is designed to remove foreign material, including shelled corn, from poultry feed. Using this equipment for any other purpose or in a way not within the operating recommendations specified in this manual will void the warranty and may cause personal injury and/or death.

This manual is designed to provide comprehensive planning, installation, wiring, operation, and parts listing information. The Table of Contents provides a convenient overview of the information in this manual. The Table of Contents also specifies which pages contain information for the sales personnel, installer, and consumer (end user).

**IMPORTANT:** CE represents *certified Europe*. It is a standard which equipment must meet or exceed in order to be sold in Europe. CE provides a benchmark for safety and manufacturing issues. CE is required only on equipment sold in Europe.

Chore-Time Equipment recognizes CE Mark and pursues compliance in all applicable products. Fill in the CE-Mark serial number in the blank space provided for future reference.



**Please fill in the following information about your Feed Screener. Keep this manual in a clean, dry place for future reference.**

**Distributor's Name** \_\_\_\_\_

**Distributor's Address** \_\_\_\_\_

**Distributor's Phone** \_\_\_\_\_ **Date of Purchase** \_\_\_\_\_

**Installer's Name** \_\_\_\_\_

**Installer's Address** \_\_\_\_\_

**Installer's Phone** \_\_\_\_\_ **Date of Installation** \_\_\_\_\_

**System Specifications** \_\_\_\_\_

**Feed Delivery System Supplying** \_\_\_\_\_

### *Tools needed to install your Feed Screener include:*

1. Regular Screwdriver
2. Allen Wrenches
3. Box-End Wrenches
4. Drive Ratchet and Sockets
5. Locking Pliers
6. File
7. Bolt Cutters or Hack Saw
8. Wire Cutters
9. Wire Strippers
10. Adequate Size and Quantity of Electrical Wire
11. Electrical Drill and Drill Bits
12. Abrasive Cut-off Saw
13. Another person to help!!

## *Table of Contents*

<u>Topic</u>	<u>Page</u>
Warranty Information.....	2
Support Information.....	3
Safety Information .....	5
Introduction.....	6
Planning the Installation .....	6-7
Screener Assembly and Installation .....	10-19
Model 90 and Model 108 Screener Assembly Procedure.....	11
Dual Model 90 and Model 108 Screener Assembly Procedure .....	12-13
Screener Bracing .....	14-15
Screener Installation .....	16-18
Wiring Diagram for Model 90 & Model 108 Screeners .....	20
Wiring Diagram for Dual Model 90 Screeners .....	20
Parts List .....	21-30
Model 90 & Model 108 Screeners.....	21
Dual Model 90 & Model 108 Screener .....	22
Junction Box Assembly .....	23
Dual Model 90 & Model 108 Screener Support Kit .....	25
Lower Hopper Switch.....	26
Screener Control Unit (for standard Model 90 & Model 108 Screeners).....	27
Power Units.....	28
Model 90 & Model 108 Driver Assembly .....	27
Model 90 Screener Boot Assembly .....	28
Model 108 Screener Boot Assembly.....	29
Dual Model 90 Screener Boot Assembly .....	30

### *Related Instruction Manuals*

### *Inst.No.*

Two Motor Tandem System Manual (Model 90)	MA524
Two Motor Tandem System Manual (Model 108)	MA1101
Model 55, 75, 90, & HMC FLEX-AUGER Fill System Manual	MA1702
Model 108 FLEX-AUGER Fill System Manual	MA1714
Dead End Fill System Manual	MC1090
ULTRAFLO Loop Fill System Manual	MC1091
ULTRAFLO Feeding System Manual	MC656

Note: Some of the instructions listed above are available in various languages. Contact your CHORE-TIME Distributor for additional manuals.

# ***SAFETY INFORMATION***

Caution, Warning and Danger Decals have been placed on the equipment to warn of potentially dangerous situations. Care should be taken to keep this information intact and easy to read at all times. Replace missing or damaged safety signs.

Using the equipment for purposes other than specified in this manual may cause personal injury or damage to the equipment.

## **Safety–Alert Symbol**

This is a safety–alert symbol. When you see this symbol on your equipment, be alert to the potential for personal injury. Chore-Time equipment is designed to be installed and operated as safely as possible...however, hazards do exist.



## **Signal Words**

Signal words are used in conjunction with the safety–alert symbol to identify the severity of the warning.

DANGER ..... indicates an imminently hazardous situation which, if not avoided, WILL result in death or serious injury.

WARNING ..... indicates a potentially hazardous situation which, if not avoided, COULD result in death or serious injury.

CAUTION ..... indicates a hazardous situation which, if not avoided, MAY result in minor or moderate injury.



**DANGER**



**WARNING**

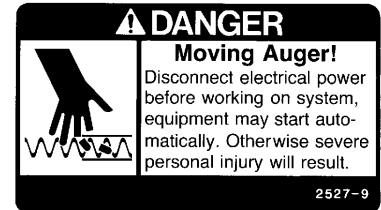


**CAUTION**

## **DANGER: MOVING AUGER**

This decal is placed on the Clean-Out Cover of the FLEX-AUGER Control Unit.

Severe personal injury will result, if the electrical power is not disconnected, prior to servicing the equipment.



## **DANGER: ELECTRICAL HAZARD**

Disconnect electrical power before inspecting or servicing equipment unless maintenance instructions specifically state otherwise.

Ground all electrical equipment for safety.

All electrical wiring must be done by a qualified electrician in accordance with local and national electric codes.

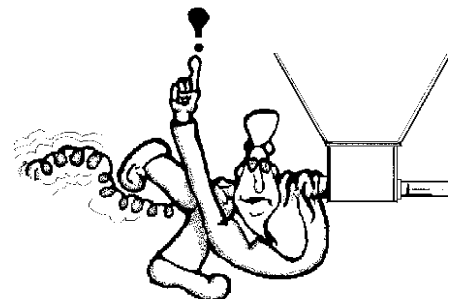
Ground all non-current carrying metal parts to guard against electrical shock.

With the exception of motor overload protection, electrical disconnects and over current protection are not supplied with the equipment.



**CAUTION**

Use caution when working with the Auger--springing auger may cause personal injury.



## *Introduction*

The Feed Screeners are used with FLEX-AUGER® Feed Delivery Systems to remove foreign materials that may get caught and plug the feeding system.

Chore-Time manufactures four different Feed Screeners for use in ULTRAFLO® cage feeding Installations.

The standard Model 90 Feed Screener is used in application requiring 100 lbs. (45 kg) or less feed delivery per minute.\*

The Dual Model 90 Feed Screener is used in applications requiring 100 to 200 lbs. (45 to 90 kg) of feed delivery per minute.\*

The Model 108 Feed Screener is used in applications requiring 220 to 250 lbs. (100 to 113 kg) of feed delivery per minute.\*

The Dual Model 108 Feed Screener is used in applications requiring 440 to 500 lbs. (45 to 90 kg) of feed delivery per minute.\*

\*The figures, above, are based on 40 lb/cu. ft. (640 kg/cu. meter) feed density.

The Feed Screener may be used with either 30° Boots or Straight-out Boots. It may be installed so that the Auger Tubes run from the bin to the building in a straight line. Alternatively, the Boot on the Screener may be turned 90 degrees so that the Auger Tubes going into the building are perpendicular to the Auger Tube from the feed bin to the Screener.

The Feed Screener components must be assembled in the field. The Feed Screener consists of;

- (1) Screener Hopper Assembly,
- (1) Screener Boot Assembly,
- (1) Screener Cover Assembly,
- (1) Screener Support Kit (for Dual Model 90 & 108 systems only),
- (1) Drop Tube (for standard Model 90 & 108 systems only), and
- (1) or (2) Control Unit(s).

The Feed Screeners require 3/4 H.P. Power Units

The Screener Power Units must be ordered separately.

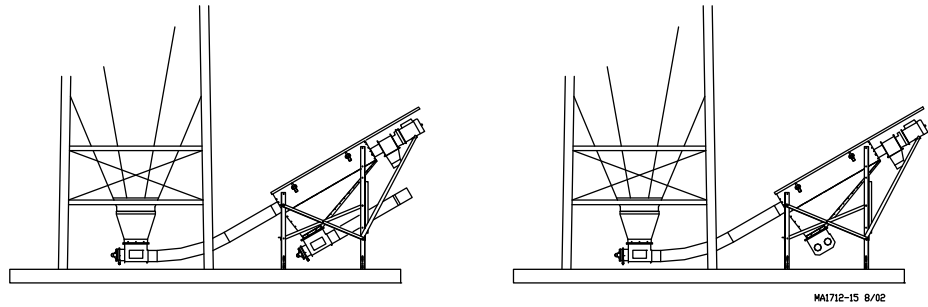
## *Planning the Installation*

**Carefully review each of the Figures listed below. They will assist you in planning and installing the Feed Screener.**

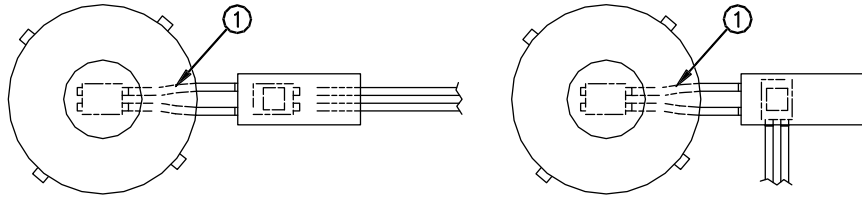
Figure 1 is a Dual Model 90 & 108 Screener component layout diagram.

Figure 2 is a Model 90 & Model 108 Screener component layout diagram.

Figures 3 through 6 provide Feed Screener-to-building dimensional information with various boot configurations, degrees of elevation, screener directions, and entrance heights.

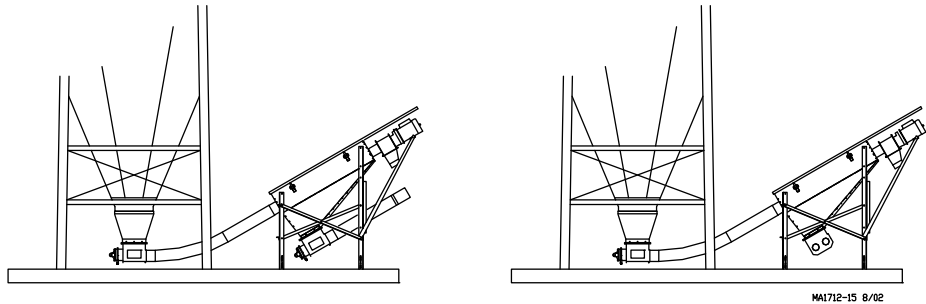


MA1712-15 8/02



Key	Description
1	Additional Elbows Required Here

Figure 1. Dual Model 90 & 108 Feed Screener Layout Diagram



MA1712-15 8/02

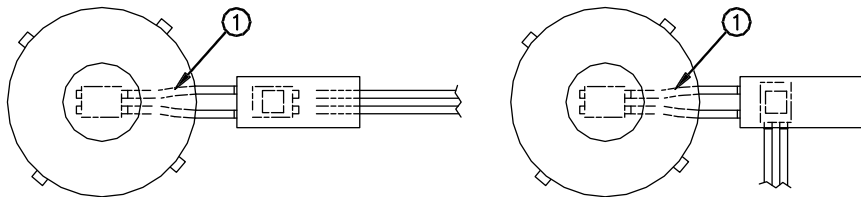


Figure 2. Model 90 & 108 Feed Screener Layout Diagram

## FLEX-AUGER Planning Chart for systems with Screeners (In-line & Rotated)

Chart for minimum distances ("X") from building to center of bin using the various entrance heights ("H"), upper boots and elevations listed below.

System Model	Entrance Height "H"	Dimension "X" (for syst. using 30° Upper Boot)		Dimension "X" (for syst. using Straight-Out Upper Boot)		
		30 Degree	45 Degree	30 Degree	45 Degree	
Std. Model 90 & 108, Dual Model 90 & 108 using screener. Screener Boot is in-line with system.	5' (1.5 m)	12.5' (3.8 m)	11.5' (3.5 m)	15' (4.6 m)	14' (4.3 m)	
	6' (1.8 m)	14' (4.3 m)	12.5' (3.8 m)	16.5' (5 m)	15' (4.6 m)	
	7' (2.1 m)	16' (4.9 m)	13.5' (4.1 m)	18.5' (5.6 m)	16' (4.9 m)	
	8' (2.4 m)	17.5' (5.3 m)	14.5' (4.4 m)	20' (6 m)	17' (5.2 m)	
	9' (2.7 m)	19.5' (5.9 m)	15.5' (4.7 m)	22' (6.7 m)	18' (5.5 m)	
	10' (3 m)	21' (6.4 m)	16.5' (5 m)	23.5' (7.1 m)	19' (5.8 m)	
	11' (3.4 m)	23' (7 m)	17.5' (5.3 m)	25.5' (7.7 m)	20' (6 m)	
	12' (3.6 m)	24.5' (7.4 m)	18.5' (5.6 m)	27' (8.2 m)	21' (6.4 m)	
	13' (4 m)	26.5' (8 m)	19.5' (5.9 m)	29' (8.8 m)	22' (6.7 m)	
	14' (4.3 m)	28' (8.5 m)	20.5' (6.2 m)	30.5' (9.2 m)	23' (7 m)	
	15' (4.6 m)	29.5' (8.9 m)	21.5' (6.5 m)	32.5' (9.9 m)	24' (7.3 m)	
	16' (4.9 m)	31.5' (9.6 m)	22.5' (6.8 m)	34' (10.3 m)	25' (7.6 m)	
	17' (5.2 m)	33' (10 m)	23.5' (7.1 m)	35.5' (10.8 m)	26' (7.9 m)	
	18' (5.5 m)	35' (10.6 m)	24.5' (7.4 m)	37.5' (11.4 m)	27' (8.2 m)	
	19' (5.8 m)	36.5' (11.1 m)	25.5' (7.7 m)	39' (11.8 m)	28' (8.5 m)	
	20' (6 m)	38.5' (11.7 m)	26.5' (8 m)	41' (12.4 m)	29' (8.8 m)	
	Std. Model 90 & 108, Dual Model 90 & 108 using screener. Screener Boot is rotated 90 degrees to system.	5' (1.5 m)	11' (3.3 m)	9.5' (2.8 m)	11' (3.3 m)	9.5' (2.8 m)
		6' (1.8 m)	13' (4 m)	10.5' (3.2 m)	13' (4 m)	10.5' (3.2 m)
		7' (2.1 m)	14.5' (4.4 m)	11.5' (3.5 m)	14.5' (4.4 m)	11.5' (3.5 m)
		8' (2.4 m)	16' (4.8 m)	12.5' (3.8 m)	16' (4.9 m)	12.5' (3.8 m)
9' (2.7 m)		18' (5.5 m)	13.5' (4.1 m)	18' (5.5 m)	13.5' (4.1 m)	
10' (3 m)		19.5' (5.9 m)	14.5' (4.4 m)	19.5' (5.9 m)	14.5' (4.4 m)	
11' (3.3 m)		21.5' (6.5 m)	15.5' (4.7 m)	21.5' (6.5 m)	15.5' (4.7 m)	
12' (3.6 m)		23' (7 m)	16.5' (5 m)	23' (7 m)	16.5' (5 m)	
13' (4 m)		25' (7.6 m)	17.5' (5.3 m)	25' (7.6 m)	17.5' (5.3 m)	
14' (4.2 m)		26.5' (8 m)	18.5' (5.6 m)	26.5' (8 m)	18.5' (5.6 m)	
15' (4.6 m)		28.5' (8.6 m)	19.5' (5.9 m)	28.5' (8.6 m)	19.5' (5.9 m)	
16' (4.9 m)		30' (9.1 m)	20.5' (6.2 m)	30' (9.1 m)	20.5' (6.2 m)	
17' (5.2 m)		32' (9.7 m)	21.5' (6.5 m)	32' (9.7 m)	21.5' (6.5 m)	
18' (5.5 m)		33.5' (10.2 m)	22.5' (6.8 m)	33.5' (10.2 m)	22.5' (6.8 m)	
19' (5.8 m)		35.5' (10.8 m)	23.5' (7.1 m)	35.5' (10.8 m)	23.5' (7.1 m)	
20' (6.1 m)		37' (11.2 m)	24.5' (7.4 m)	37' (11.2 m)	24.5' (7.4 m)	

**Use this diagram and chart to determine proper feed bin placement when using screener.**

"X" = distance from center of bin to the height fill system enters the building.

"H" = height from top of bin pad to where fill system enters the building.

Degree of elevation = Angle at which the system is installed (from horizontal).

System shown with screener boot installed in-line.  
System may also be installed with the screener boot rotated 90 degrees in either direction.

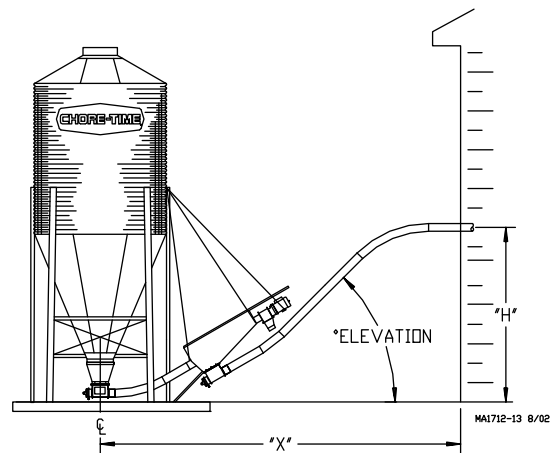


Figure 3. Feed Screener Layout Diagram



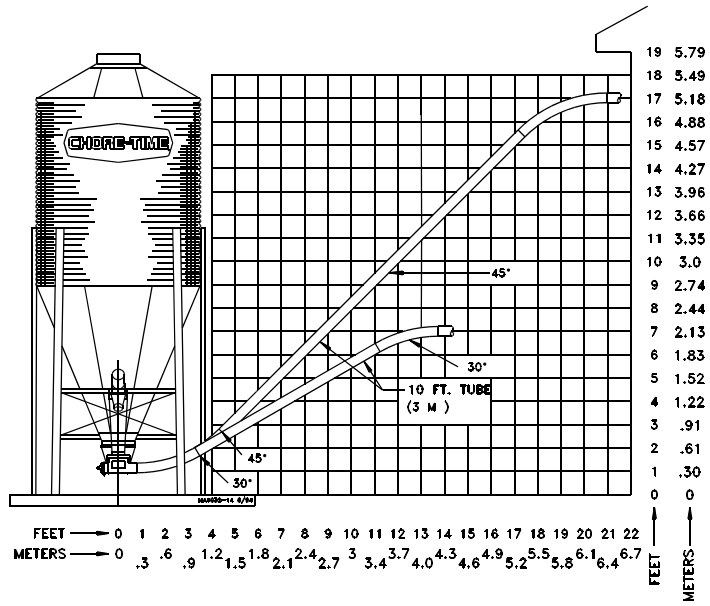


Figure 4. 30° or Straight-Out Bin Boot with Feed Screener Boot rotated 90°.

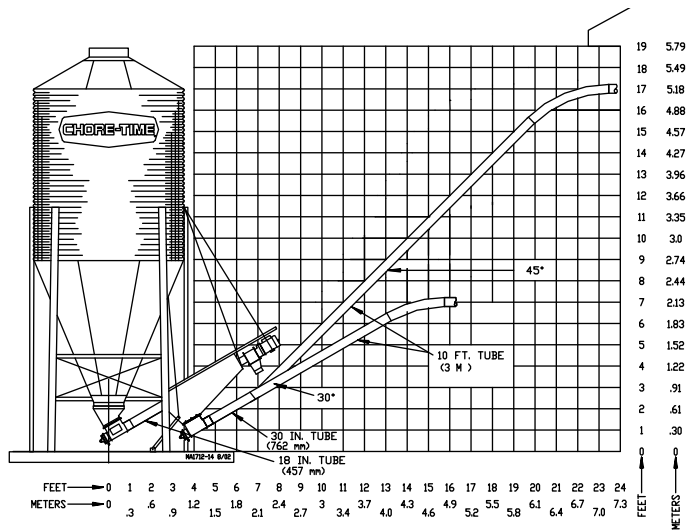


Figure 5. 30° Bin Boot with Feed Screener Boot in-line.

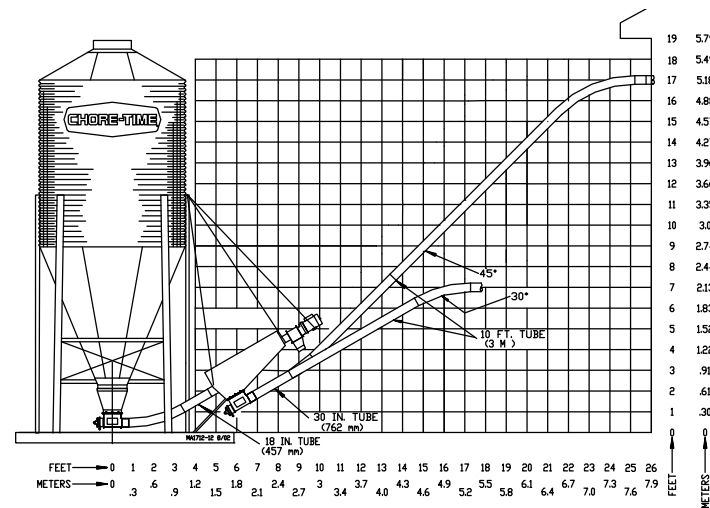


Figure 6. Straight-Out Bin Boot with Feed Screener Boot in-line.

# *Screeners Assembly & Installation*

Note: The Model 90 and Model 108 installation procedure is described Steps 1 through 3

The Dual Model 90 & 108 installation procedure is described in Steps 1 through 6, on pages 12 - 13, **Figure 8**.

## **Model 90 and Model 108 Screeners**

**Refer to the Parts Breakdown on Adjacent page.**

1. Assemble the Inlet Tube Anchor (**Item 1**) & Seal (**Item 2**) (packed with the Control Unit), on the incoming end of the Screener Body (**Item 3**), as shown in Figure 7. Hardware is provided.
2. Bolt the Transfer Plate (**Item 6**) to the Screener Body, using 5/16-18 hardware supplied. Bolt the Boot Assembly (**Item 7**) to the Transfer Plate, as shown, using 5/16-18 hardware supplied.
3. Fasten the Control Unit Assembly (**Item 5**) in place using the hardware supplied.

**Should it become necessary to re-install the Screens follow these steps.**

1. Install the Screens (**Item 15**) on the flanges of the Extruded Plate Weldments (**Item 18**). Position the Screen seam at 30° C.C.W rotation from horizontal when facing the inlet end and secure both ends with Adjustable Clamps (**Item 17**).
2. Install the Screen Retainers (**Item 16**) on the seams of the two Screens. Use the Adjustable Clamps to secure the Screen Retainers in place and to bring the Screens into proper roundness. They should be tightened enough to allow the Auger to move freely inside the Screens. Do not overtighten the Clamps.

Each of the four Clamps should be positioned approximately 1.5" [3.8cm] from the end of the model 90 Screen Retainers (**See Figure 7**).

# Model 90 and 108 Screener

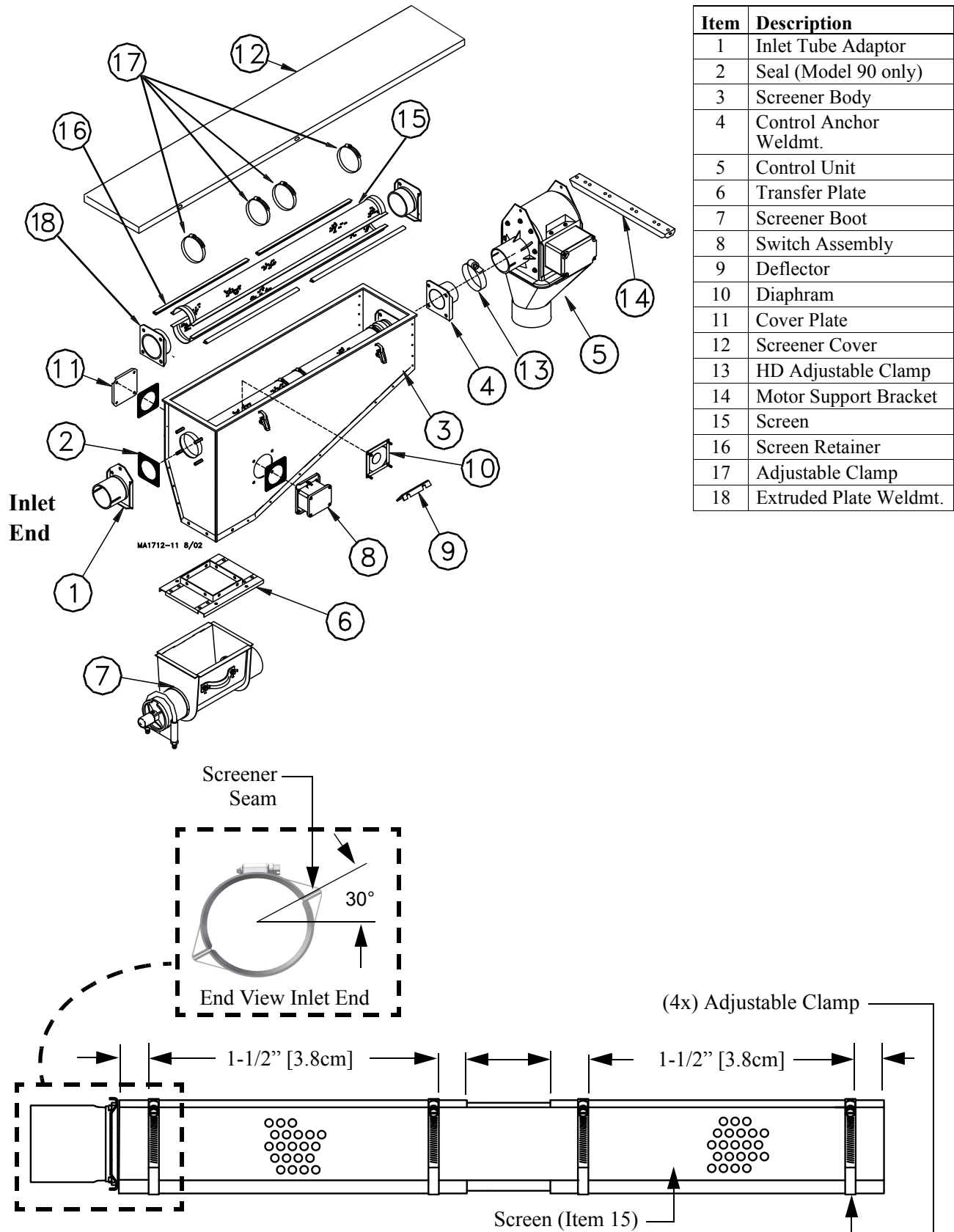


Figure 7. Model 90 and Model 108 Screener Assembly Procedure.

## Dual Model 90 & 108 Screeners

See Figure 8 on adjacent page for steps 1 through 6.

For Model 108 Screeners skip to step 4.

1. Install the Inlet Tube Adapters (**Item 13**), Seals (**Item 11**), and Extruded Plate Weldments (**Item 15**) on the inlet end of the Screener, using the 5/16-18 hardware supplied.
2. Install the Extruded Plate Weldments and Control Anchor Weldments (**Item 5**) on the outlet end of the Screener, using 5/16-18 hardware supplied.
3. Model 90 Screens are shipped in halves (**Item 1**) and must be assembled. Install the Screens on the flanges of the Extruded Plates (**Item 15**). Position the Screen seam at 30° C.C.W rotation from horizontal when facing the inlet end and secure both ends with Adjustable Clamps (**Item 17**).

Install the Screen Retainers (**Item 16**) on the seams of the two Screens. Use the Adjustable Clamps to secure the Screen Retainers in place and to bring the Screens into proper roundness. They should be tightened enough to allow the Auger to move freely inside the Screens. Do not overtighten the Clamps.

Each of the four Clamps should be positioned approximately 1.5" [3.8cm] from the end of the model 90 Screen Retainers (**See Figure 8**).

4. Bolt the Transfer Plate to the Screener Body (**Item 6**), as shown, using 5/16-18 hardware supplied.

Bolt the Boot Assembly to the Transfer Plate (**Item 12**) using 5/16-18 hardware supplied. Make sure the outlet end of the Boot is toward the direction of the Auger Tubes.

5. Fasten the Control Unit Assemblies in place with a Heavy Duty Adjustable Clamp supplied.

NOTE: The Safety Switch Boxes on each Control Unit will be toward the outside.

6. Install the (2) Switches on the Screener Hopper Body, **as shown**.

Switch openings (holes) are provided in the lower section of the Screener Body.

The Diaphragm and Deflector are to be located **inside** the Hopper Body with the press studs extending out through the holes.

The Switch and Seal are located **outside** the Hopper Body, secured by the press studs and hardware supplied.

## (Dual) Model 90 and 108 Screener

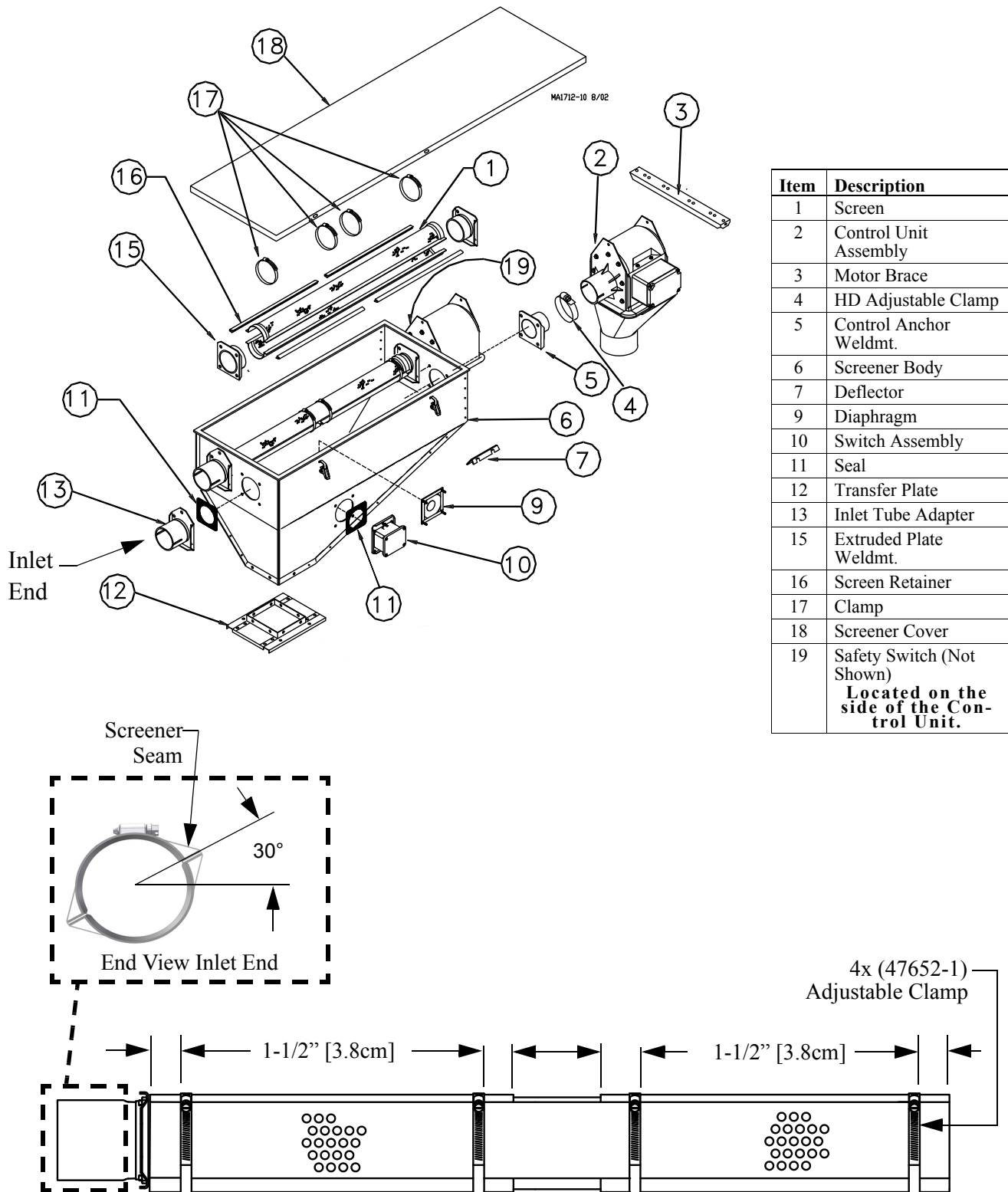


Figure 8. Dual Model 90 & 108 Screener Assembly Procedure.

## Screener Bracing

### Model 90 Screener

Chains (or cables) are required to support the weight of the Model 90 Screener Assembly. However, no other special bracing is required. See Figure 11.

### Model 108 Screener

Chains (or cables) are required to support the weight of the Model 108 Screener Assembly. Additional support for the Model 108 Screener Assembly is provided by the Pipe Brace supplied.

Install the additional screener support components as specified below and as shown in Figure 9.

Loosely bolt the (2) Pipe Braces to the Model 108 Screener Body, using 5/16-18 hardware supplied.

Fasten the Pad Brace to the Pipe Braces, as shown in Figure 9, using 5/16-18 hardware supplied.

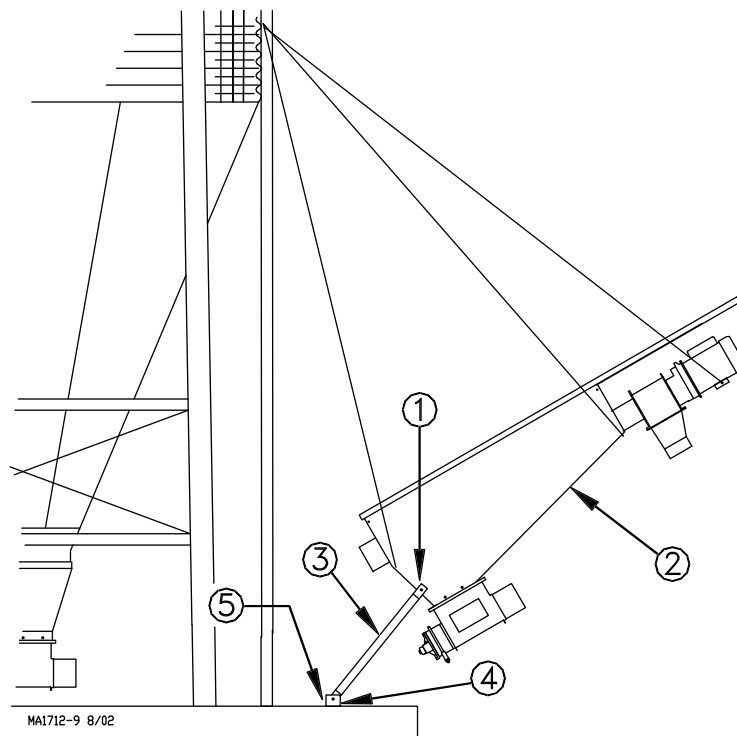
After the Auger Tubes are installed, and the Screener is in its final position, use (2) 1/2" x 2-3/4" concrete lags, supplied, to anchor the Pad Brace to the concrete. At that time, tighten all the bracing hardware.

### Dual Model 90 & Dual Model 108 Screener

Support for the Dual Model 90 & Dual Model 108 Screeners is provided by the Stand Kit, as shown in Figure 10.

Loosely assemble the Stand Kit as shown in Figure 10, using 5/16-18 hardware.

Leg Extensions are supplied for each of the (4) legs (two short legs and two long legs).



Key	Description
1	5/16-18 Hardware
2	Model 108 Screener Body
3	Pipe Brace
4	Pad Brace
5	Use concrete lag bolts to anchor the Pad Brace to the pad

Figure 9. Dual Model 90 & 108 Screener Bracing (side view).

Side "X" Braces are supplied to be installed, as shown in Figure 10, to provide strength and rigidity. Bolt the Side "X" Braces to the legs and together through the hole in the center.

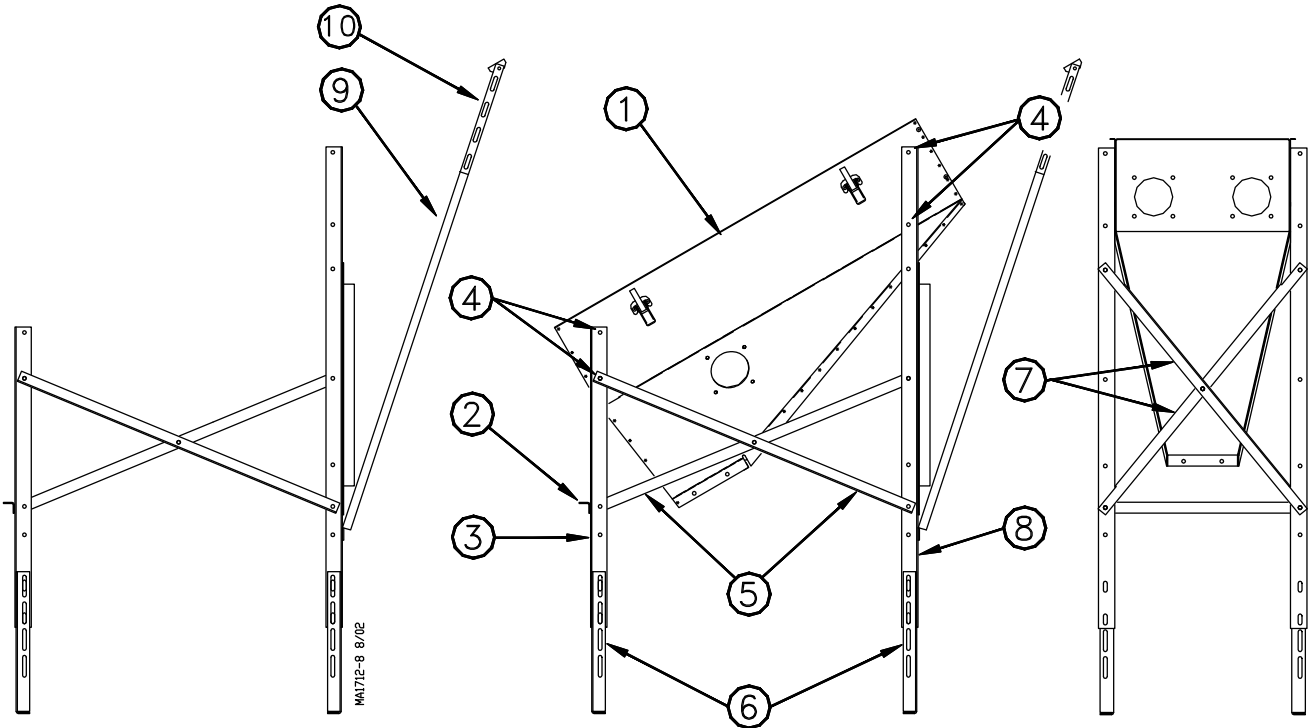
Rear "X" Braces should be installed similarly. Bolt the Rear "X" Braces to the legs and together through the hole in the center.

Install the Front Cross Brace, as shown, between the two short legs.

Set the Screener Body in the framing, as shown.

Field drill the holes, for 5/16-18 hardware, in the Screener Body to secure the legs to the Screener.

Lift & Right Hand Motor Support Angles & Adjustment Angles should be installed & adjusted to support the motor weight.



**Framing Assembled (Side View)**

**Side View**

**Front View**

Key	Description
1	Dual Screener Body
2	Front Cross Brace
3	Short Leg
4	Drill for 5/16" hardware approximately as shown.
5	Side "X" Brace
6	Extension Leg
7	Rear "X" Brace
8	Long Leg
9	Motor Support Angle
10	Adjustable Angle

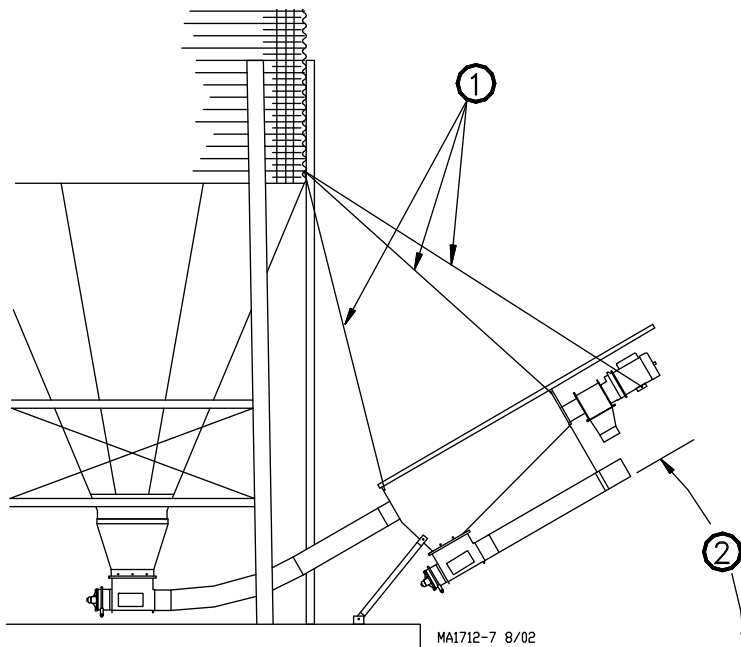
(Motor Support Angle Legs not shown)

Figure 10. Dual Model 90 & 108 Screener Stand Kit Assembly

## Screeners Installation

Installation of the Single Model 90 & 108, Dual Model 90 & 108 Screeners are the same unless noted otherwise.

1. The Screener must be placed on a 30° angle for proper operation.
  - Model 90 and Model 108 ONLY--If the Screener is to be used with a Straight-out Boot, cut a 45° hardened steel elbow to 30° and install between the Feed Bin Boot and the Screener.
  - If the Screener is to be used with a 30° Boot, an 18" (457 mm) section of straight tube must be installed between the Feed Bin Boot and the Screener--so that the Screener will clear the ground.
  - Dual Model 90 & 108 ONLY--Cut an additional set of elbows to install between the bin boot and the screener (due to outlet spacing on bin boot vs. tube anchor spacing on screener).
2. Model 108 ONLY--Support for the Model 108 is provided by the Screener Brace Kit **and** chains or cable. Later, after the Power Unit and Motor Brace are installed, support the Power Unit with chain or cable from the bin leg. See Figure 11.
- Model 90 ONLY--Support the Screener with chain or cable as shown in Figure 11. Later, after the Power Unit and Motor Brace are installed, support the Power Unit with chain or cable from the bin leg.



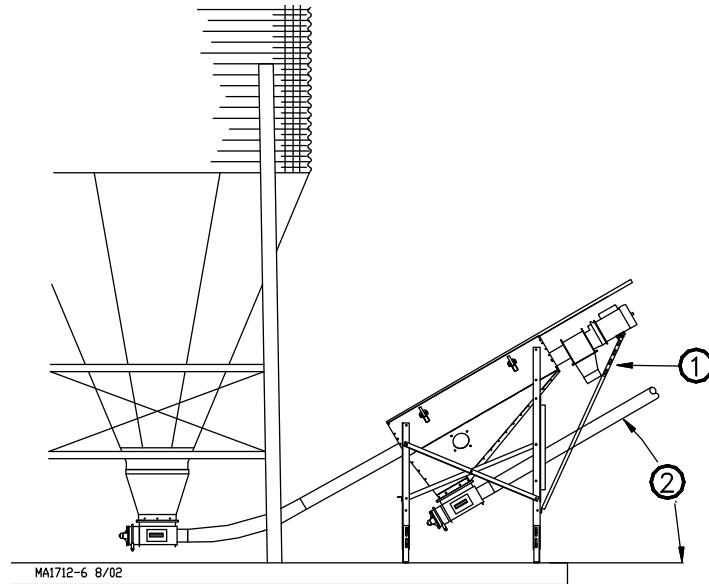
Key	Description
1	Chain or cable used to support the weight of the Feed Screener.
2	30° Angle

Figure 11. Model 90 and Model 108 Screener Installation (side view).



Dual Model 90 & 108 -Support for the Dual Model 90 & 108 is provided by the Screener Support Kit. Chore-Time recommends supporting the weight of the Power Units. Assemble the Motor Support Angles and Adjustable Angles between the long Support Legs and the Motor Brace ends.

See Figure 12.



Key	Description
1	Motor Support Bracket
2	30° Angle

Figure 12. Dual Model 90 Screener Installation (side view).

- Model 90 & Model 108 ONLY--Chains (or cables) are required to support the weight of the Screener Power Units. A Motor Brace is supplied to provide a convenient location for chain or cable hookup (for power unit support).

Position the Motor Brace under the Motor Base. Using 5/16-18 hardware, secure the Motor Brace to the Motor. See Figure 11

4. Model 90 & 108--Model 90 & 108 Screeners require using an Driver/Agitator assembly. The Agitator Bar is included with the Screener Assembly. The (slotted) Driver Weldment is included in Driver Assembly Kit.

Assemble the Driver Weldment and Agitator Bar, as shown in Figure 14.

Install the Driver/Agitator Assembly on the Gearhead Output Shaft. Start the socket headed screws, but leave the Anchor Clamp loose

Key	Description
1	Agitator Bar
2	Spring Pin
3	5-16-18x1/2" Socket Hd. Screw( <b>MDL 90</b> )
3	5-16-18x7/8" Socket Hd. Screw( <b>MDL 108</b> )
4	5/16-18x2-1/4" Socket Hd. Screw( <b>MDL 90</b> )
4	5/16-18x2-3/4" Socket Hd. Screw( <b>MDL 108</b> )
5	Anchor Clamp
6	Driver Weldment

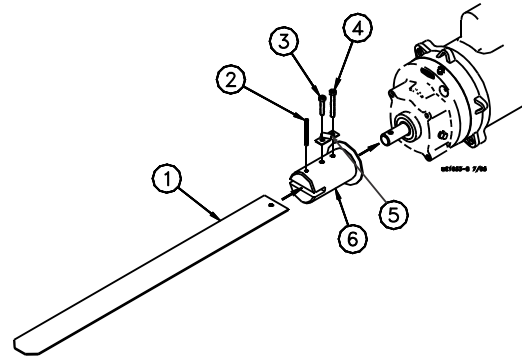


Figure 14. Model 90 & 108 Driver Components

enough to allow the auger to be threaded into it.

5. Insert the Auger through the Boot on the bin. Attach the Auger to the (Screener Power Unit) Driver by rotating the Driver and threading the Auger through the Anchor Clamp.
6. Pull on the loose end of the auger at the boot once or twice until it begins to stretch, then release it slowly. This will bring the auger to its "natural length".

Note: For ease of cutting and installation of the Boot Anchor, mark the Auger where it is to be cut. Then pull the auger an additional 8" (203 mm) and use locking pliers to clamp the auger.

**USE EXTREME CAUTION...SPRINGING AUGER CAN CAUSE SERIOUS INJURY.**

7. Insert the Anchor into the Auger until the Auger touches the Anchor Weldment flange. The Auger must be threaded onto the Boot Anchor Assembly through the Clamp Pin (Model 90) or Anchor Clamp (Model 108).

Model 90--Use a 5/16" open end wrench to tighten the Clamp Pin Set Screw on the Auger.

Model 108--Secure the Auger to the Anchor Weldment using the Anchor Clamp and 5/16-18 Socket Head Caps Screws.

8. Carefully remove the locking pliers. Install the Anchor and Bearing Assembly in the boot. Secure using Tube Clamp.

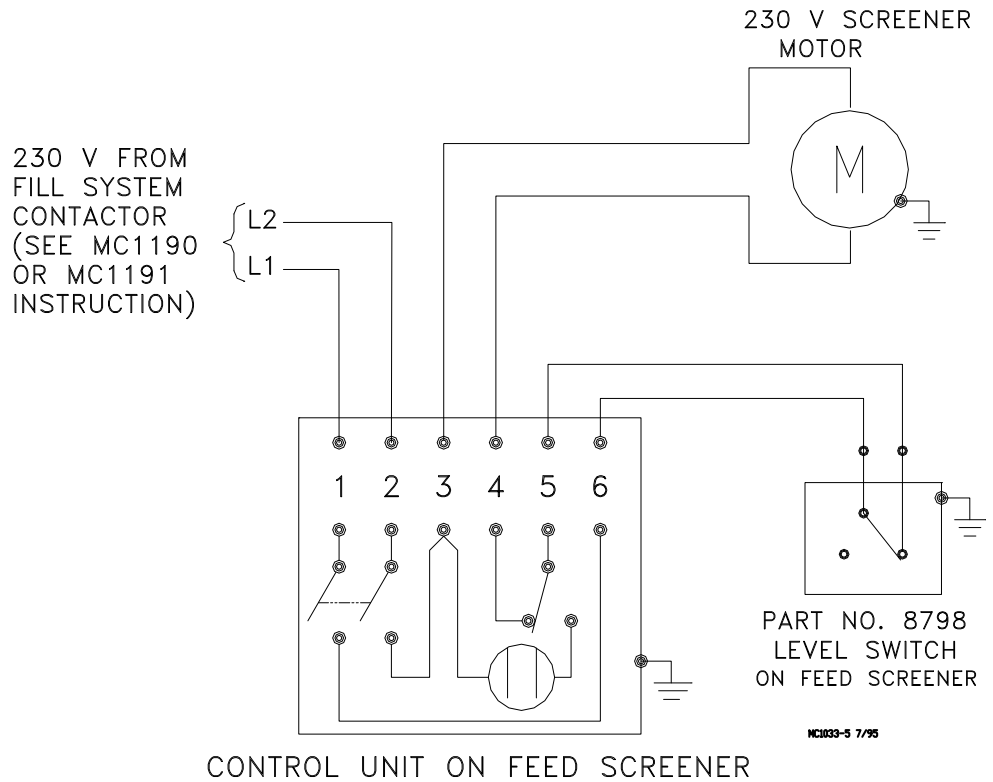
9. Model 90 only--Place the Cannonball in the Boot.
10. Install the clean out cover after the installation is complete.
11. Reinstall the funnel on the Control Unit Assembly so that it does not interfere with the outgoing Auger Tube. Fasten with existing hardware.
12. Fasten the Drop Tube to the funnel with sheet metal screws to route the screenings into a waste container.
13. Replace the plastic shipping plug on the top of the gearhead with the Vent Plug provided.
14. Fasten the Screener Cover Assembly over the screener. Over-center clamps are riveted to the side of the Hopper Body to secure the Screener Cover but allow for easy removal.
15. Dual Model 90 only--Two remote junction boxes are supplied to make wiring connections for the Power Units on the Dual Model 90 Screener. The boxes consist of a terminal block and a toggle switch to disable the Screener.  

The Junction Boxes may be installed in any convenient location. The boxes are water tight, allowing outside installation, is desired.
16. Wire the Screeners according to the applicable wiring diagram.  

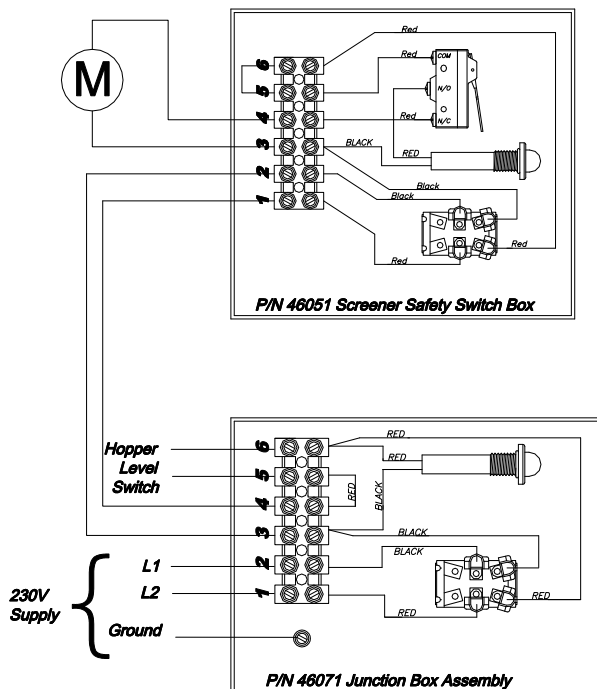
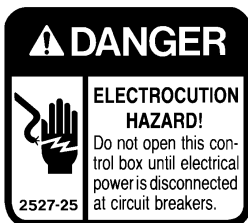
Complete system wiring for the ULTRAFLO Fill System is included in the Dead End Fill System Manual and in the ULTRAFLO Fill Loop Manual.
17. Install the remainder of the fill system according to the instructions packed with the system.
18. Dual Model 90 only--Balance the incoming and outgoing feed flow. It may be necessary to cut off a portion of the Restrictors on the Anchor & Bearing Assemblies in the Bin Boot and Screener Boot. Use a hacksaw to cut restrictors. See the FLEX-AUGER Installation Manual for additional details on shortening the Restrictor.

# Wiring Diagrams

## Standard Model 90 & Model 108 Screeners

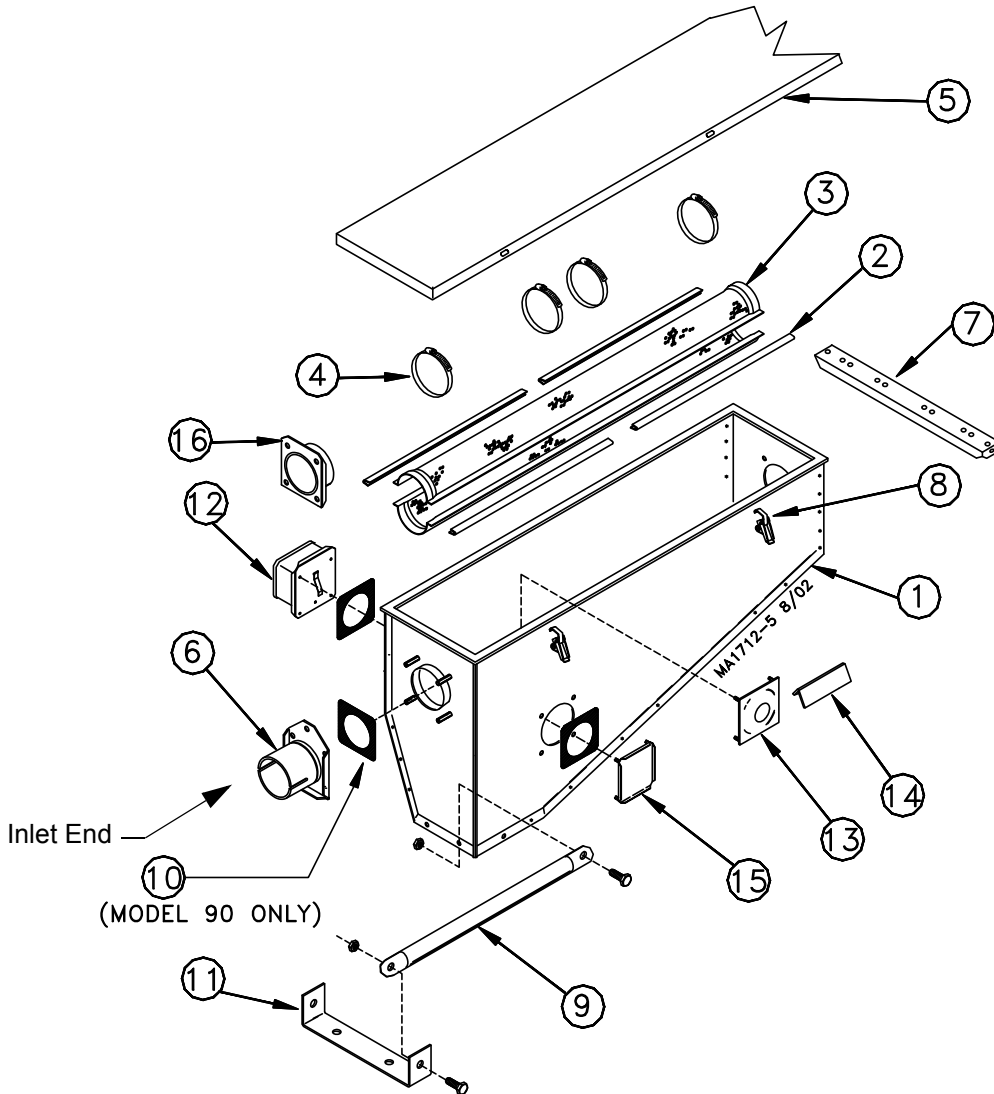


## Dual Model 90 Screeners



# Parts Lists

## Model 90 & Model 108 Screeners



### Notes:

The 45° Elbows must be ordered separately.

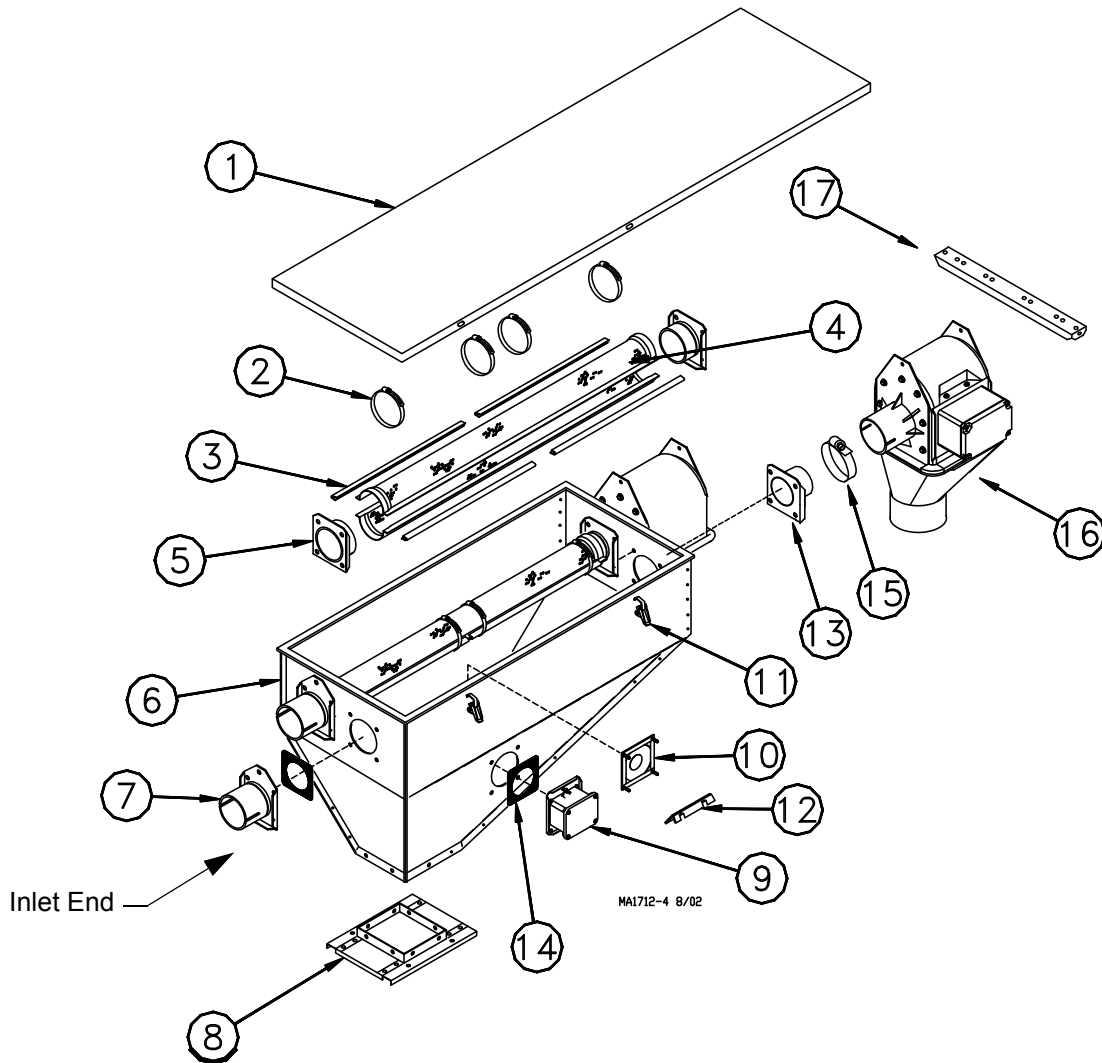
\*Screener Cover is not included with the Screener Hopper Assembly.

The entire **Model 90 Screener**, including 47712 Screener, 47713 Screener Cover, 46800-23 Control Unit, 24291 Screener Boot, and 48033 Drop Tube may be ordered under Chore-Time part no. **47711**.

The entire **Model 108 Screener**, including 47737 Screener, 47735 Screener Cover, 46800-24 Control Unit, 34351 Screener Boot, and 24233 Drop Tube may be ordered under Chore-Time Part No. **47732**.

Item	Description	Model 90 Part No.	Model 108 Part No.
1	Screener Hopper Weldment	26044	30517
2	Screener Retainer	24796	6226
3	Screen	7436	30519
4	Clamp	35245	13948
5*	Screener Cover	47713	47735
6	Tube Anchor	5069	34543
7	Motor Brace	47718	47718
8	Over Center Clamp	2536	2536
9	Pipe Brace	----	24316
10	Seal	4873	4873
11	Pad Brace	----	24317
12	Lower Hopper Switch	7840	7840
13	Diaphragm Assembly	7900	7900
14	Deflector	28281	28281
15	Cover Plate	4878	4878
16	Extruded Plate Weldment	22084	----
--	Drop Tube	48033	24233
--	45° Elbow	6472	----

## Dual Model 90 & Model 108 Screener



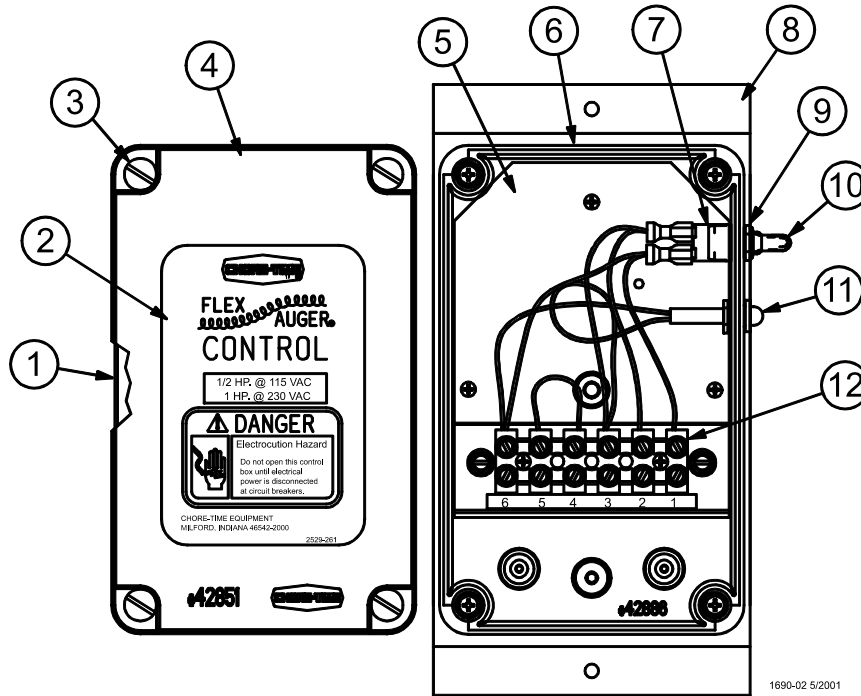
Item	Description	Model 90 Part No.	Model 108 Part No.
1	Screen Hopper Cover	47723	47741
2	Clamp	35245	13948
3	Screen Retainer	24796	6226
4	Screen	7436	30519
5	Extruded Plate Weldment	22084	40115
6	Screener Hopper Weldment	24794	-----
7	Tube Anchor Weldment	5069	34543
8	Screener Transfer	27387	27387
9	Lower Hopper Switch	7840	7840
10	Diaphragm Assembly	7900	7900
11	Over Center Clamp	2536	2536
12	Deflector	28281	28281
13	Control Anchor Weldment	47715	47733
14	Seal	7900	7900
15	H D Adjustable Clamp	47652-1	47652-2
16	Control Unit Assembly	46800-23	46800-24
17	Motor Brace	47718	47718
--	Drop Tube	24481	24233
--*	45° Elbow	6472	34406
--	Junction Box Assembly	46071	

The **MDL 90 Dual Screener** Assembly including the components listed, plus the Dual Screener Support Kit and Twin Lower Boot components, may be ordered under Part No. 47720.

\* Must be order separately

The **MDL 108 Dual Screener** Ass'y. including the components listed may be ordered under Part No. 47739 Screener Ass'y Kit and 47740 Dual MDL 108 Screener and 40134 Screener Support Kit,

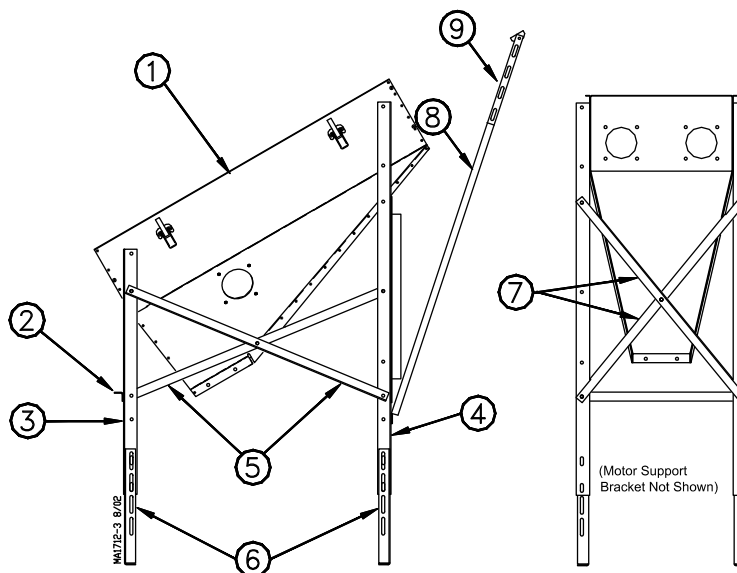
# Junction Box Assembly Part Number 46071



1690-02 5/2001

Item	Description	Part No.
1	Gasket	42854
2	Control Decal	2529-261
3	Plastic Screw	42849
4	Electric Box Cover	42851
5	Mount Panel	46072
6	Machined Electrical Box	43883-1
7	Toggle Switch	7767
8	Box Mount Panel	46069
9	Shoulder Nut	13407
10	Switch Boot	13406
11	Pilot Light	46047
12	6 Position Terminal Block	34925-6

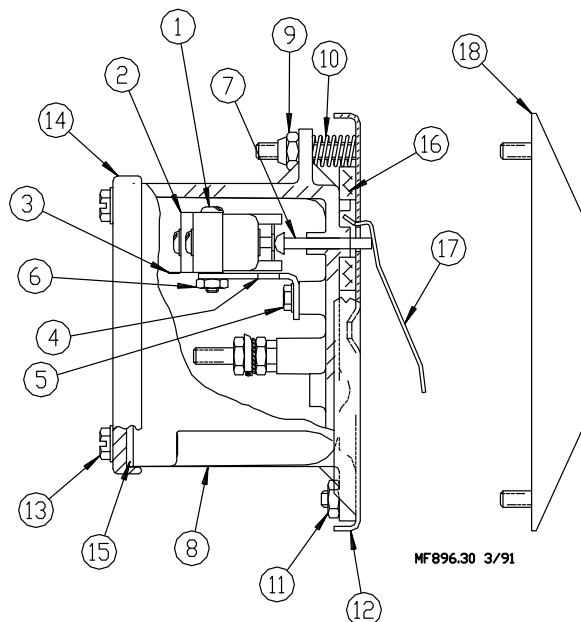
## Dual Model 90 & Model 108 Screener Support Kit (27541 & 40134)



Key	Description	Part No. 27541	Part No. 40134
1	Screener Hopper Body	Shown for clarity	Shown for clarity
2	Front Cross Brace	27616	40130
3	Short Leg	27619	27619
4	Long Leg	27621	40133
5	Side "X" Brace	27618	40132
6	Extension Leg	27620	27620
7	Rear "X" Brace	27617	40131
8	Motor Support Angle	47726-1(L.H.)	47726-1(L.H.)
8	Motor Support Angle	47726-2(R.H.)	47726-2(R.H.)
9	Adjustment Angle	47727	47727

## Lower Hopper Switch (8798)

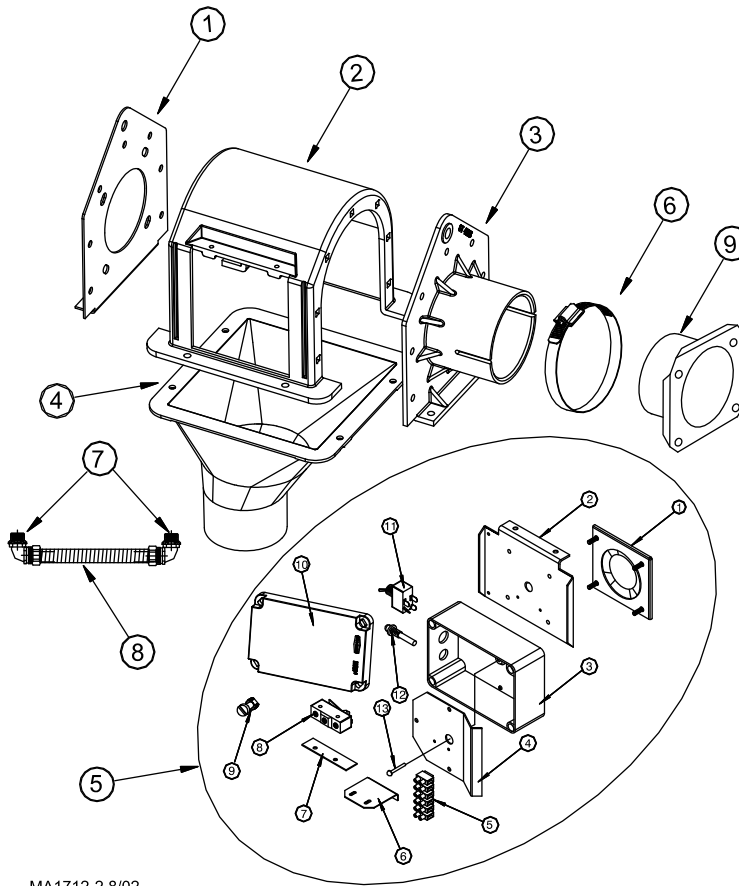
Key	Description	Part No.
1	6-32 x 7/8" Rd. Hd. M.S.	1921
2	SPDT Actuator Switch	7114
3	Switch Insulation	1907-5
4	Switch Bracket	7068
5	#6 x 3/8" Slot Wash. Hd. Screw	6782
6	6-32 Hex Nut	771
7	Pin	8757
8	Switch Box	7841
9	10-32 Hex Lock Nut	6963
10	Spring	6972
11	10-32 Hex Nut	4297
12	Mounting Plate	7908
13	#10 Twin Helix Screw	6980
14	Switch Box Cover	6776
15	Gasket	6777
16	Gasket	6968-1
17	Paddle	7896
18	Diaphragm Assembly	7900
--	Deflector	28281
--	Warning Decal	2527-15



MF896.30 3/91



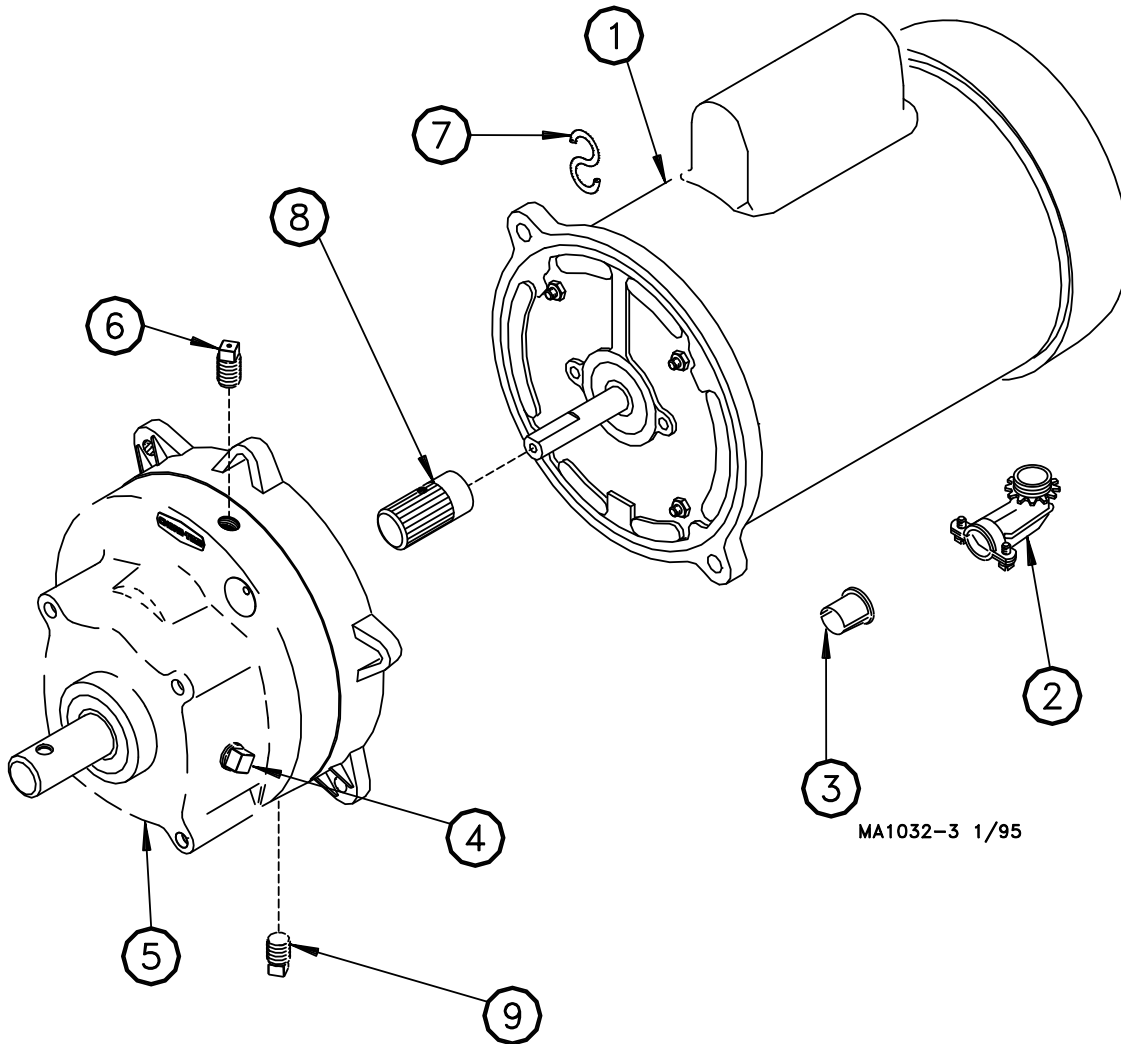
## Screener Control Unit (for standard Model 90 and Model 108 Screeners)



MA1712-2 8/02

Key	Description	Model 90	Model 108	Key	Description	46051 Switch Part No.
		46800-23 Part No.	46800-24 Part No.			
1	Gearhead End Plate	43596	46596	1	Diaphragm Assembly	46159
2	Control Unit Body	43601	43601	2	Switch Cover Plate	46030
3	Tube Anchor Plate Wldt	45926	45927	3	4x6 Electrical Box	46070-1
4	Control Unit Funnel	45943-2	45943-3	4	Mount Panel	46072
5	Switch & Plate Assembly	46051	46051	5	Terminal Block	34925-6
6	H.D. Adjustable Clamp	47652-1	47652-2	6	Switch Bracket	46093
7	Water Tight Connector	23810	23810	7	Switch Insulation	1907-5
8	Non-Metal Flex Conduit	26982-10	26982-10	8	Micro Switch	46091
9	Control Anchor Wldt	47715	47733	9	Plastic Screw	42849
				10	4x6 Elect Box Cover	42851
				11	Toggle Switch	7767
				12	Pilot Light	46047
				13	Rivet, 3/16 x 1.00 round Head(S.S.)	46905

## Screener Power Units

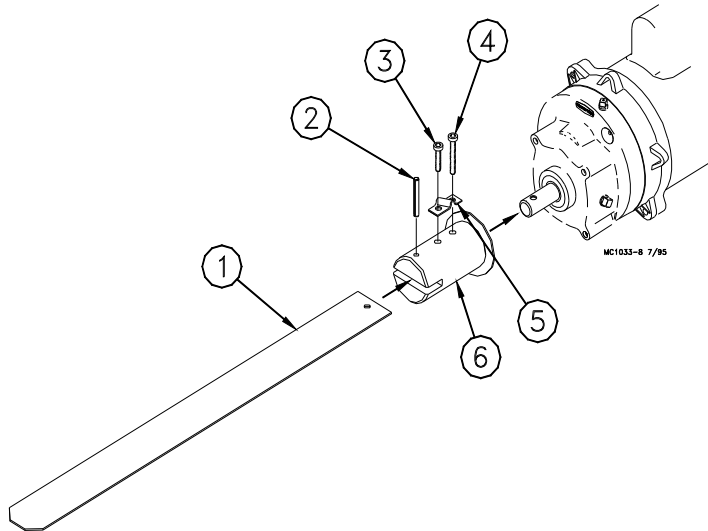


MA1032-3 1/95

Key	Description	3259-52 Part No.	3259-88 Part No.	3259-119 Part No.	3259-104 Part No.
1	Motor	5051	6305	34102	28034
4	Pipe Plug	2755	2755	2755	2755
5	Gearhead	3261-7	3261-10	3261-7	3261-10
6	Vent Plug	3523	3523	3523	3523
7	S Hook	4270	4270	4270	4270
8	Pinion Assembly	5046	5046	5046	5046
9	Magnetic Pipe Plug	30160	30160	30160	30160

<u>Part Number</u>	<u>HP</u>	<u>RPM</u>	<u>Phase</u>	<u>Hz</u>	<u>Voltage</u>
3259-52	3/4 HP	348 RPM	Single Phase	60 Hz	230
3259-88	3/4 HP	348 RPM	Single Phase	50 Hz	220
3259-119	3/4 HP	348 RPM	Three Phase	60 Hz	230/460
3259-104	3/4 HP	348 RPM	Three Phase	50 Hz	220/380

## Model 90 & Model 108 Driver Assembly

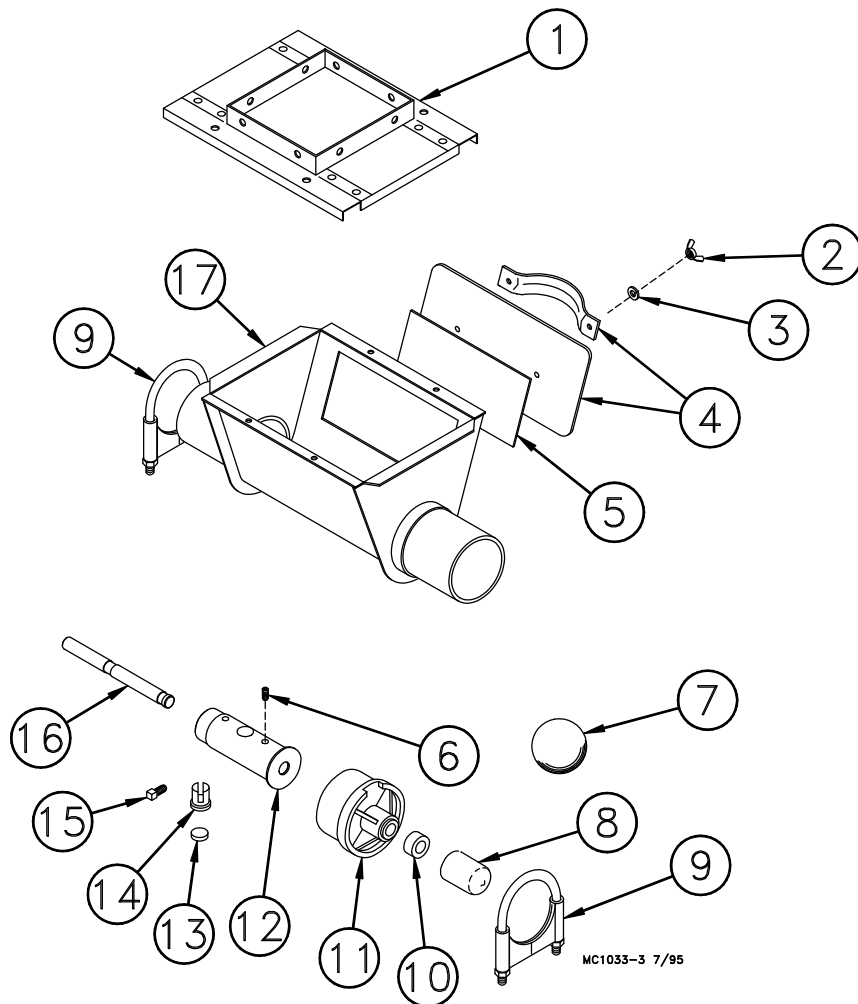


Key	Description	45701 Drive Ass'y Part No.	34349 Driver Ass'y Part No.
1	Agitator Bar	47717	47768
2	Spring Pin	2960-8	6022
3	5/16-18x1/2" Socket Hd Cap Screw	6850-3	
3	5/16-18x7/8" Socket Hd Cap Screw		6850-1
4	5/16-18x2-1/4" Socket Hd Cap Screw	6850-4	
4	5/16-18x2-3/4" Socket Hd Cap Screw		6850-2
5	Anchor Clamp	7703	7703
6	Driver Weldment	7706	34350

**Note:**

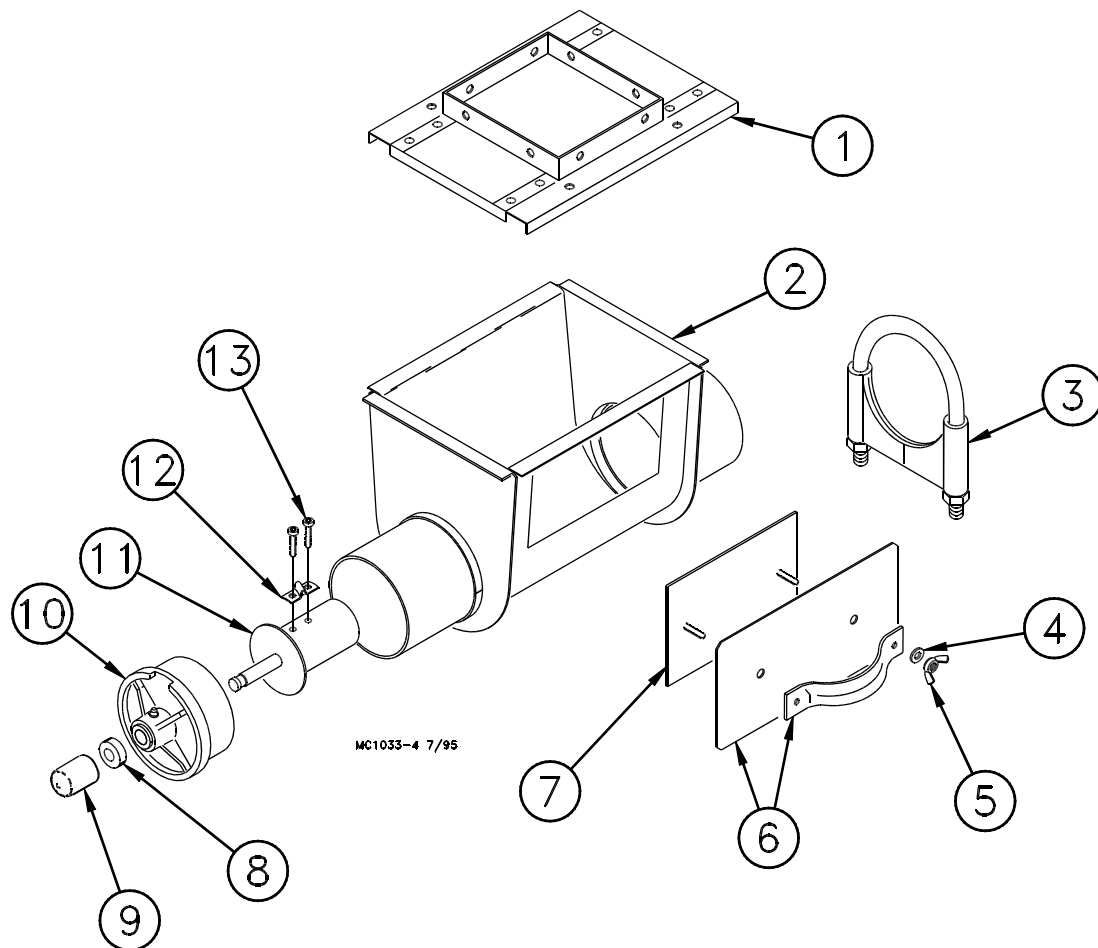
Item #1 (Agitator Bar) is supplied with the Screener. It is not included with the Driver Assembly.

## Model 90 Screener Boot Assembly (Part No. 24291)



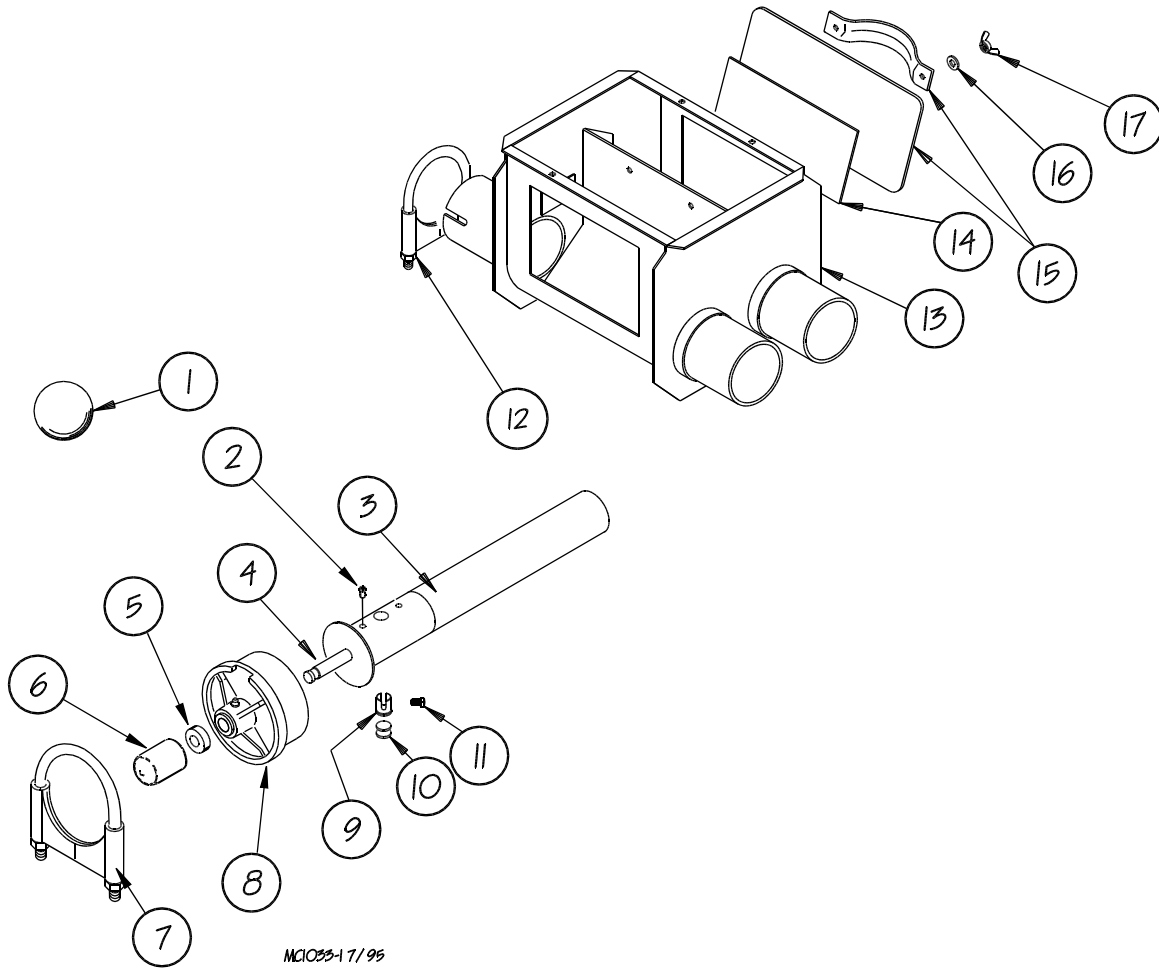
Key	Description	Part No.
1	Screener Transfer	24442
2	5/16-18 Wing Nut	2146
3	Rubber Washer	8941
4	Clean-Out Cover Weldment	6301
5	Back Plate Weldment	6298
6	5/16-18x3/8" Set Screw	1174
7	Cannonball	3531
8	Safety Cap	29702
9	Tube Clamp	6721
10	5/8" Set Collar	1386
11	Bearing Cap Assembly	34830
12	Anchor Tube Weldment	26048
13	Clamp Spacer	5009
14	Clamp Pin	4702
15	5/16-18x1/2" Set Screw	5095
16	Anchor Shaft	6832
17	Boot Body Weldment	28873
--	Danger Decal	2527-9

## Model 108 Screener Boot Assembly (34351)



Key	Description	Part No.
1	Screener Transfer	24442
2	Boot Body Weldment	30386
3	Clamp	34338
4	Rubber Washer	8491
5	5/16-18 Wing Nut	2146
6	Clean-Out Cover Weldment	6301
7	Back Plate Weldment	6298
8	5/8" Set Collar	1386
9	Safety Cap	29702
10	Bearing Cap Assembly	30314
11	Anchor Weldment	34369
12	Anchor Clamp	7703
13	5/16-18 x 7/8" Sock. Hd. Cap Screw	6850-1
--	Tube Insert	34337
--	Danger Decal	2527-9

## Dual Model 90 Screener Boot Assembly (9309)



Item	Description	Part No.
1	Cannonball	3531
2	5/16-18 x 3/8" Set Screw	1174
3	Tube Anchor Weldment	6833
4	Anchor Shaft	6832
5	5/8" Set Collar	1386
6	Safety Cap	29702
7	Tube Clamp	6721
8	Bearing Cap Assembly	34830
9	Clamp Pin	4702
10	Clamp Spacer	5009
11	5/16-18 x 1/2" Set Screw	5095
12	Tube Clamp	6721
13	Twin Boot Body	28878
14	Back Plate Weldment	6298
15	Clean Out Cover Weldment	6301
16	Sealing Washer	8491
17	5/16-18 Wing Nut	2146
--	Danger Decal	2527-9

# *Notes*

**Made to work.  
Built to last.**

**Revisions to this Manual**

<b>Page No.</b>	<b>Description of Change</b>
<b>Various</b>	<b>Added Detail to Screener Assembly, Updated some manual formatting.</b>

Contact your nearby Chore-Time distributor or representative for additional parts and information.

**CTB Inc.**  
**P.O. Box 2000 • Milford, Indiana 46542-2000 • U.S.A.**  
**Phone (574) 658-4101 • Fax (877) 730-8825**  
**E-Mail: [poultry@choretime.com](mailto:poultry@choretime.com) • Internet: <http://www.choretime.com>**

**Printed in the U.S.A.**