

# CHORE-TRONICS® 3 Controller

## TAKE CONTROL of Your Entire Poultry Operation



Let's grow together®



# Chore-Tronics® 3

The CHORE-TRONICS® 3 Control is part of the complete line of poultry production solutions available from your independent Chore-Time distributor.



Count on Chore-Time for  
experience, reliability,  
performance and confidence.

### Better Management From Brood to Grow-Out

TAKE CONTROL of your climate, feeding and drinking systems, and much more from anywhere using the CHORE-TRONICS® 3 Control with Mobile App and BROADCASTER™ Alert System. It delivers all the features you have become familiar with – and some powerful new tools – in one easy-to-use touch-screen control system.

# CHORE-TRONICS® 3 Controller

## More Ways to Maximize Bird Performance



The CHORE-TRONICS® 3 Controller gives you complete command over your entire poultry house at every stage of growth. With your input, it automatically maintains precise monitoring and control over the feeding and drinking systems, environment and a wide variety of data relating to your poultry operation. Because you can view consumption and growth data in real time, the CHORE-TRONICS® 3 System also helps you spot problems early and fine-tune settings so you get maximum performance out of every flock.

## Newest Tools to Manage Productivity

### PDS™ Pneumatic Drinking System Technology

Maintain water pressure no matter how many birds are drinking using PDS technology built into the CHORE-TRONICS® 3 System. The CHORE-TRONICS® 3 Controller provides the right amount of water your birds need, exactly when they need it – automatically adjusting with bird age and bird demand.

- No need to manually adjust dozens of regulators – save time and labor.
- Control your water supply from one central location using defined growth curves.
- Monitor curving of the minimum and maximum flow-rate alarms.
- Choose to flush based on time of day and/or water temperature to help stimulate birds to eat and drink.
- Monitor and fine-tune water column and flush settings with the CHORE-TRONICS® Mobile App.



## Heat and Moisture Removal Calculation

The CHORE-TRONICS® 3 System continuously calculates the recommended minimum ventilation time for removing heat and moisture from the house. It is the most accurate way yet to keep your birds comfortable and your floors dry.

- Keeps track of the actual amount of water going into your house and takes measurements of temperature and humidity inside and outside the house.
- Works hand-in-hand with built-in relative humidity influence controls to optimize moisture levels in the house.

## Maximum CFM Curves

Don't spend your days turning fans on and off as your birds grow. The CHORE-TRONICS® 3 Controller knows how much air each Chore-Time fan can move and provides automatic control to accurately maintain maximum CFM curves based on bird age.

- The system uses preloaded CFM performance capabilities of Chore-Time fans to provide accurate airflow control.
- As static pressure changes in the house, the control calculates how much air each fan can move based on the conditions.



Large relay box with room for 56 relays saves wall space.

**Day 3** Your CHORE-TRONICS® 3 Unit detects a fraction of a degree change in house temperature. The system automatically ramps up minimum ventilation time based on built-in temperature curves to make sure specified conditions are maintained. You and your birds both breathe easy.

**Keep chicks comfortable with built-in ventilation ramping timer.**

.....

**Day 6** You check your CHORE-TRONICS® Mobile App to make sure minimum ventilation temperature is being maintained evenly. All is good. The CHORE-TRONICS® 3 System controls multiple variable-speed fans to automatically maintain a more even temperature throughout the house without sudden changes in ventilation. You can run a 57-inch fan at a slower speed instead of cycling two 36-inch fans.

**Let one fan do the work of two.**

.....

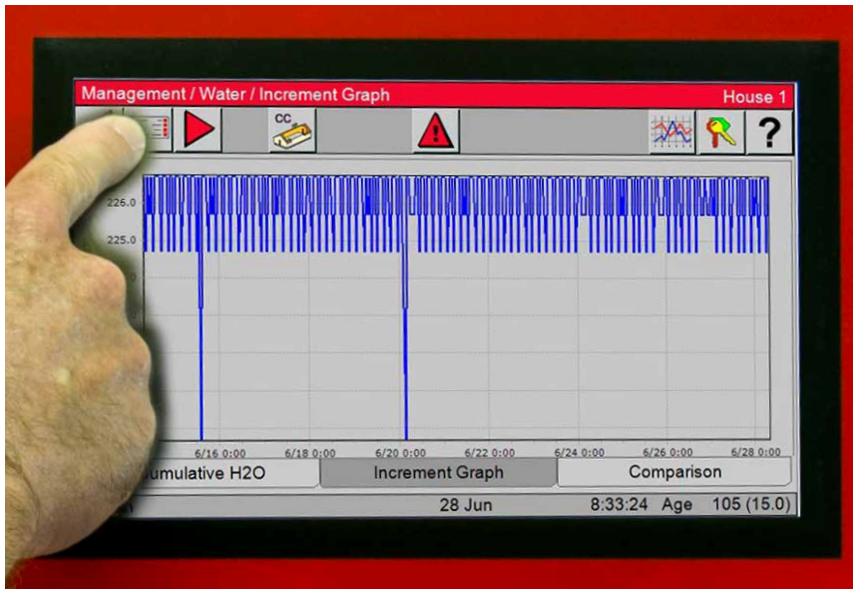
**Day 9** The moisture inside your poultry houses climbs too high. The heat removal calculator, moisture removal calculator and RH influence monitor on your CHORE-TRONICS® 3 System work together to keep floors in optimal condition.

**Keep your birds' feet dry and healthy.**

.....

# Production Tracking

## Graphs and Tables Bring Your Data to Life



Day	Time	Value
105	28 Jun 6:29	226.7
105	28 Jun 7:29	226.7
105	28 Jun 8:29	224.7
105	28 Jun 9:29	226.7
105	28 Jun 4:29	226.7
105	28 Jun 3:29	226.7
105	28 Jun 2:29	224.7
105	28 Jun 1:29	226.7



Large 10-inch (25 cm) color display and touch-screen interface make it easy to get the information you need.

Analyze data and take action based on real-time production information in your house. Choose hourly details that let you fine-tune your system or summaries that give you the big picture.

- Track water usage every 60 minutes over the last two weeks in table form.
- Monitor 14-day trends with easy-to-read increment graphs of temperature, relative humidity, mortality, water consumption and feeder window curves.
- Summary data for 100 days of mortality, water and feed consumption can easily be viewed in table form.

### We Speak Your Language

The CHORE-TRONICS® 3 Control comes with 11 built-in languages to improve communication and efficiency. Instantly switch the display text between *English, Spanish, French, Dutch, Polish, Turkish, Thai, Chinese, Japanese, Korean and Vietnamese*. More languages are always being added.

USB port gives you the option to operate controls with a wired or wireless mouse.



# Current Conditions At A Glance



**Chore-Tronics® 3**

The CHORE-TRONICS® 3 Control gives you all the current condition information you need on a single display. No wasting time searching for critical information. If you need more detail about any one condition, it is just a click away.

- Set, average and variable-speed temperatures
- Current ventilation mode
- Today's water consumed
- Today's feed consumed
- Static pressure
- Relative humidity
- Air speed
- Current bird weight
- Outside temperature
- Outside humidity
- NH<sub>3</sub> level
- CO<sub>2</sub> level
- PDS water column height

## Day 14

*It is time to transition birds to the full house. With the push of a button, you change controller settings to one of six customized programs. Because you used your USB setup key to transfer settings between controllers at the beginning of the flock, you were able to apply the same control configuration to every house without depending on employees to remember complex settings.*

**Save six customized settings to simplify transitions.**

## Day 19

*A motor overload has tripped on a feeder line. You get an idle time alarm for feeder line five and verify it with the CHORE-TRONICS® Mobile App. You identify the problem and correct it before production is impacted.*

**Track field-installed feeder line run-time monitors remotely to head off problems.**

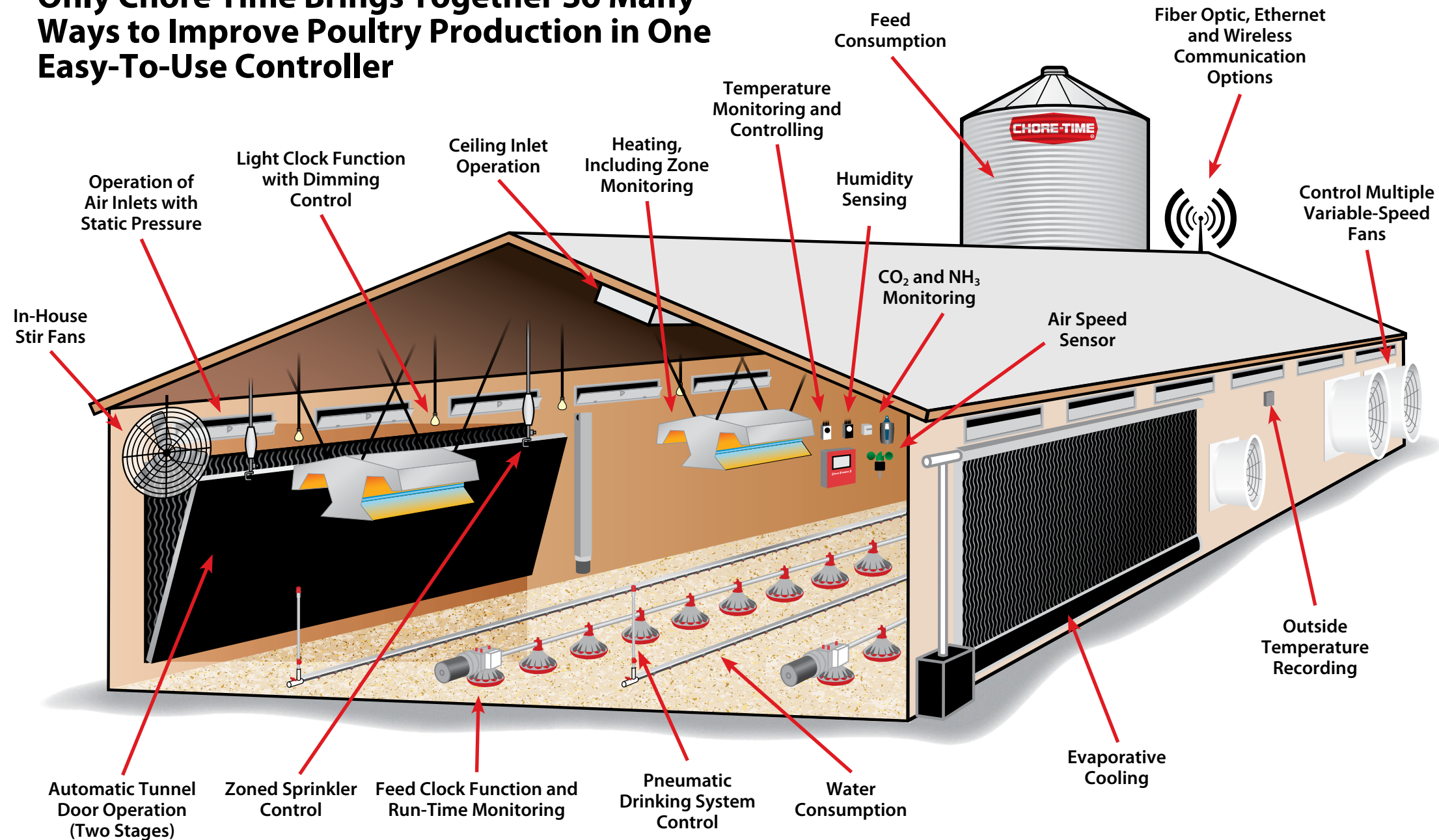
## Day 24

*BROADCASTER™ System that there is a drinker flow-rate alert in house four. It turns out there was an issue with the well pump that was easily corrected, and water consumption returns to normal.*

**Take immediate action on critical alerts and avoid production issues.**

# CHORE-TRONICS® 3 Whole House Control

Only Chore-Time Brings Together So Many Ways to Improve Poultry Production in One Easy-To-Use Controller



## Drinking

- Water consumption
- Low water pressure alarm
- PDS™ water column control
- Line flushing based on time and temperature
- Maximum and minimum water flow-rate alarms
- Maximum and minimum water column height alarm

## Ventilation

- Multiple variable-speed fan control
- CO<sub>2</sub> sensor
- NH<sub>3</sub> sensor
- Ventilation timer ramping
- Power, tunnel and natural control
- Ceiling inlet control
- Static pressure control
- 16 house temperature sensors
- Outside temperature sensor
- Relative humidity sensor
- Air speed sensor
- Inlet anticipation
- Heater and fan run times
- Cool pad optimizing option
- Stir fan operation
- Sprinkler system control

## Management Tools

- Mortality data
- Bird weighing
- Water and feed relationships
- Feed conversion estimates
- Feeder line run time
- Wide range of history subjects with graphing
- User-defined programs
- Identify potential house environment problems early
- Quickly measure the impact of operational changes

## Feeding

- Feed scale
- Load cell connectivity
- Maximum feed run-time alarm
- Feed clock
- Run-time monitoring

## Integrated Peripherals

- Static pressure sensor included
- Built-in communication
- Dedicated output for light dimmer control
- Dedicated output for backup box
- Eight spare clocks for output assignment

# Communication and Connectivity Options

## Connecting It All Together

The CHORE-TRONICS® 3 System can be connected using a variety of wired and wireless connectivity options to match the unique setup of your operation.

**Fiber optic** – Regulate all of the poultry houses on your farm within a distance of 6,500 ft. (1,981 m) using lightning-resistant, reliable fiber optic cable. That is nearly a mile and a quarter, or two kilometers. Extend the distance farther with a switch or router.

**Ethernet** – Traditional Ethernet cable is a communications standard that allows connections up to 300 ft. (91 m). Extend the distance farther with a switch or router.

**Wireless** – Use Chore-Time’s wireless system to create your own on-farm network. It allows easy connection to the network of optional communication devices such as cameras or routers. Wireless systems also reduce susceptibility to lightning and other power surges.

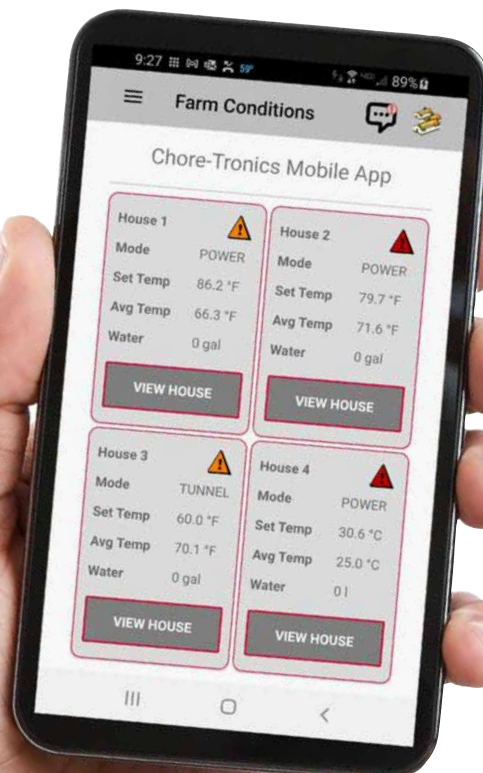
## Mobile Access and Control

Control your poultry houses from anywhere with the Chore-Time CHORE-TRONICS® Mobile App for your Apple® iOS or Android™ device. It uses a mobile server to communicate with your house control system whenever you need information, wherever you go.

## Alert Notification System



Receive alerts on the go through call or text notifications with our optional BROADCASTER™ System. Stay informed of changes in your poultry house environment, and take action on the spot to protect your investment.



Apple and Android are not owned or licensed by CTB, Inc. and are the sole property of their respective owner or owners.

## C-CENTRAL™ Professional Management Software

Compatible with all generations of CHORE-TRONICS® Controls, our C-CENTRAL Software gives you precise, flexible in-house control, monitoring and analysis of the data you need to make operational improvements.



For the latest information on CHORE-TRONICS® Controls and Chore-Time's complete poultry production systems, visit our website at [choretime.com](http://choretime.com).

**Day 29** *Birds wake up in the morning and go to the drinker line all at once.*

*No problem. The CHORE-TRONICS® 3 System maintains water column height using PDS technology that responds to birds' thirst.*

***Give birds all the water they need, when they need it.***

.....

**Day 30** *Larger birds need higher CFM rates to stay comfortable. The CHORE-TRONICS® 3 Controller takes human error out of the equation by automatically defining 10 maximum CFM rates to keep birds comfortable at every stage of growth.*

***Automate airflow based on bird age to maximize productivity.***

.....

**Day 36** *Thunderstorm warnings are in your area, and you see lightning in the distance. You're not worried about your poultry operation, because you installed a combination of fiber optics and wireless connections for your CHORE-TRONICS® 3 System.*

***Get extra confidence when lightning strikes.***

.....



# Fully Integrated Management Options

## CHORE-TIME® Bird Scale



**Built into the CHORE-TRONICS® 3 Control – no separate scale controller needed!**

Chore-Time's Fully Integrated Bird Scale provides an affordable and accurate diagnostic tool that can help you optimize your production operation and better plan your bird harvest date.

## CHORE-TIME® Feed Scale



Schedule and measure bird performance in your operation based on eating rates and habits. Accurate daily consumption rates help in evaluating growth performance and in identifying potential problems.

## Feed Inventory System



Chore-Time's Integrated Feed Inventory System with load cell connectivity provides an economical means for managing and monitoring feed stored in feed bins on the farm.

## Programmable Backup (PBU) Box



Input your house temperature curve, and Chore-Time's PBU will adjust the backup cooling and heating outputs automatically. It eliminates frequent resetting of mechanical thermostats. Connects to standard or extended backup boxes. Other backup options are also available.

## Monitoring Sensors

**CHORE-TRONICS® Air Speed Meter** – Manage and monitor tunnel fan operation. Our Air Speed Meter verifies tunnel fan performance by dependably measuring airflow over 125 feet per minute (0.635 m/s).



**CO<sub>2</sub> and NH<sub>3</sub> Monitors** – Provide consistent and accurate readings so you can make ventilation adjustments to maintain air quality.



**CHORE-TRONICS® Feeder Line Run-Time Monitor** – Can be connected to every feeder line in a poultry house to track daily run time per line and to build a database of information for diagnosing and solving feed distribution problems.



**CHORE-TIME® Water Meter** – Knowing daily water consumption rates helps you evaluate growth performance and identify potential issues.



**CHORE-TRONICS® Humidity Sensor** – Accurately shows current relative humidity as well as minimum and maximum values.



## Day 40

*A tunnel fan belt breaks while in full tunnel ventilation. The CHORE-TRONICS® Control sends a “Minimum Air Speed Full Tunnel” alert message because the air speed dropped. You inspect the fans, replace the broken belt and restore full operation.*

**Maintain critical climate systems in your houses.**

## Day 46

*The poultry company’s field supervisor stops by to review feed and water trends compared with bird weight. Production is ahead of schedule, and they decide to send the flock to market two days early. The more data you have, the better decisions you can make. Chore-Time’s Bird Scale is fully integrated into the CHORE-TRONICS® 3 Controller to give you continuous updates on bird weights, feed conversion and growth trends.*

**Monitor feed conversion to optimize marketing decisions.**

---

*Production examples illustrate the power of your CHORE-TRONICS® 3 Unit to help you control, monitor and improve your poultry operation. These are only examples, and it is important to follow guidelines for your birds at all stages of growth. See your Chore-Time distributor to learn more about the system’s complete capabilities and options.*

---

# CHORE-TRONICS® 3 Control

## Expandable to Easily Add Future Functionality

Looking for a system that can grow with your needs? CHORE-TRONICS® 3 Controls are modular and upgradeable so you can add new options, features and capabilities at any time. An external USB port provides easy access for control setup, data collection and system upgrades.

- Choose 32, 40, 48, 56 or 80 nameable outputs
- Includes a combination of analog and digital inputs for a total of 28, and can be expanded to a total of 56
- Up to 10 optional controlling temperature sensors may be added for a maximum of 16

*Add new features via USB upload to meet your growing operation and monitoring needs.*

*Back up and easily transfer settings between identical controls with a USB setup key.*



Chore-Time has been a leader in poultry and egg production systems since 1952. We have the experience to deliver complete solutions for feeding, feed handling, drinking, egg handling, climate control and management systems. You can count on Chore-Time and your independent Chore-Time distributor for equipment reliability, production performance and ultimate confidence.



**Let's grow together®**

[www.choretime.com](http://www.choretime.com)

Chore-Time is a division of CTB, Inc.  
A Berkshire Hathaway Company

Find your authorized independent distributor at [choretime.com/distributor](http://choretime.com/distributor)

**Chore-Time**  
Milford, Indiana USA  
[info@choretime.com](mailto:info@choretime.com)

**Chore-Time Europe Sp. z o.o.**  
Strykowo, Poland  
[info@choretime.pl](mailto:info@choretime.pl)

**Chore-Time Europe B.V.**  
Panningen, Netherlands  
[info@choretime.nl](mailto:info@choretime.nl)

**Volito B.V.**  
Veenendaal, Netherlands  
[ctgcs@choretime.com](mailto:ctgcs@choretime.com)