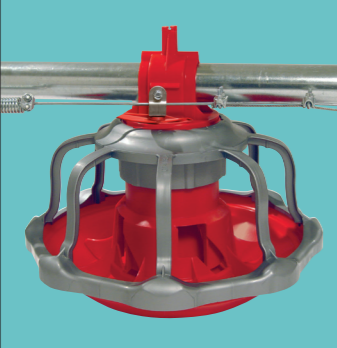
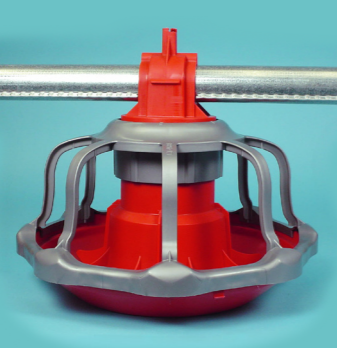
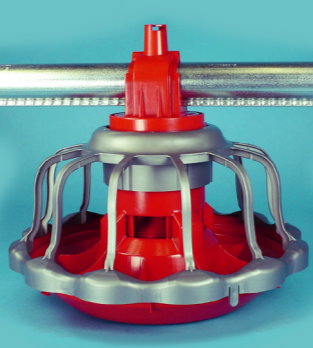


REVOLUTION® Feeder Models and Specifications

Rotary Flood (RF)	Non-Flood (NF)	Floor Flood (FF)
		
Features the Rotary Flood Gate Chore-Time invented in 2003 – permits partial flooding for a variable flood level, regardless of pan height. Use actuator system for 10 steps of ramping.	For use in the grow-out end of houses with partial house brooding.	Use the flood window in traditional floor flood, raising the pans to close the windows as birds grow, or manually lock the window into flood position for a flood feed level at any pan height.

Choose Your Results Finish Birds Heavier or Quicker!

With Chore-Time's REVOLUTION® Feeder, birds may reach mature weight a day or two earlier. Or, if your market date is fixed, birds may gain extra weight by harvest.

The REVOLUTION® Feeder's unique Rotary Feed Gate permits a gradual transition from high brood feed levels to grow-out levels, at any pan height. Give your birds a REVOLUTION® boost by changing their feed level with the only feeder that can do it both gradually and automatically ... Chore-Time's REVOLUTION® Feeder!

Recommended Broilers per Pan

Max. Weight	Recommended Feeder Model	Birds per Pan
4.5 lbs. (2.0 kg)	12-spoke	60-90
7.0 lbs. (3.1 kg)	12- or 8-spoke	55-75
9.0 lbs. (4.0 kg)	8-spoke	45-65

Feed line capacity is 17 lbs./min. (7.7 kg/min.) at 348 RPM, based on feed density of 40 lbs/ft³ (640 kg/m³).



Let's grow together®

www.choretime.com

Chore-Time is a division of CTB, Inc.
A Berkshire Hathaway Company

Find your authorized independent distributor at choretime.com/distributor

Chore-Time
Milford, Indiana USA
info@choretime.com

Chore-Time Europe Sp. z o.o.
Strykowo, Poland
info@choretime.pl

Chore-Time Europe B.V.
Panningen, Netherlands
info@choretime.nl

Volito B.V.
Veenendaal, Netherlands
ctgcs@choretime.com

CT-2252/202003

*Did you know?
Chore-Time invented the
flood window in 1991!*



12-Spoke Model for More Controlled Access



8-Spoke Model for More Open Access

A complete system:

- A repair top makes it easy to change out damaged feeders in minutes.
- Pans can be removed with a twist and hung from the incorporated hook for cleaning. A positive "click" assures that pans are snapped securely back in place.
- Legendary Chore-Time quality – *Made to Work. Built to Last.®*



REVOLUTION® Broiler Feeding System A Revolution in Feeding Technology



Patented (Additional Patents Pending)

Comfort

Chore-Time's REVOLUTION® Feeder's ingenious scalloped grill was designed specifically to fit the rounded shape of today's larger broilers. Birds eat comfortably from the pan's perimeter and waste less feed.

Conserve

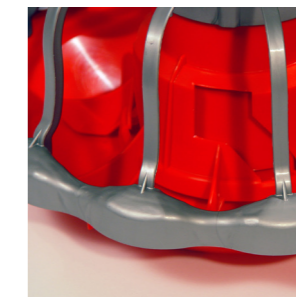
Together, the pan design, anti-rake fins and sculpted grill help keep feed waste to a minimum while still providing easy, comfortable access for birds of all sizes.

Control

On the floor or in the air, the REVOLUTION® Feeder introduces the ability to progressively adjust the feed level instead of cutting off brood levels abruptly. Begin with a high brood level for chicks, then reduce the feed level gradually for incrementally lower feed levels as birds grow. With the REVOLUTION® Feeder, you can even adjust brood feed levels automatically using a ramping program for up to 10 different feed levels.



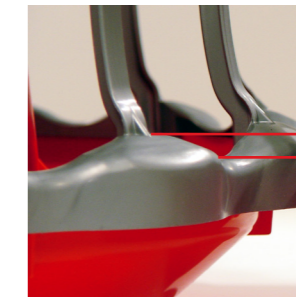
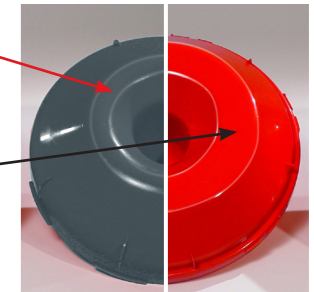
Count on Chore-Time for experience, reliability, performance and confidence.



The scalloped perimeter of Chore-Time's REVOLUTION® Feeder matches the shape of today's birds. It is rounded and smooth for comfort.

The grill's edge overhangs the pan to help keep feed from being raked out of the feeder.

Conventional feeder pans (left) were deep with a narrow feed surface area. Chore-Time's REVOLUTION® Feeder Pan (right) has a broad feed surface area that makes feed easy for birds to reach. The eating area is also thicker.



Chore-Time's REVOLUTION® Feeder Pan Assembly is 1/2 inch (12.7 mm) lower at the eating area. It controls waste like a deep pan, yet offers easy access like a shallow pan.

The T-shaped grill spokes of Chore-Time's REVOLUTION® Feeding System make the feeders easier for birds to exit.



Made of durable polypropylene plastic with ultraviolet inhibitors.

The REVOLUTION® Feeding System's Rotary Gate

The Greatest Advance in Broiler Feeder Technology
Since the Flood Window

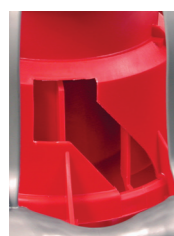


Good-bye Flood Windows Introducing The Rotary Feed Gate

Chore-Time introduced the poultry feeder flood window over 20 years ago. Today, it's a common feature of almost every broiler feeder produced. But, flood windows have some limitations. Most work only when the pan is on the floor. Uneven litter under the pan can make the feed level uneven. And, some models simply jam up with feed, dust and dirt.



The heart of Chore-Time's REVOLUTION® Feeder is an entirely new technology for broiler feeder pans. The Rotary Feed Gate is a simple mechanism based upon two cones: one inside and one outside. The outside cone position stays fixed. Starting birds with the gate position fully open, the inside cone can then be rotated to gradually close the pairs of openings on the two cones.

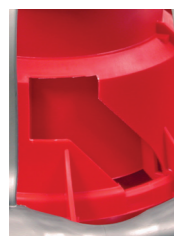


On the Floor or in the Air

Unlike conventional feeder pans, the Rotary Feed Gate does not depend on pan height or gravity to operate. The rotary action allows you to choose the amount of opening and thereby choose the brood feed level ... from very high to very low ... and each step in between!



The Rotary Gate provides an even, complete flooding of the pan during brooding. As birds mature, the flood level can be adjusted progressively, even while the feeders are raised off the floor.

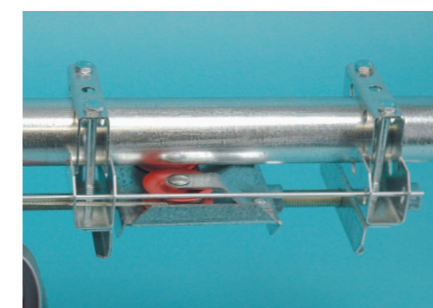


The REVOLUTION® Feeder's unique Rotary Feed Gate permits a wide variety of feed openings for gradual feed level adjustment.



Unsurpassed Control of Feed Level

Set brood feed levels using the Actuator System.
Set final feed level using the easy-to-read grill-top settings.



Control dozens of feeders per actuator ... effortlessly

Chore-Time's ACCUTROL™ Automatic Actuator and ACCU-CLICK™ Manual Actuator each operate up to 96 feeders per unit.

System components include an actuator loop system (consisting of a pair of high-tensile wires and two tension pulleys) and a sliding pivot on top of each REVOLUTION® Feeder. These work together to rotate the inner cones of the feeders and thus adjust the Rotary Feed Gates.

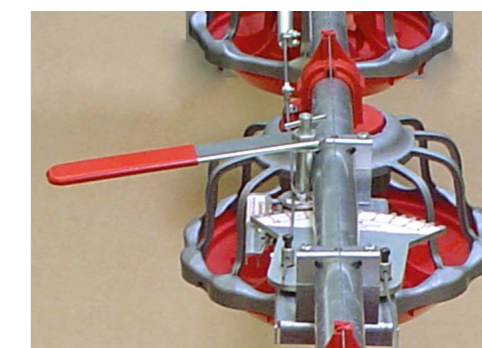
The ACCUTROL™ Automatic Actuator

Try Chore-Time's ACCUTROL™ Automatic Feed Gate Actuator for programmed feeder adjustment using your CHORE-TRONICS® Control. The Control works with a linear actuator to adjust feeders automatically based on preset adjustment times. The automatic system uses a ramped program with 10 steps of change that can be programmed by the user (or a default program may be used). Each step moves the REVOLUTION® Feed Gate for a designated number of seconds.



ACCUTROL™ Actuator Control Unit

Use one ACCUTROL™ Actuator Control Unit for independent control of up to four linear actuators when a manual override is needed for maintenance.



The ACCU-CLICK™ Manual Actuator

Chore-Time's ACCU-CLICK™ Manual Feed Gate Actuator uses a simple rack-and-pinion mechanism and handle to adjust the Feed Gate opening in groups of feeders, with 10 possible steps of change. The system is simple, maintenance-free and ready for upgrade to the ACCUTROL™ Automatic Actuator System.



Feed Level

To set the brood feed level, use the ACCUTROL™ or ACCU-CLICK™ Actuators as described. To set the final feed level, use the six easy-to-read settings at the top of the REVOLUTION® Feeder's grill. These set the distance between the bottom of the feeder's cones and the feeder pan. This determines the final feed level when the Rotary Feed Gate is fully closed.